


EPIS as a Theoretical Framework for Selection and Timing of Implementation Interventions

Danica Knight, Texas Christian University
 Angela Robertson, Mississippi State University
 Gail Wasserman, Columbia University
 Ralph DiClemente, Emory University
 JJ-TRIALS Juvenile Justice Partners

Steven Belenko, Temple University
 Tisha Wiley, National Institute on Drug Abuse
 Carl Leukefeld, University of Kentucky
 Gene Brody, Emory University
 JJ-TRIALS Juvenile Justice Partners

Presented at the
 Addiction Health Services Research Conference
 October 16, 2014
 Boston, MA




JJ-Trials funded at the National Institute on Drug Abuse by the National Institutes of Health

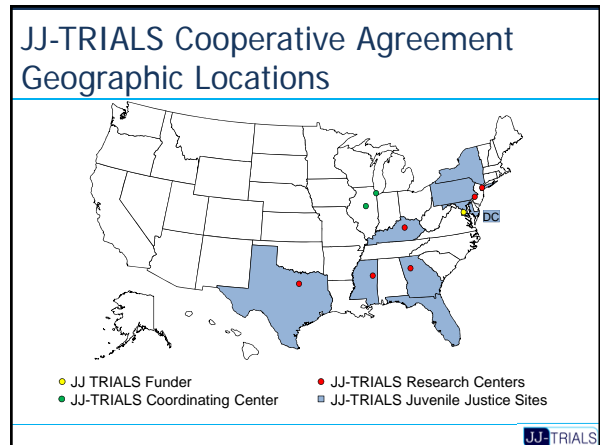
Acknowledgement

This study was funded under the JJ-TRIALS cooperative agreement, funded at the National Institute on Drug Abuse (NIDA) by the National Institutes of Health (NIH). The authors gratefully acknowledge the collaborative contributions of NIDA and support from the following grant awards: **Chestnut Health Systems** (U01DA03622); **Columbia University** (U01DA036226); **Emory University** (U01DA036233); **Mississippi State University** (U01DA036176); **Temple University** (U01DA036225); **Texas Christian University** (U01DA036224); and **University of Kentucky** (U01DA036158).

The contents of this publication are solely the responsibility of the authors and do not necessarily represent the official views of the NIDA, NIH, or the participating universities or juvenile justice systems.


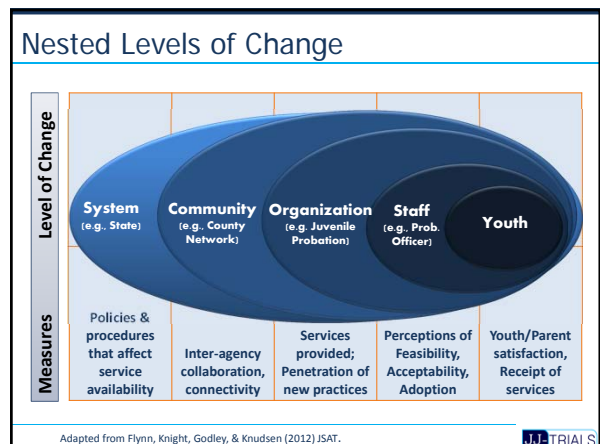


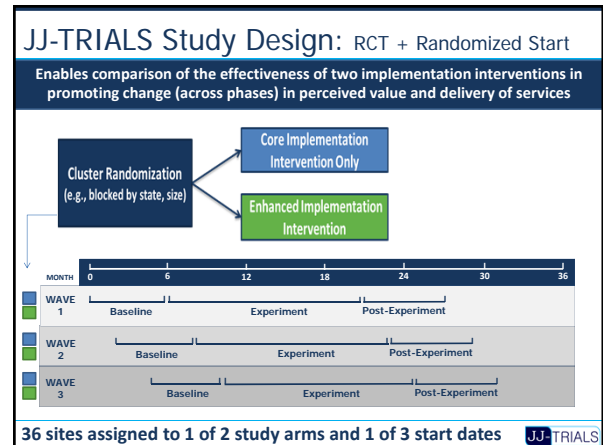
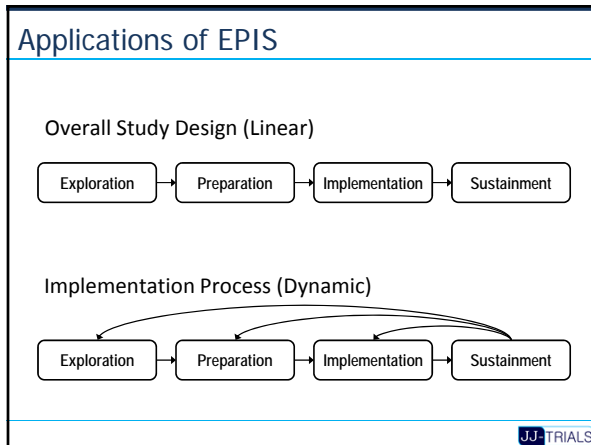
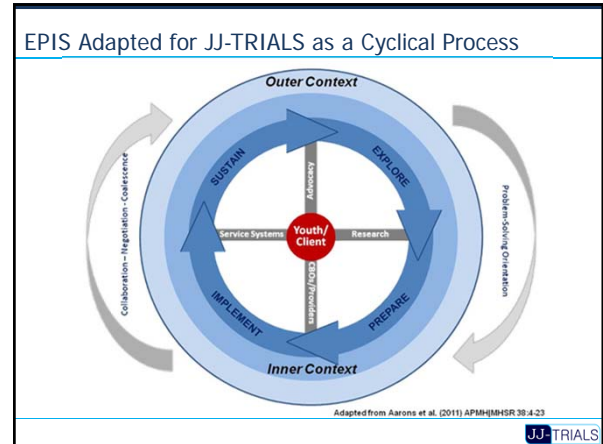
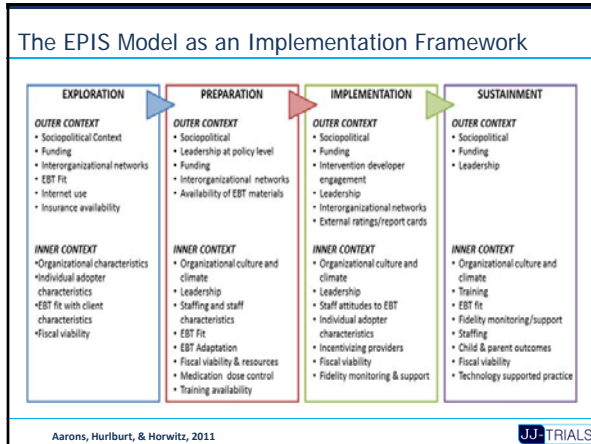
Institution	Principal Investigator(s)	Juvenile Justice Partners
National Institute on Drug Abuse (Funder)	Tisha Wiley, Ph. D. (Science Officer) Dionne Jones, Ph.D. (PO) Shoshana Kahana, Ph.D. (PO)	
George Mason University	Faye Taxman, Ph.D. (Steering Committee Chair)	
Chestnut Health Systems (Coordinating Center)	Michael Dennis, Ph.D. Christy Scott, Ph.D.	
Columbia University	Gail Wasserman, Ph.D.	New York State Office of Probation and Correctional Alternatives; Patti Donohue
Emory University	Ralph DiClemente, Ph.D. Gene Brody, Ph.D.	Georgia Department of Juvenile Justice; Michelle Staples-Horne, Margaret Cawood
Mississippi State University	Angela Robertson, Ph.D.	Mississippi Division of Youth Services-Juvenile Drug Courts; James Maccarone
Temple University	Steve Belenko, Ph.D.	Florida Department of Juvenile Justice (Judy Roysden); Washington, DC Dept of Youth and Rehabilitation Services; County Probation Depts in Pennsylvania
Texas Christian University	Danica Knight, Ph.D.	TX Juvenile Justice Department; Nancy Arrigona
University of Kentucky	Carl Leukefeld, Ph.D.	KY Department of Juvenile Justice; Veronica Koontz



JJ-TRIALS Primary Study

- What we know...
- Over 1/3 of juveniles in the justice system have substance use disorders (Wasserman, et al., 2010)
- Drug use and other forms of illegal activity are closely linked (Belenko & Logan, 2003; Harzke, et al, 2011)
- A number of evidence-based practices exist for substance use screening, assessment, and treatment (see OJJDP, NREPP, NIDA, TCU websites)
- Best practices often don't reach youth who need them (Belenko & Dembo, 2003; Knudsen, 2009)



Intervention Activities within EPIS Phases

		EPIS Phase			
		Exploration	Preparation	Implementation	Sustainment
Core Intervention Bundle (All Sites)	Education & Training	*Behavioral Health Training	*No activities	*No activities	*No activities
	Quality Improvement Strategies	*Skills-based Data-Driven Decision Making (DDDM) Training *Needs Assessment *Site Feedback Report *Assisted Goal Selection *DDDM Tools	*Independent Application of Templates and Tools *Monthly Site Check-ins	*Independent Application of Templates and Tools *Monthly Site Check-ins	*No activities
Enhanced Intervention Bundle (Half of Sites)	Facilitation of DDDM	*No additional activities	*Assist Sites in Use of DDDM in Developing Action Plans	*Assist Sites in Use of DDDM in Progress Monitoring	*No activities
	Facilitation of Local Change Teams (LCT)	*No additional activities	*Assist Sites in Developing LCT *Guide and Monitor LCT Planning Activities	*Guide and Monitor LCT Progress *Transition Leadership of LCT to Site Leader	*No activities
		~= 4-5 months	= 1 year		= 6 months

JJ-TRIALS Research Questions

Primary Questions address whether DDDM strategies and facilitation of DDDM tools/implementation teams improve

- Receipt and quality of substance use services along a behavioral health services cascade (screening, assessment, referral, and treatment)
- Perceived value and use of best practices among staff working with justice-involved youth

Exploratory Questions focus on aspects of

- Implementation process
- Inter-organizational collaboration
- Costs associated with each study arm
- Youth recidivism

Using EPIS as a Framework for JJ-TRIALS

- Examination of change in services over time and sustainment of practices after the intervention ends
- Applicability of EPIS in guiding general process improvement (not just one specific evidence-based practice)
- Intervention and measurement aimed at multiple levels within the system (e.g., community, organization, staff)
- Exploration of cyclical activity that occurs during process improvement efforts
- Innovations in measurement of service (cascade) and process outcomes

JJ-TRIALS

Future Directions

- Work is underway to develop specific intervention and measurement components
- Piloting will begin January 2015 and Wave 1 data collection scheduled for April 2015

JJ-TRIALS

Future Directions

- Currently collecting pilot services Cascade data in “dry runs”
- Needs Assessments at each site will populate Cascade with local data
- Site Feedback Report will display Cascade data for local site
- We will help sites select specific goals to reduce gaps at particular points in the Cascade
- Sites will be trained to routinely collect and monitor Cascade data related to their specific process improvement goals

JJ-TRIALS

References—EPIS Model

- Aarons, G.A., Hurlburt, M. & Horwitz, S.M. (2011). Advancing a Conceptual Model of Evidence-Based Practice Implementation in Public Service Sectors. *Administration and Policy in Mental Health and Mental Health Services Research*, 38, 4-23.
- Aarons, G.A., et al. 2012. Dynamic adaptation process to implement an evidence-based child maltreatment intervention. *Implementation Science*, 7:32. <http://www.biomedcentral.com/>
- Brown CH, Wyman PA, Guo J, Peña J. (2006). Dynamic wait-listed designs for randomized trials: new designs for prevention of youth suicide. *Clinical Trials*, 3(3), 259-271.
- Brown, C. & Lifford, R. (2006). The stepped wedge trial design: A systematic review. *BMC Medical Research Methodology*, 6, 54, doi:10.1186/1471-2288-6-54content/pdf/1748-5908-7-32.pdf
- Flynn, P. M., Knight, D. K., Godley, M. D., & Knudsen, H. K. (Guest Eds.). (2012). Organizational dynamics within substance abuse treatment. Special Issue: *Journal of Substance Abuse Treatment*, 42(2), 109-230.

JJ-TRIALS