

IMPROVING IMPLEMENTATION OF BEST PRACTICES IN CORRECTIONAL SETTINGS: AN OVERVIEW OF CONCEPTUALIZATION, DESIGN, AND MEASUREMENT

## JJ-TRIALS TEXAS PRE-LAUNCH CONSIDERATIONS

DANICA K. KNIGHT, PH.D.  
 TEXAS CHRISTIAN UNIVERSITY

ACADEMIC & HEALTH POLICY CONFERENCE ON CORRECTIONAL HEALTH, HOUSTON, TX  
 MARCH 20, 2014

### TRANSLATIONAL RESEARCH ON INTERVENTIONS FOR ADOLESCENTS IN THE LEGAL SYSTEM (JJ-TRIALS)

**Funding:** National Institute on Drug Abuse

**Research Centers:**

Columbia University	Gail Wasserman, PI
Emory University	Ralph DiClemente, PI
	Gene Brody, PI
Mississippi State	Angela Robertson, PI
Temple	Steven Belenko, PI
Texas Christian Univ	Danica Knight, PI
Univ of Kentucky	Carl Lukefeld, PI

**Coordinating Center:**

Chestnut Health Systems	Michael Dennis, PI
	Chris Scott, PI

### TRANSLATIONAL RESEARCH ON INTERVENTIONS FOR ADOLESCENTS IN THE LEGAL SYSTEM (JJ-TRIALS)

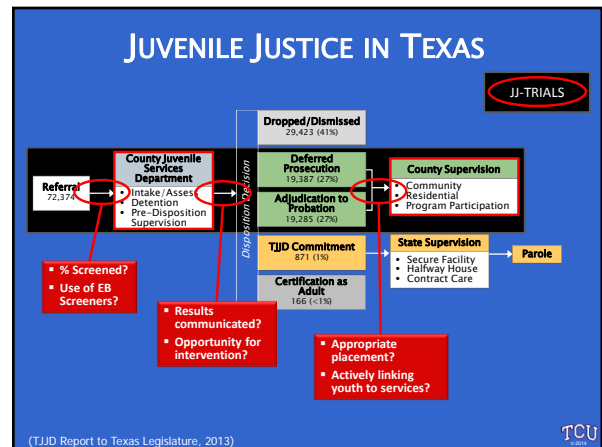
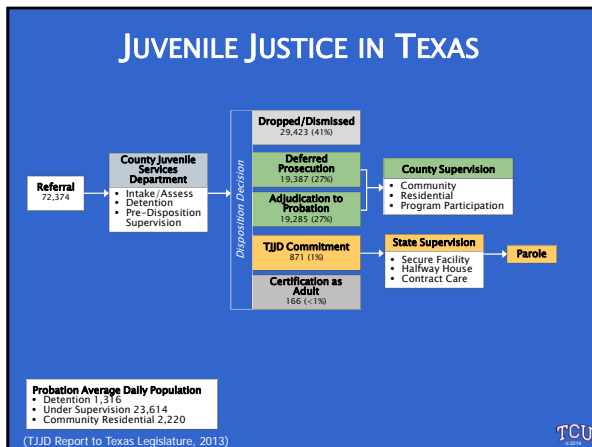
Implement a continuum of evidence-based substance abuse and HIV prevention and treatment services for youth under community supervision.

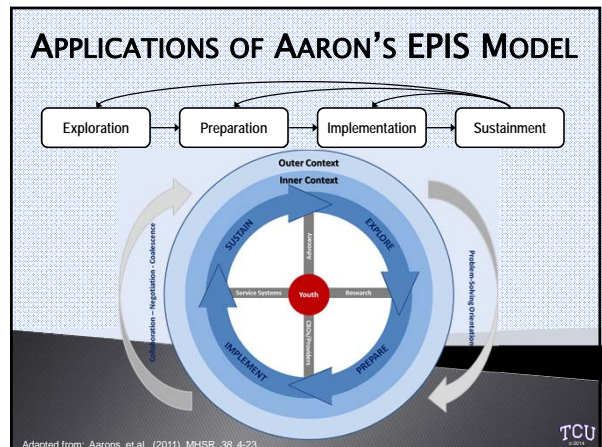
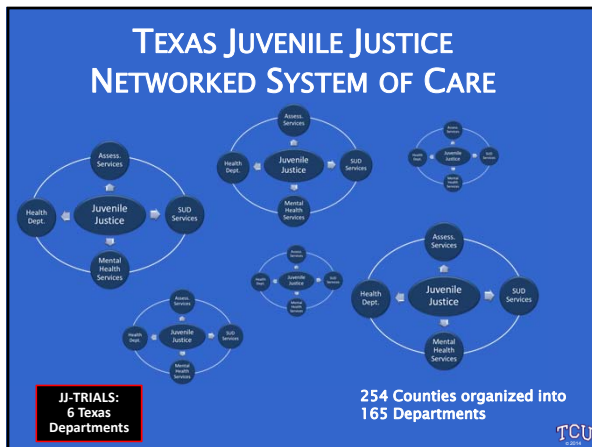
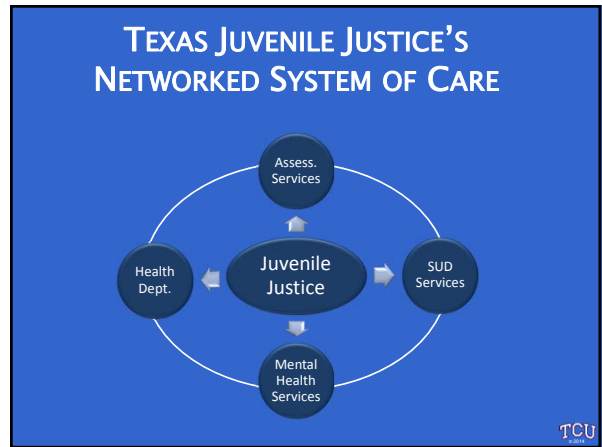
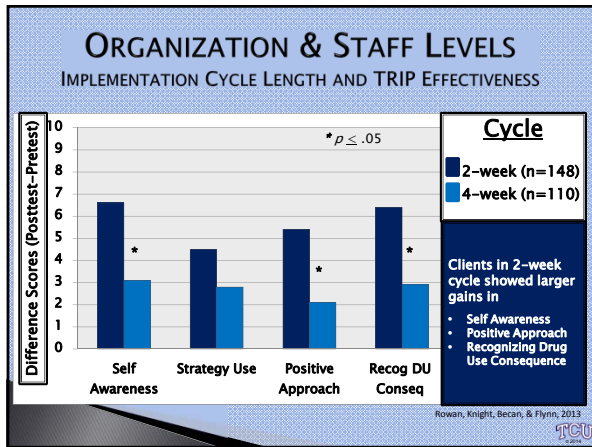
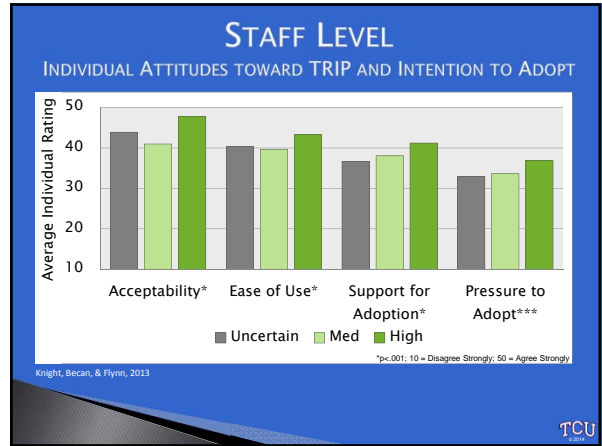
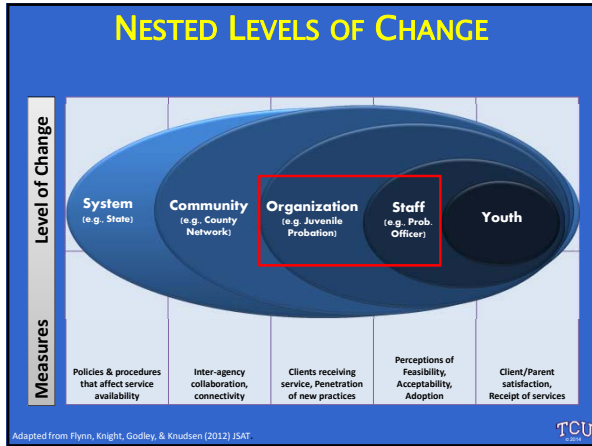
- Screening and assessment
- Use of screening/assessment to inform service linkage
- Active linkage strategies
- Initiation/engagement in treatment services

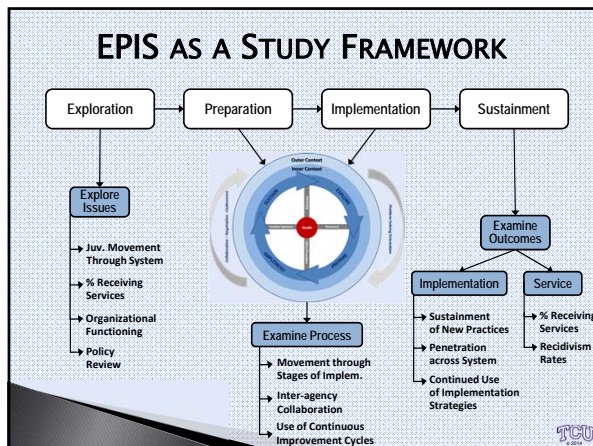
### TCU PARTNER: TEXAS DEPARTMENT OF JUVENILE JUSTICE

The mission of the Texas Juvenile Justice Department is to create a safer Texas through the establishment of a continuum of services that promotes positive youth outcomes

(tjjd.texas.gov; accessed March 10, 2014)







### NEXT STEPS

- Where do gaps in services exist for juveniles in Texas?
- What strategies can effectively promote improvement in screening, assessment, and referral to substance use treatment?
- What is the role of the network in promoting change?
- What is the role of the organization in promoting change?

TCU logo in the bottom right corner.