



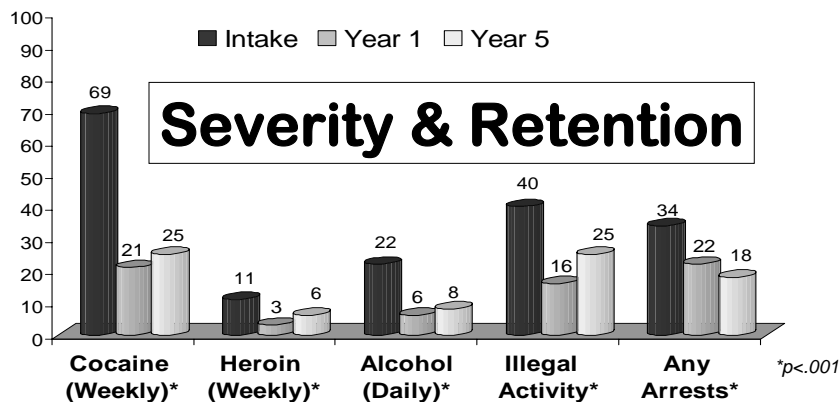
"Promoting Organizational Functioning & Change"
23rd WFTC World Conference 2006
(September 2, 2006; New York City)

Planning and Managing Change for Clients and Organizations

D. Dwayne Simpson
TCU Institute of Behavioral Research
Fort Worth, Texas

1

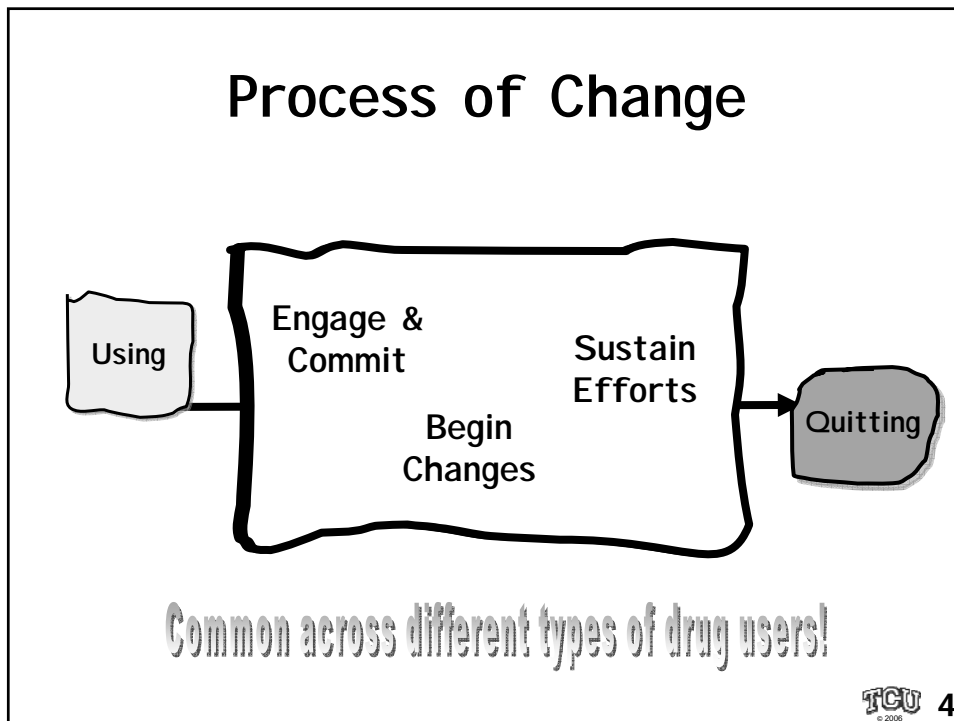
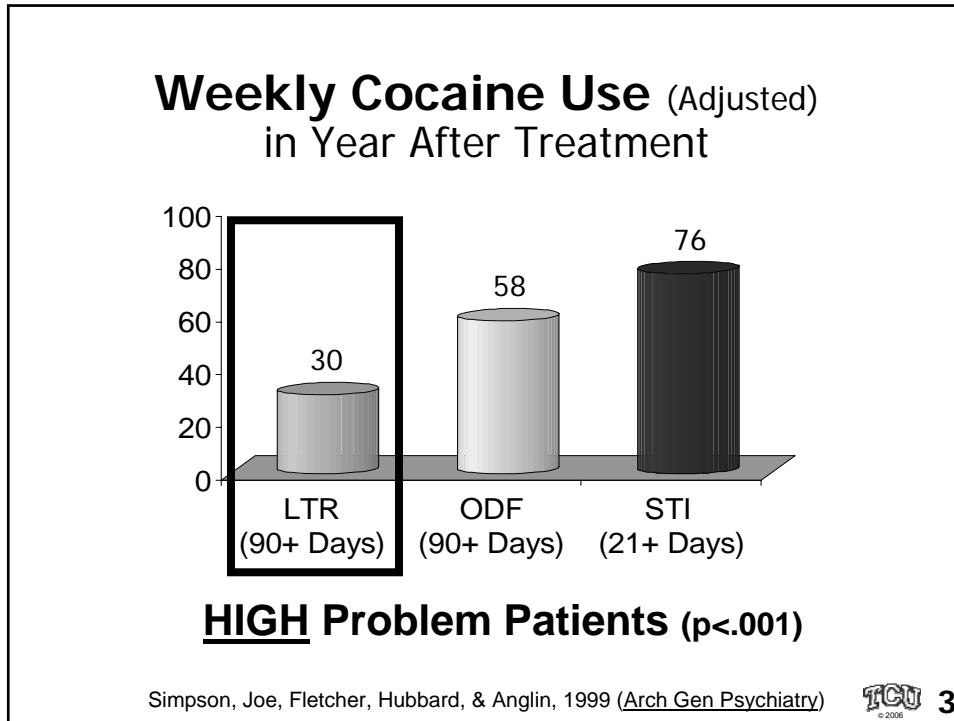
Outcomes for Cocaine Users (DATOS) % Changes from Before to After Treatment (n=708)



Simpson, Joe, & Broome, 2001 (*Arch Gen Psychiatry*)



2

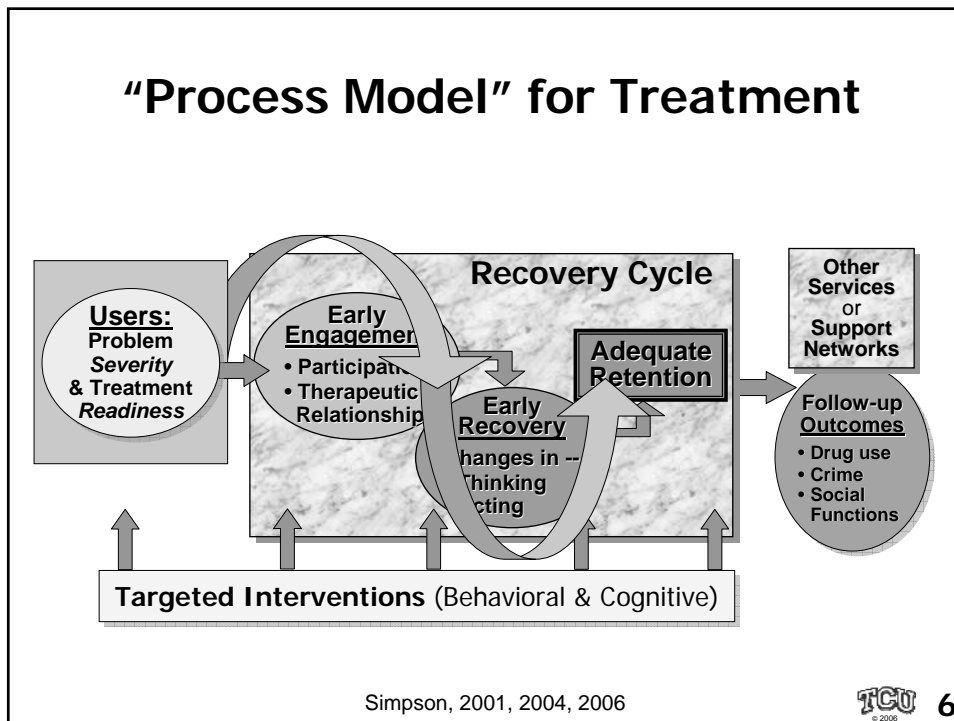


Major Needs by Treatment Staff

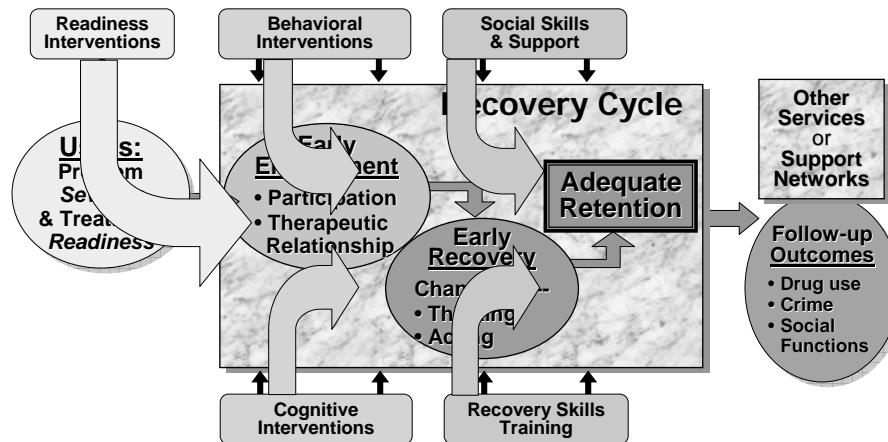
(from PTN staff surveys; n~600)

<p><u>Program Services (>75%)</u></p> <ul style="list-style-type: none"> ◆ Info on <u>new medications</u> ◆ <u>Dual diagnosis & services</u> ◆ <u>Brief assessments of needs & performance</u> ◆ Improving <u>social support networks</u> ◆ <u>Conceptual model of treatment process</u> 	<p><u>Counselor Training (>70%)</u></p> <p><i>Techniques for client –</i></p> <ul style="list-style-type: none"> ◆ <u>Participation in trt</u> ◆ <u>Thinking skills</u> ◆ <u>Problem-solving skills</u> ◆ <u>Cognitive focus</u> <p><i>Resources on <u>Internet</u></i> <i>Info sharing <u>between programs</u> (>90%)</i></p>
---	--

Rowan-Szal et al. (in review) TCU 5
© 2006



Selection of Targeted Interventions



Simpson, 2001, 2004, 2006

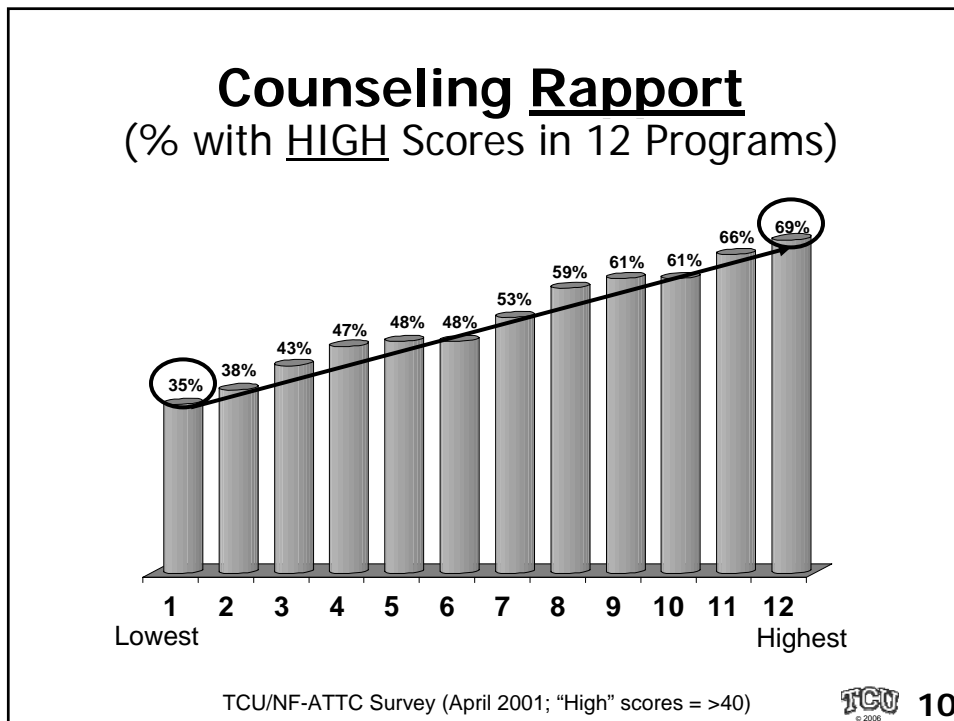
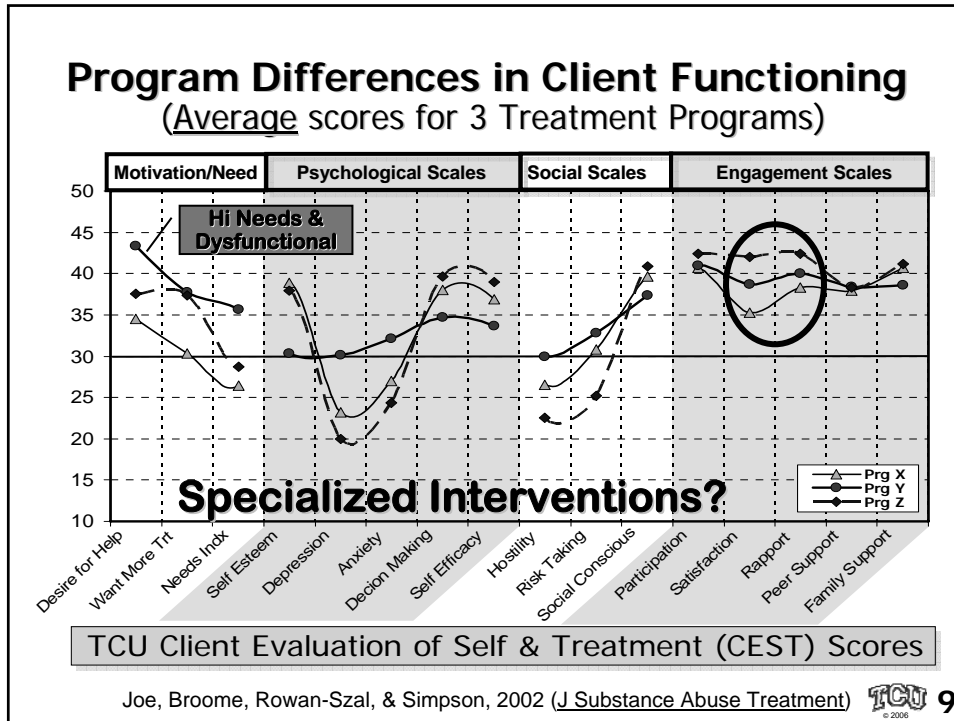


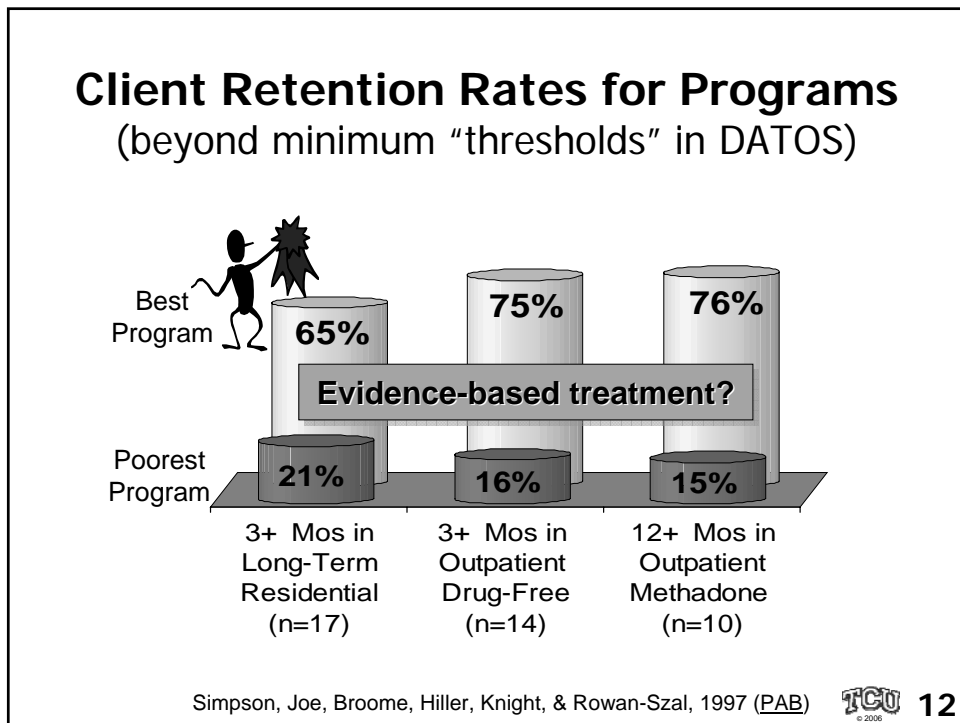
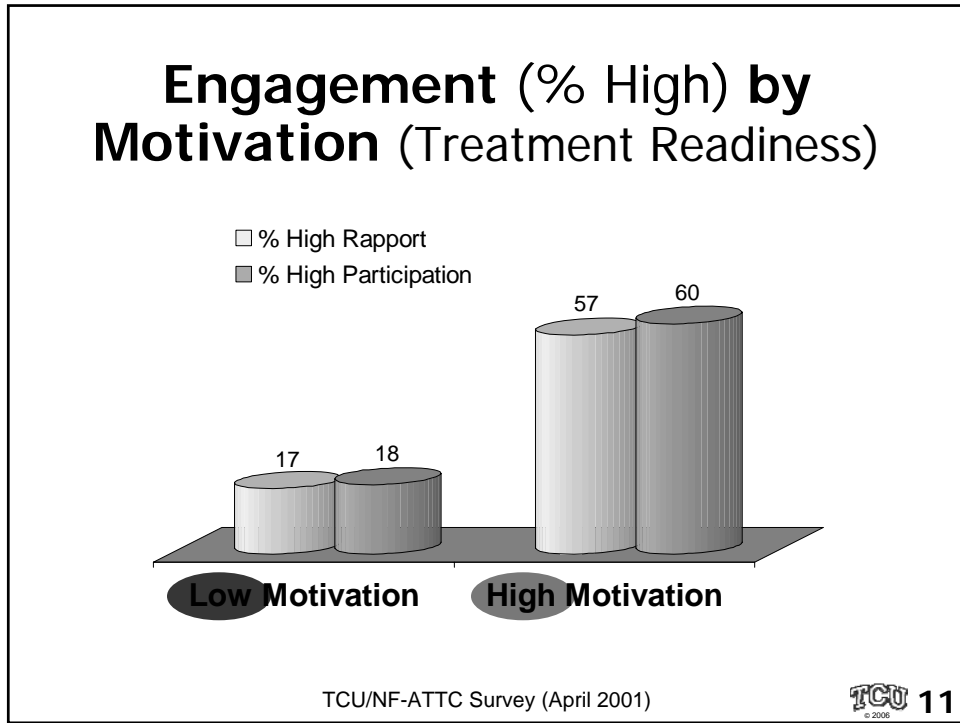
TCU Brief Intervention Manuals

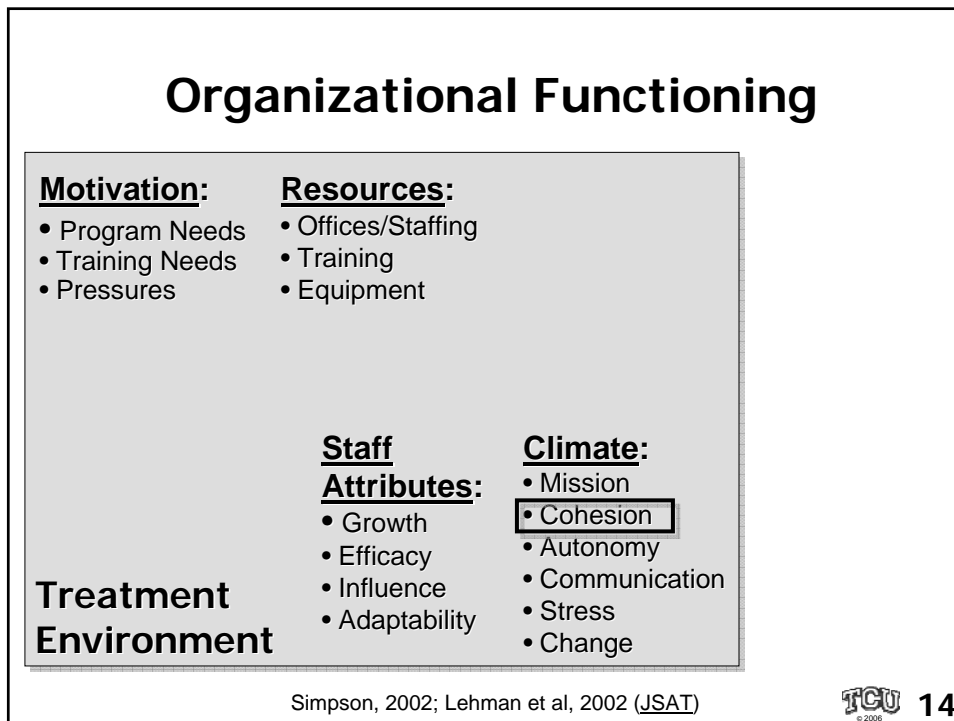
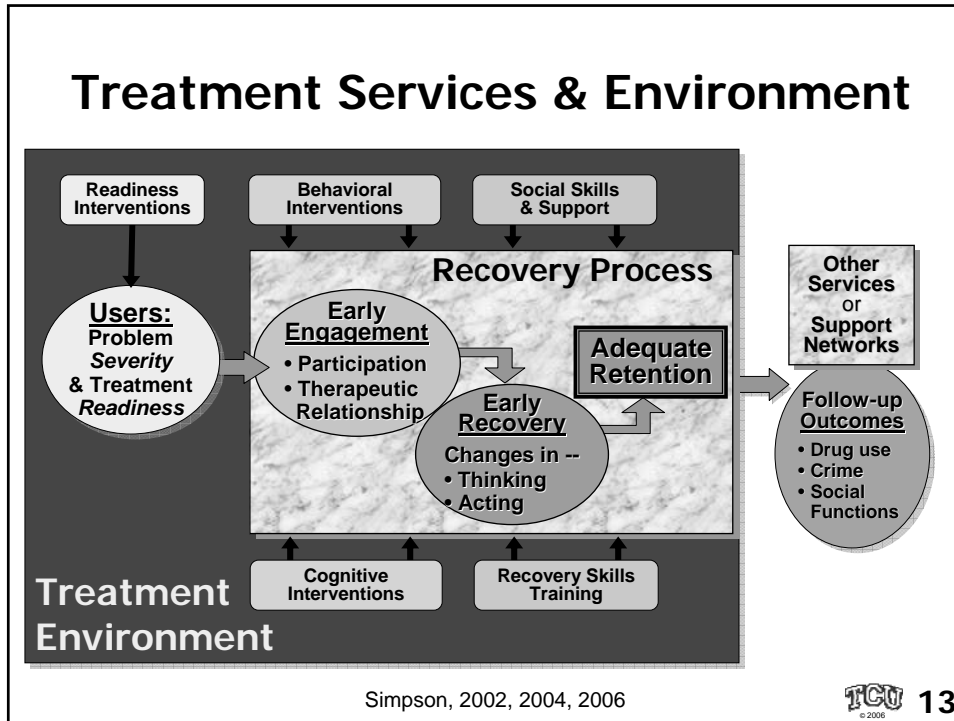
- ✓ M for Motivation
- ✓ Reducing Angry Feelings
- ✓ Criminal Thinking
- ✓ Better Communication
- ✓ Building Social Networks
- ✓ HIV Prevention & Sexual Health
- ✓ Contingency Management Strategies
- ✓ Cognitive-Mapping Guidebook

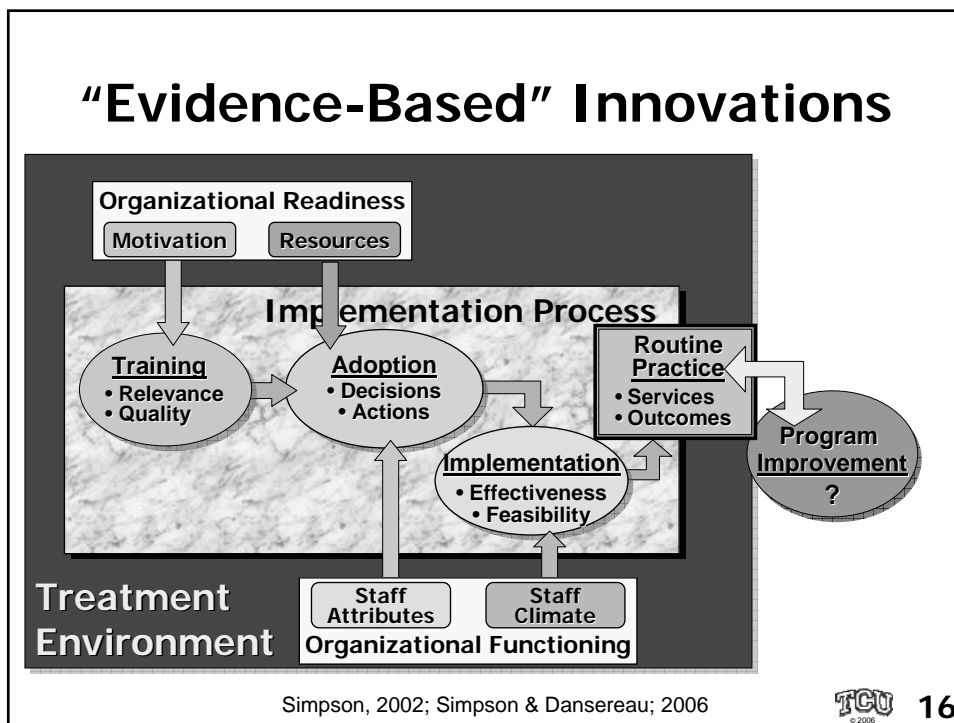
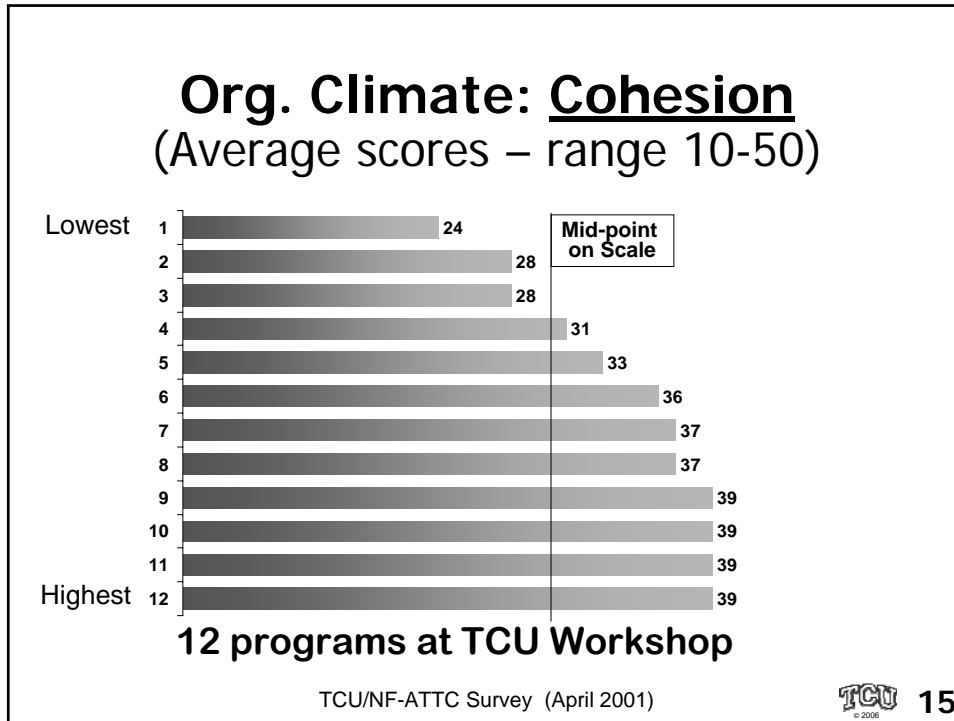
www.ibr.tcu.edu











Institute of Behavioral Research at Texas Christian University



IBR HOME PAGE

- [WHAT'S NEW](#)
- [ABOUT IBR](#)
- [RESOURCE COLLECTIONS](#)
- [STAFF](#)
- [PROJECTS](#)
- [NEWSLETTERS](#)
- [PUBLICATIONS](#)
- [PRESENTATIONS](#)
- [MANUALS](#)
- [FORMS](#)
- [OTHER LINKS](#)

SITE GUIDES:

- [Search](#)
- [Contents](#)
- [Site map](#)

Resource Collections

- [Overview](#)
- [National Evaluations](#)
- [Correctional Evaluations](#)
- [Treatment Process](#)
- [Counseling Manuals](#)
- [Cognitive Interventions](#)
- [Organizational Functioning](#)
- [Assessment Systems](#)
- [Assessment Fact Sheets](#)

**A National Research Center
for addiction treatment studies
in community and correctional settings**

- **TCU Treatment System Overviews**
Conceptual Models
Intervention Manuals
Assessment Instruments
- **Research Status Reports on –**
Treatment Planning
Client/Program Monitoring
Organizational Functioning
CJ-Based Tx Systems
Tx Cost Calculations
- **New Publications (Abstracts),
Presentations, & Newsletters**

www.ibr.tcu.edu



Selected Presentations



DATOS
TCU 17
© 2006

Short-Cut Link to TCU/IBR Resources:

www.ibr.tcu.edu/info/wftc.html

 *Reprints of selected magazine publications*

- Simpson (2006). **A plan for planning treatment.**
Counselor: A Magazine for Professionals, 7(4), 20-28.
- Simpson & Dansereau (2006). **Assessing organizational functioning as a step toward change.**
Science & Practice Perspectives, ...

- ✓ *Download of WFTC Presentation (PDF or PPT)*
- ✓ *Information on National Treatment Evaluations (DATOS)*
- ✓ *Guide to TCU treatment assessments & manuals (free)*

TCU 18
© 2006