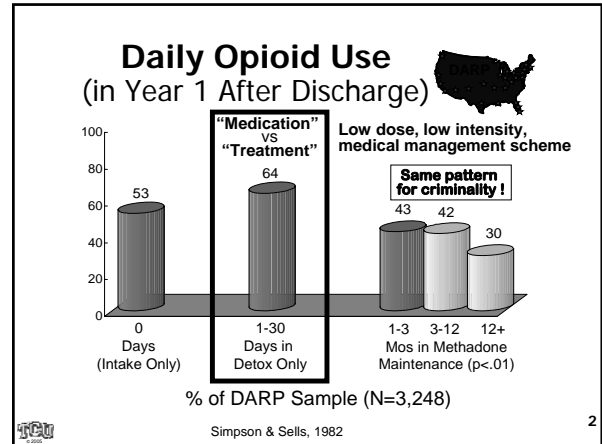


Building Bridges for Treatment Effectiveness

Psychosocial Interventions & Assessments for Improving Treatment Engagement & Retention

D. Dwayne Simpson
TCU Institute of Behavioral Research

1

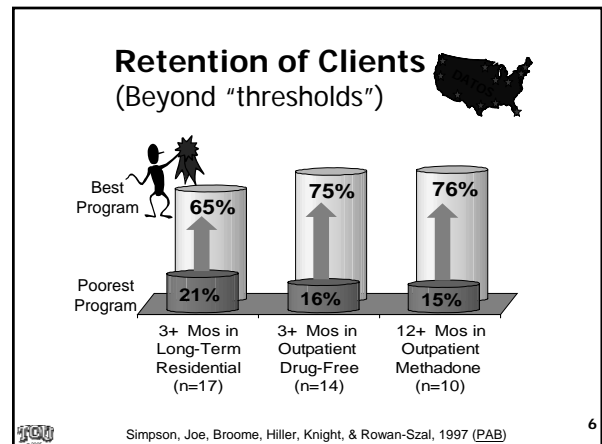
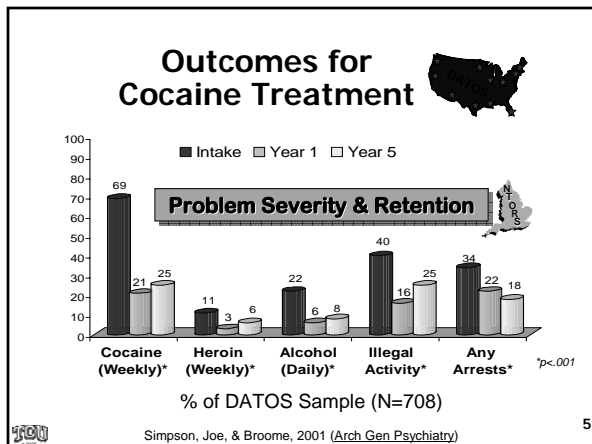
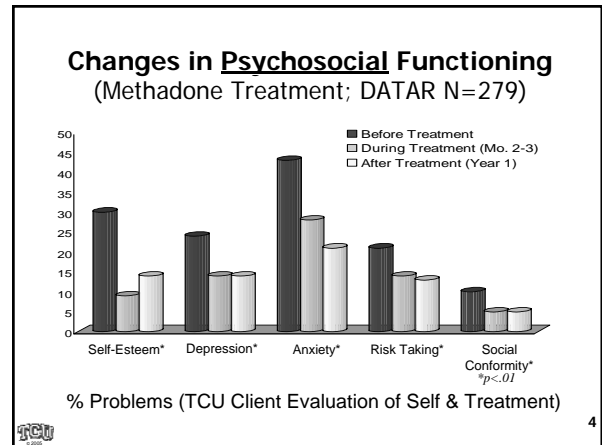


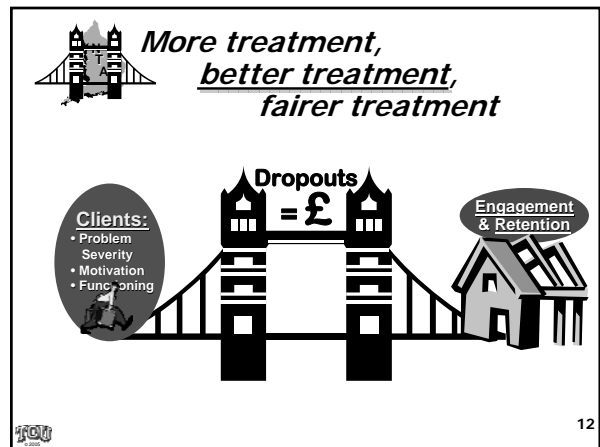
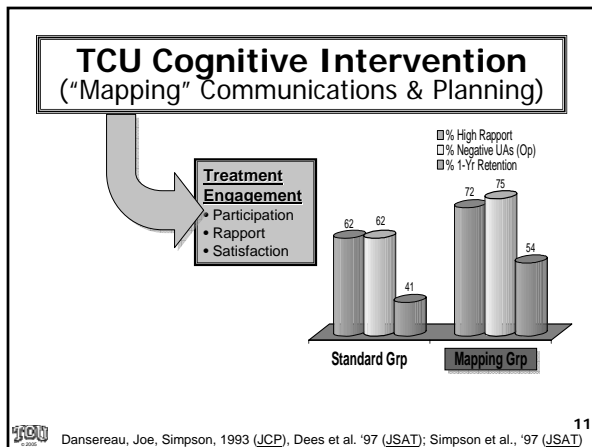
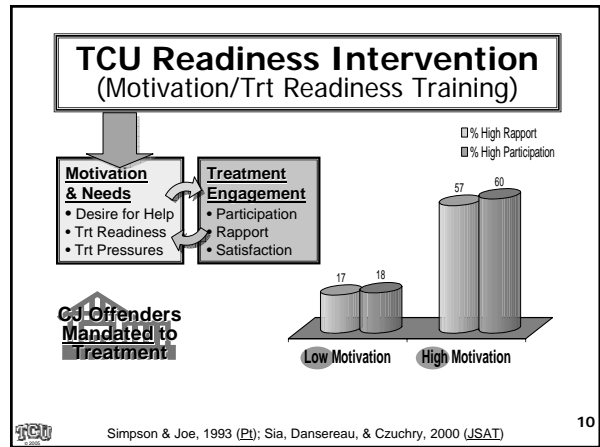
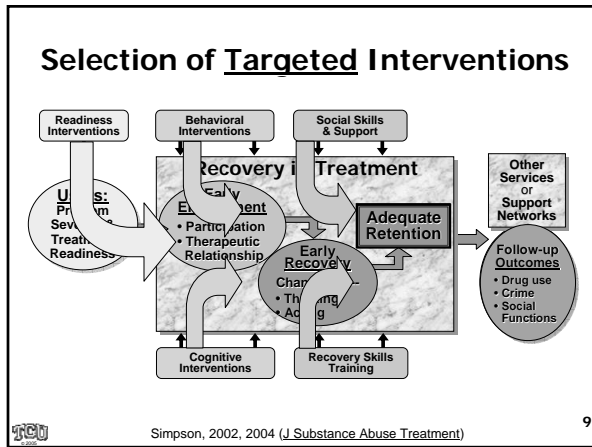
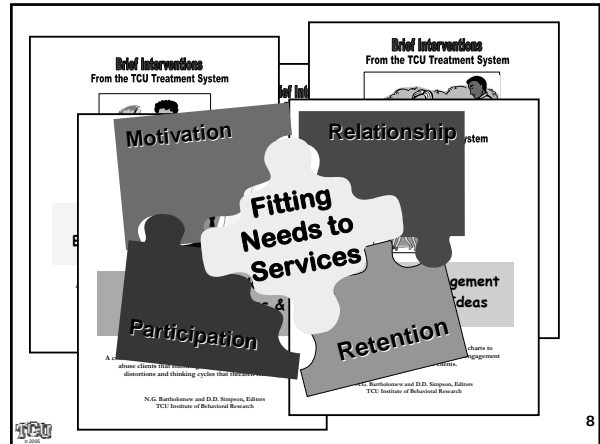
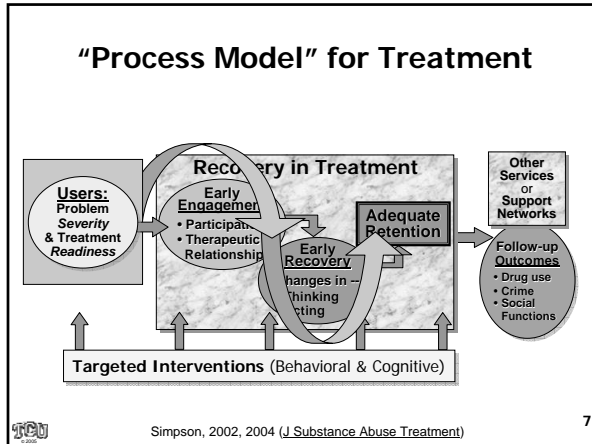
"Treatment Process" in 21 MM Programs

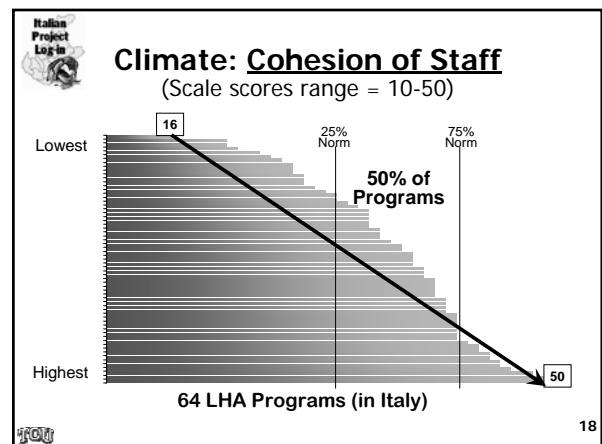
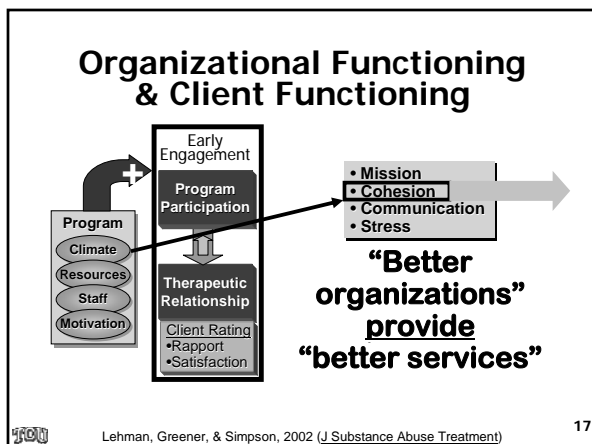
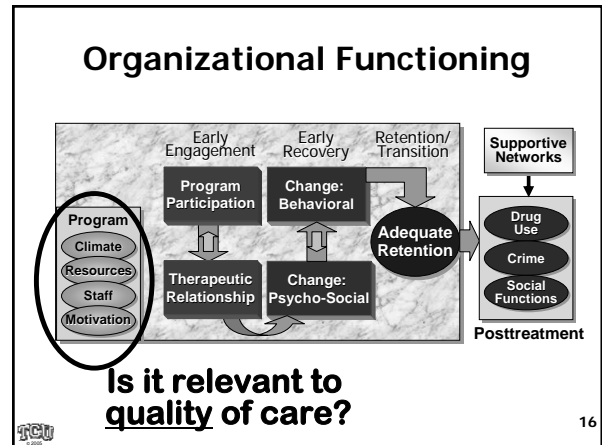
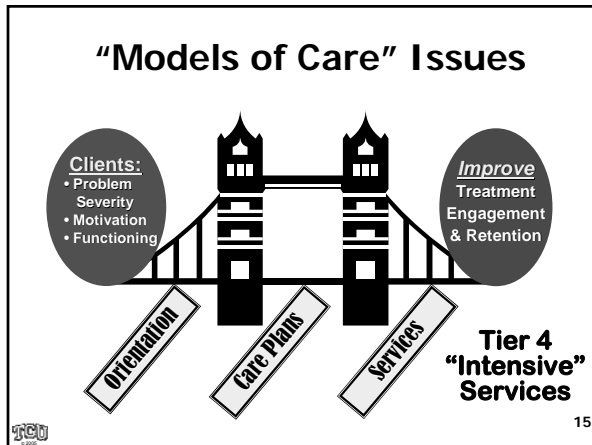
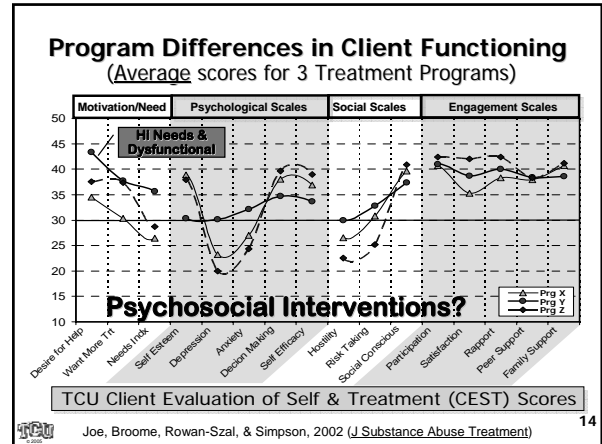
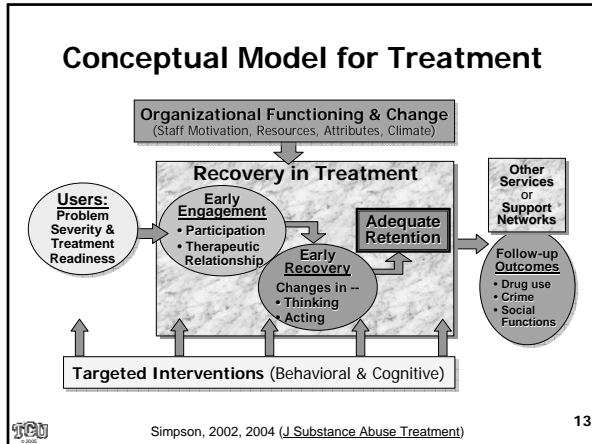
- ❖ Programs with Longer Retention had -
 - Better assessment & program planning
 - Higher MM dose & better UA monitoring
 - Comprehensive ("wrap-around") services
 - Higher ratings for "meeting client needs"

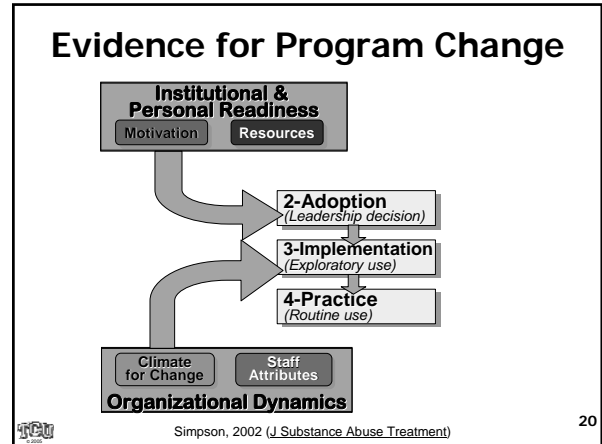
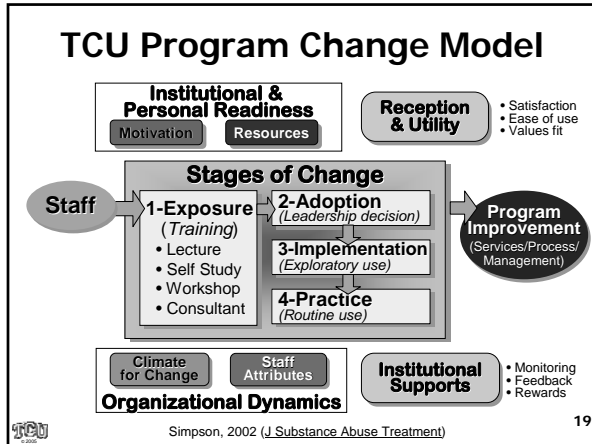
Similar findings for other modalities

3









Institute of Behavioral Research at Texas Christian University

TCU

IBR HOME PAGE

WHAT'S NEW
ABOUT IBR

RESOURCE
COLLECTIONS

STAFF

PROJECTS

NEWSLETTERS

PUBLICATIONS

PRESENTATIONS

MANUALS

FORMS

OTHER LINKS

SITE GUIDES:

Search

Contents

Site map

Selected Presentations

A National Research Center for addiction treatment studies in community and correctional settings

- **TCU Treatment System Overviews**
Conceptual Models
Intervention Manuals
Assessment Instruments
- **Research Status Reports on –**
Treatment Planning
Client/Program Monitoring
Organizational Functioning
CJ-Based Tx Systems
Tx Cost Calculations
- **New Publications (Abstracts), Presentations, & Newsletters**

www.ibr.tcu.edu

Resource Collections

Overview

National Evaluations

Correctional Evaluations

Treatment Process

Counseling Manuals

Cognitive Interventions

Organizational Functioning

Assessment Systems

Assessment Fact Sheets

21