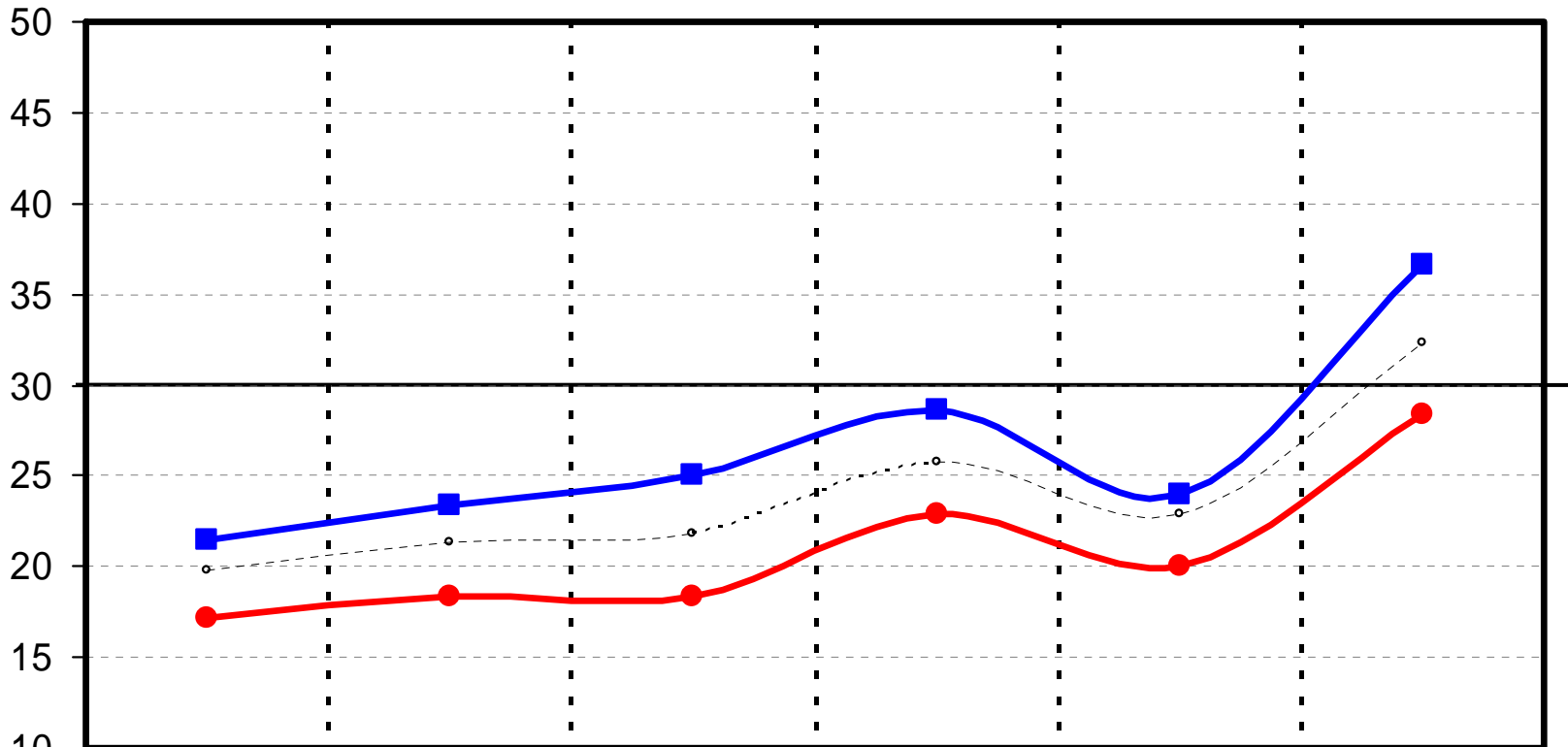


# Means & Norms for Offender Functioning

33rd-67<sup>th</sup> Percentile CTS Score Profiles (N=3,266)



	Entitlement	Justification	Personal Irresponsibility	Power Orientation	Cold Heartedness	Criminal Rationalization
67th %tile	21.43	23.33	25	28.57	24	36.67
33rd %tile	17.14	18.33	18.33	22.86	20	28.33
Mean Scores	19.74	21.3	21.88	25.76	22.93	32.32

TCU Criminal Thinking Scales (CTS)

July 2005 - Copyrighted