

This manual was developed as part of the National Institute on Drug Abuse (NIDA) Grant DA08608, *Cognitive Enhancements for the Treatment of Probationers* (CETOP).

The ***TCU Guide Maps: A Resource for Counselors*** training module and related maps, handouts, and any data collection forms may be used for personal, educational, research, and/or information purposes. Permission is hereby granted to reproduce and distribute copies of these materials (except reprinted passages from copyrighted sources) for nonprofit educational and nonprofit library purposes, provided that copies are distributed at or below costs and that credit for author and source are included on each copy. No material may be copied, downloaded, stored in a retrieval system, or redistributed for any commercial purpose without the express written permission of Texas Christian University.

For more information, contact:

Institute of Behavioral Research
Texas Christian University
P.O. Box 298740
Fort Worth, TX 76129
(817) 257-7226
FAX 257-7290
E-Mail IBR@TCU.EDU
Web site: www.ibr.tcu.edu

January, 2000

Chapter Three

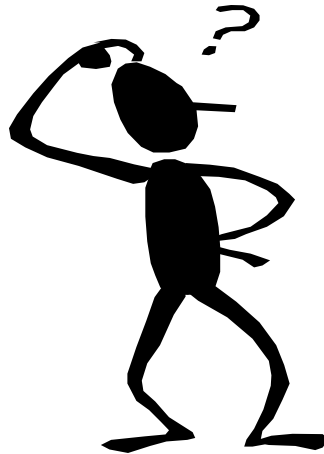
What's a map?

What's a map?

Time: Sometime before or during 3rd group session
Materials: 15 copies of the knowledge map "A Map to Explain Maps" & overhead copy of the map

Dr. C:

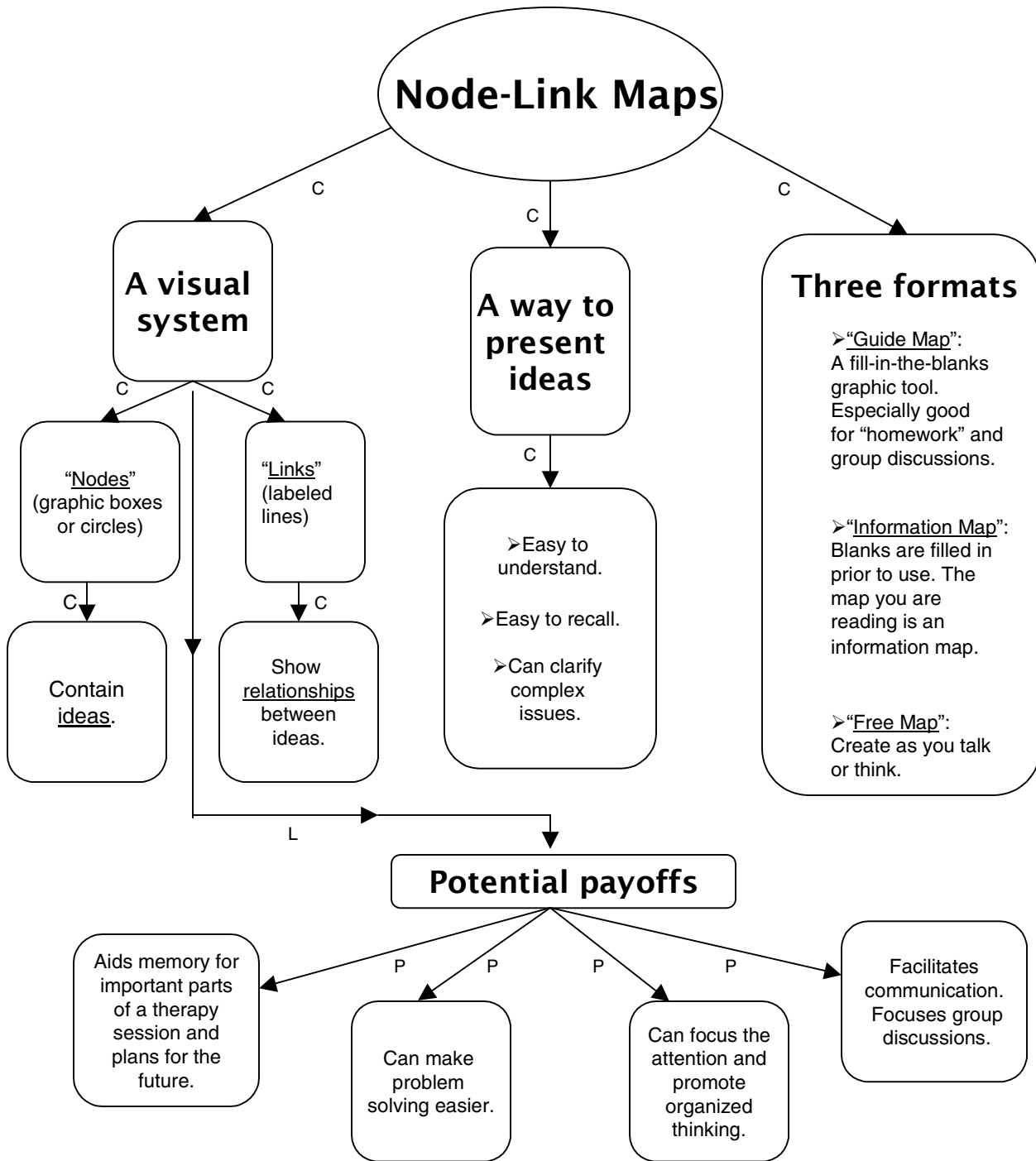
“ I'll be using guide maps a lot with this group, especially at the beginning of our work. As things move along, there will be some short map homework and special assignments for each of you. Since that's my plan, I want you to understand why I use "guide maps" with my groups. I think the best way to explain mapping is with a map. ”



See next page.



“ I use maps to represent ideas visually: these boxes, or "nodes," hold the ideas and the links between them show how they are related. There are lots of reasons for using a map. Ideas presented this way are usually easy to understand, to recall, and can really make some complex ideas --- broken down into parts - a lot simpler. When I use maps in my groups, it seems to focus attention on a topic, keeps the discussion on target and helps all of us understand each other a little better. I think it's a lot easier to see solutions to problems using a map. ”



A map to explain maps!

C = Characteristic
L = Leads to
P = Part