

Strategic Planning Seminar on Evidence-Based Treatment

*U.S. DISTINGUISHED INTERNATIONAL SCIENTIST COLLABORATION AWARD
NATIONAL INSTITUTE ON DRUG ABUSE INTERNATIONAL PROGRAM*

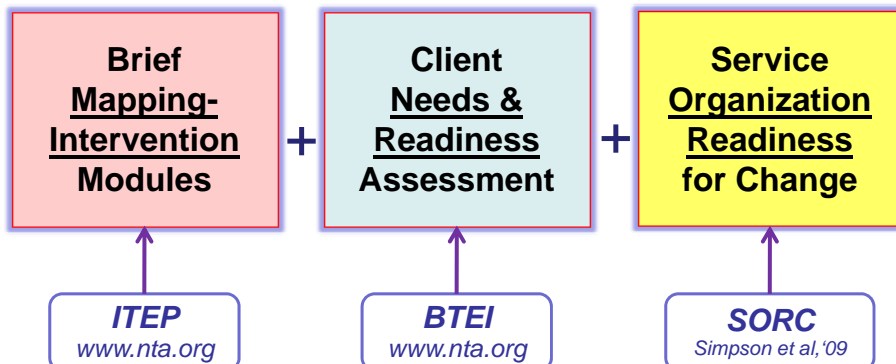
Strategies for Change: Implementing Innovations for Integrated Services

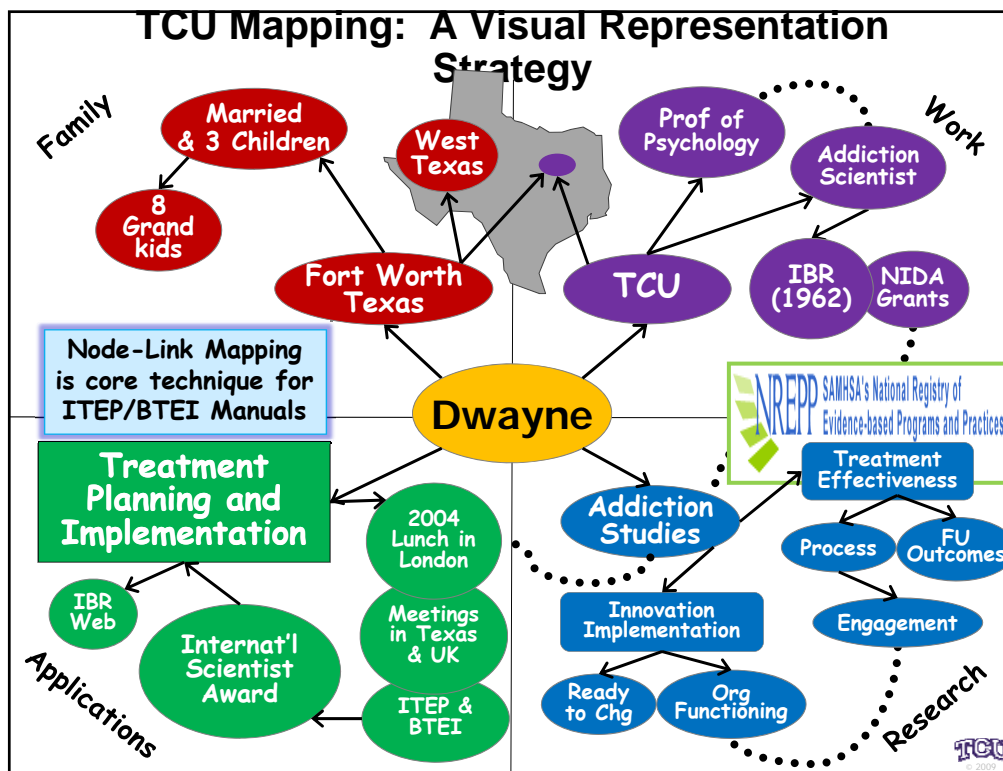
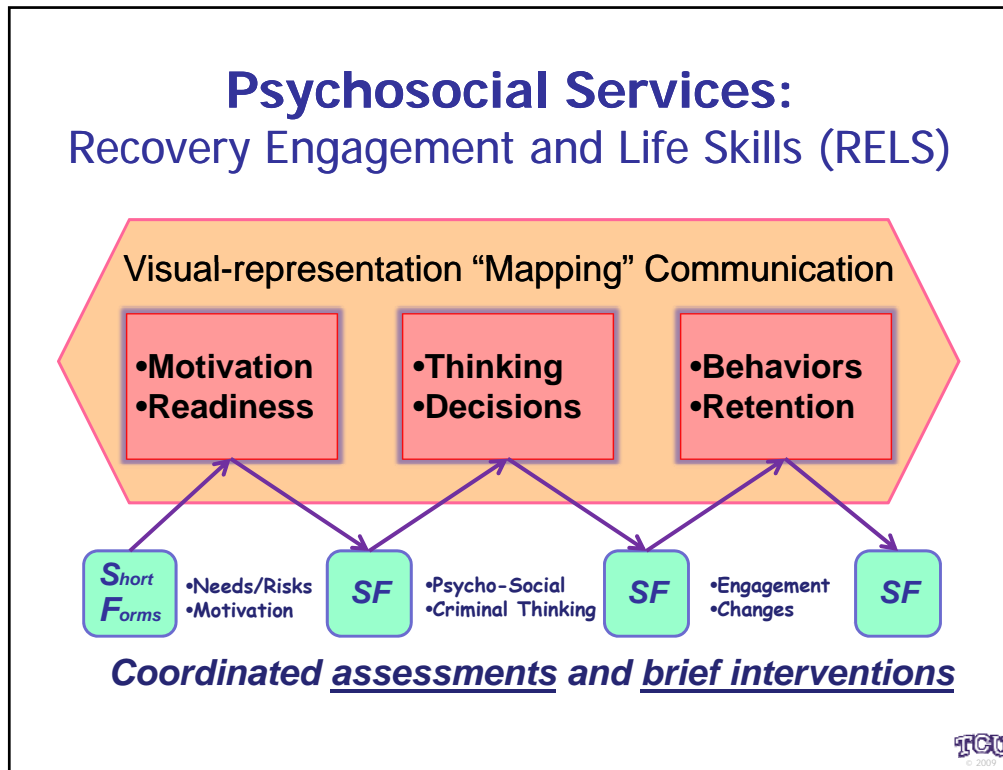
Dwayne Simpson



**What are ITEP and BTEI,
and how are they interrelated?**

Psychosocial Services: Recovery Engagement and Life Skills (RELS)





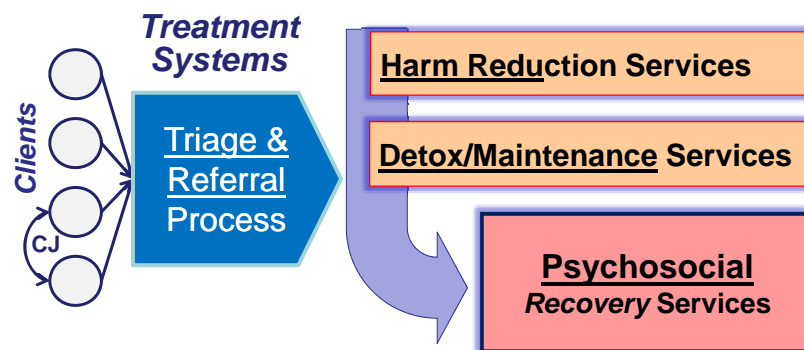
“Tools” from ITEP and BTEI for *Recovery Engagement and Life Skills (RELS)*

1. Conceptual framework for treatment process
2. Assessments of client functioning (*CEST*)
3. Manuals for “mapping” brief interventions:
 - *Motivation/Thinking Interventions (ITEP)*
 - *Care Planning & Exit Planning (BTEI)*
4. Publications growing for “evidence-base”
5. Field network of innovation “early adopters”
6. Implementation principles for organizations



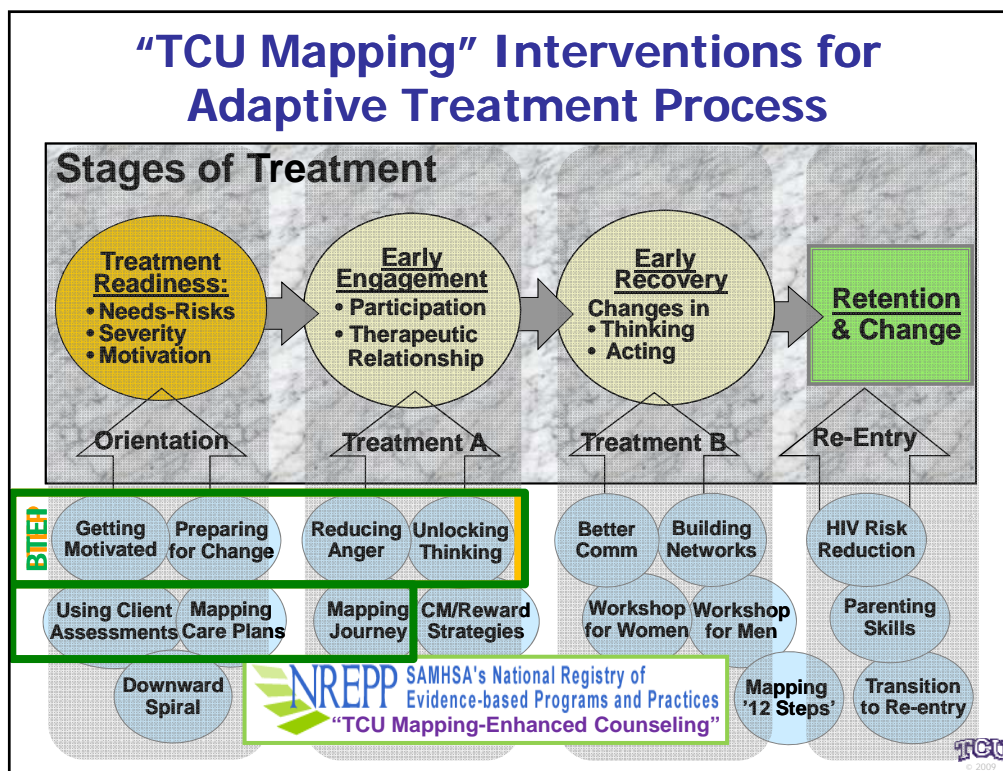
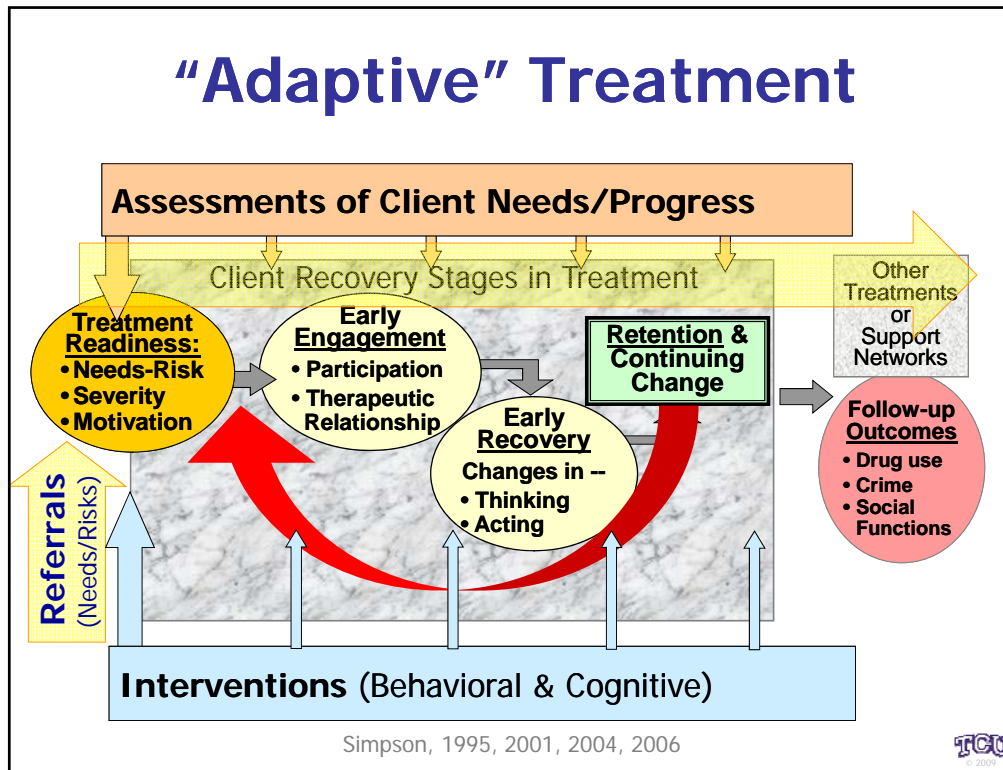
UK Addiction Treatment Services

Services Documentation Data Networks



“We need for more comprehensive strategies to help people who are STUCK in treatment”







Texas Institute of Behavioral Research
 at Texas Christian University

SEARCH

IBR HOME PAGE

[MANUALS](#)

[FORMS](#)

[EVIDENCE](#)

[ABOUT IBR-TCU](#)

[STAFF](#)

[PUBLICATIONS](#)

[PRESENTATIONS](#)

[PROJECTS](#)

[NEWSLETTERS](#)

[OTHER LINKS](#)

[WHAT'S NEW](#)

SITE GUIDES:




**A National Research Center
 for addiction treatment studies
 in community and correctional settings
 (over 600 free resource files available)**

• [Overview of Adaptive Treatment System & Conceptual Models](#)

See Guide for New Visitors

• [Guide to Intervention Manuals](#)

• [Guide to Assessment Forms](#)

• [Project Updates & Summaries](#)

• [Newsletters, Presentations, and Publications \(Abstracts\)](#)

www.ibr.tcu.edu

EVIDENCE

[SUMMARY](#)

[TCU Mapping-Enhanced Counseling](#)

[Treatment Process](#)

[Counseling Manuals](#)

[Corrections-Based Treatment](#)

[National Evaluations](#)


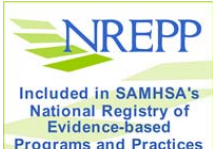
[Organizational Readiness](#)





[Assessment Fact Sheets \(with norms\)](#)



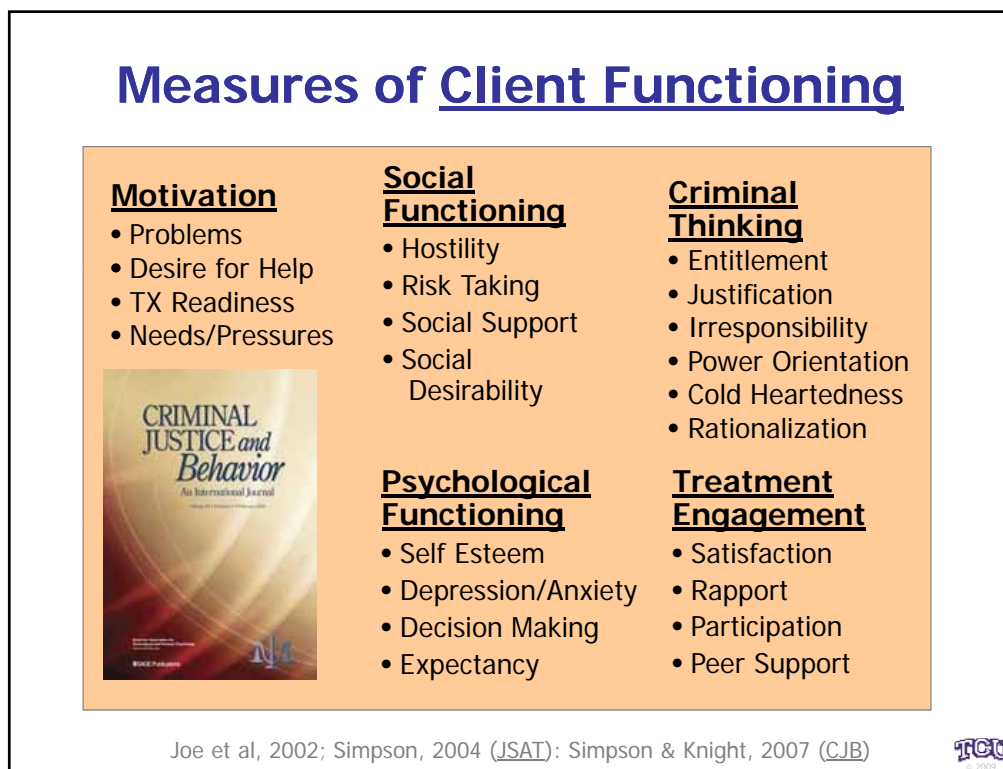
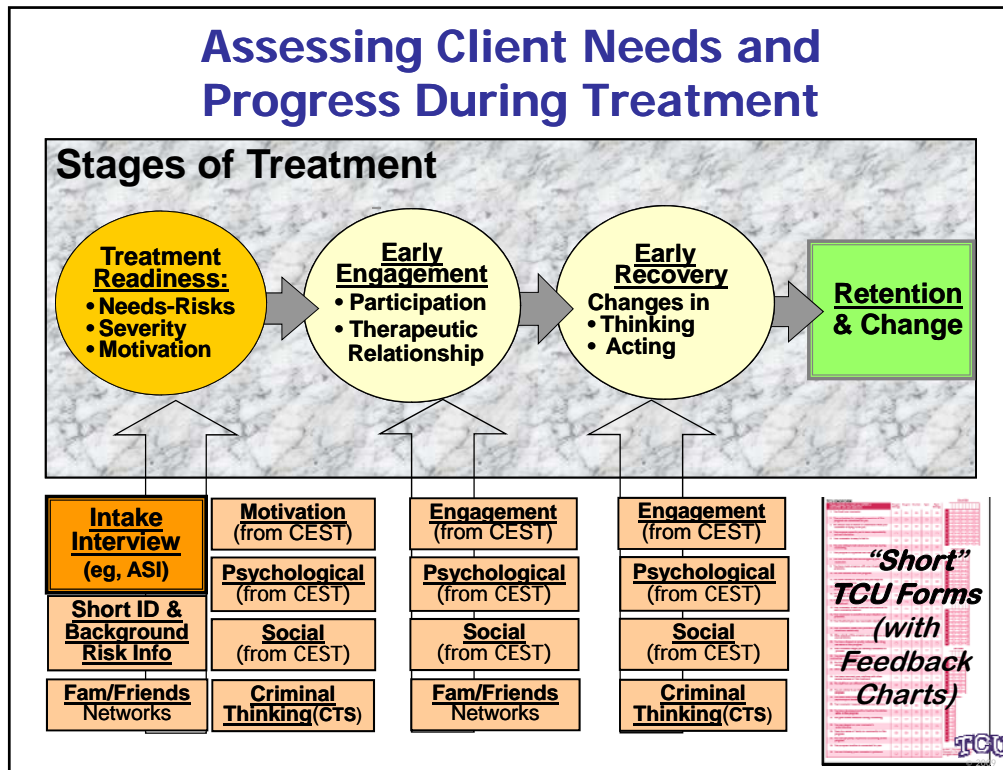
**"Visitors"
 600/day
 30 mins**

Manuals

Manuals (Page 1 of 3) Last updated: May 6, 2009	TCU Treatment Stage		Focal Topic Areas										Specific Population	Can use the manual for?									
Click on intervention title for manual information and link to download.	Individual and Individual into TIC	Improving Engagement in TIC	Improving Early Recovery in TIC	Improving Retention and Recentry	Improving relapse prevention	Contingency management	HEV/ASD/STD	Mapping concepts utilized	Neuroscience	Recovery transition skills (aftercare)	Recent health/relationships	Support networks	Therapist errors	Treatment planning	12-Step facilitation	Workplace/Organizational issues	CJ specific issues included	Men/Women specific	Youth/Adolescent specific	Treatment planning	Psychosocial group therapy	Evidence-based modular applications	Training for clinicians/staff
Mapping-Enhanced Counseling: An Introduction	D	X	X							X													X
Mapping New Roads to Recovery: Cognitive Enhancements to Counseling	D	X	X	X																			X
Mapping Organizational Change: A Guidebook on Program Needs	D				X																		X
Mapping the Journey: A Treatment Guidebook	D	X	X	X	X									X									X
New Mapping Your Recovery Plan: Heading Home	D			X						X													X
Mapping Your Steps: Twelve Step Guide Maps (English and Spanish)	D			X	X									X									X
Mapping Your Treatment Plan: A Collaborative Approach	D	X	X	X	X															X			X
Preparation for Medication: The Lower of Spirits and the Weekly Planner	D		X					X												X	X		X
TAM Guide Maps: A Resource for Counselors	D	X	X	X	X			X												X	X		X
Using Client Assessment to Plan and Monitor Treatment (Using TCU Guide)	D	X	X	X	X			X	X					X						X			X



TCU Short Forms for Client Assessments

A. Client Drug Use and Crime Risk Forms:

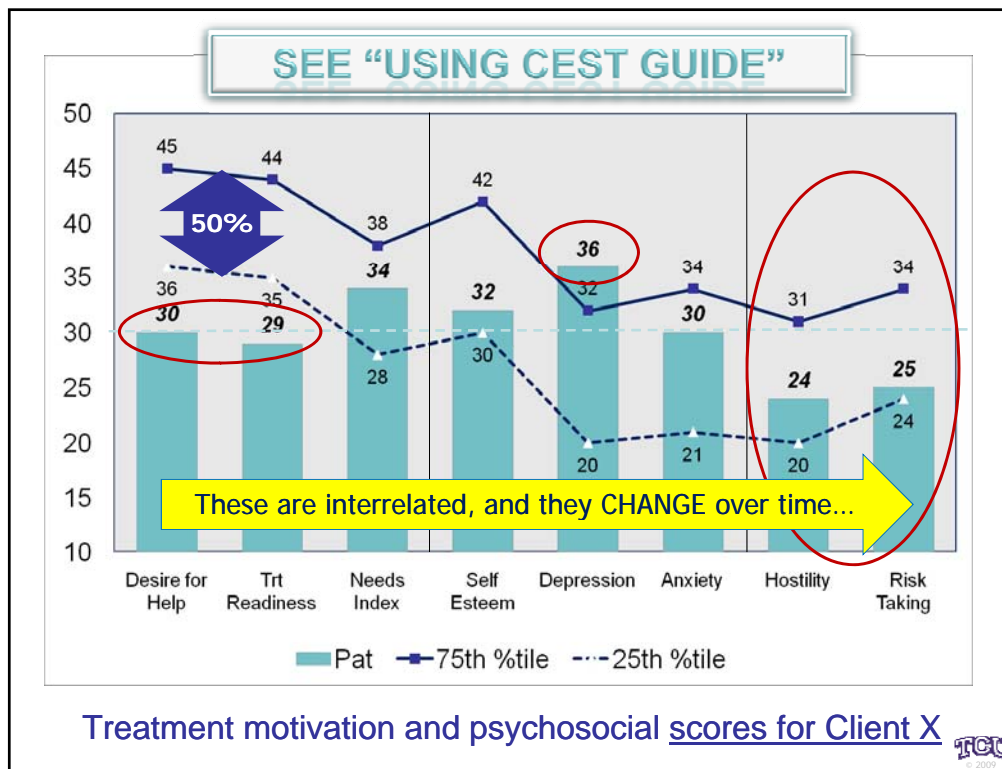
1. TCU Drug Screen II (DRUG SCREEN II)
2. Global Risk Assessment (A/Y-RSKFORM)
3. Criminal History Risk Assessment (CRHSFORM)
4. Criminal Thinking Scales (CTSFORM)

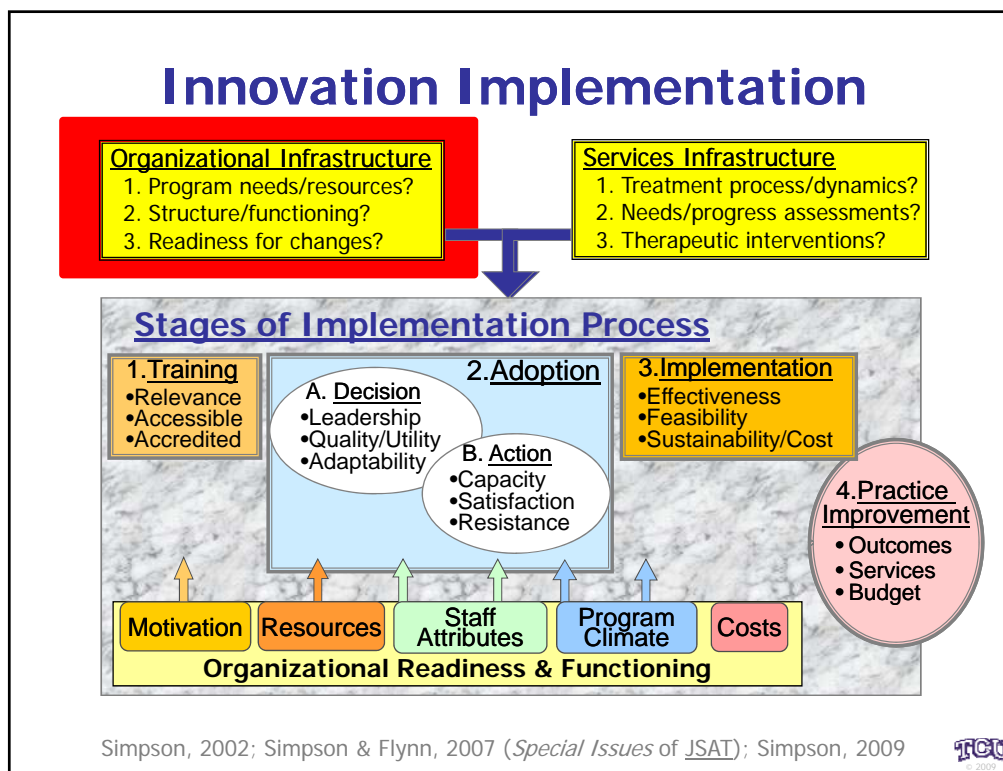
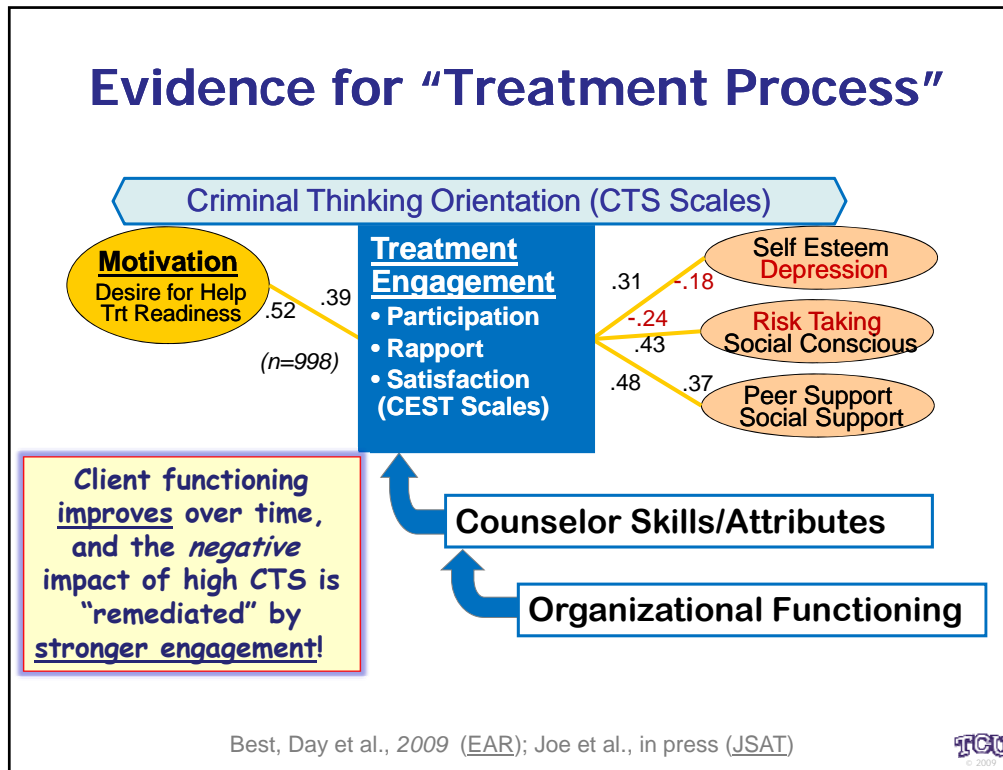
B. Client Health and Social Risk Forms:

1. Physical and Mental Health Status Screen (HLTHFORM)
2. Mental Trauma and PTSD Screen (TRMAFORM)
3. HIV/Hepatitis Risk Assessment (HVHPFORM)
4. Family and Friends Assessment (A/Y-FMFRFORM)

C. Client Evaluation of Self and Treatment (CEST) Forms:

1. Treatment Needs and Motivation (MOTFORM)
2. Psychological Functioning (PSYFORM)
3. Social Functioning (SOCFORM)
4. Treatment Engagement (ENGFORM)





Organizational Readiness for Change (ORC)

Motivation:


- Program Needs
- Training Needs
- Pressures

Resources:

- Offices/Staffing
- Training
- Equipment
- Supervision/Mgmt*

ORC Scales

“Better organizations” provide “better services”




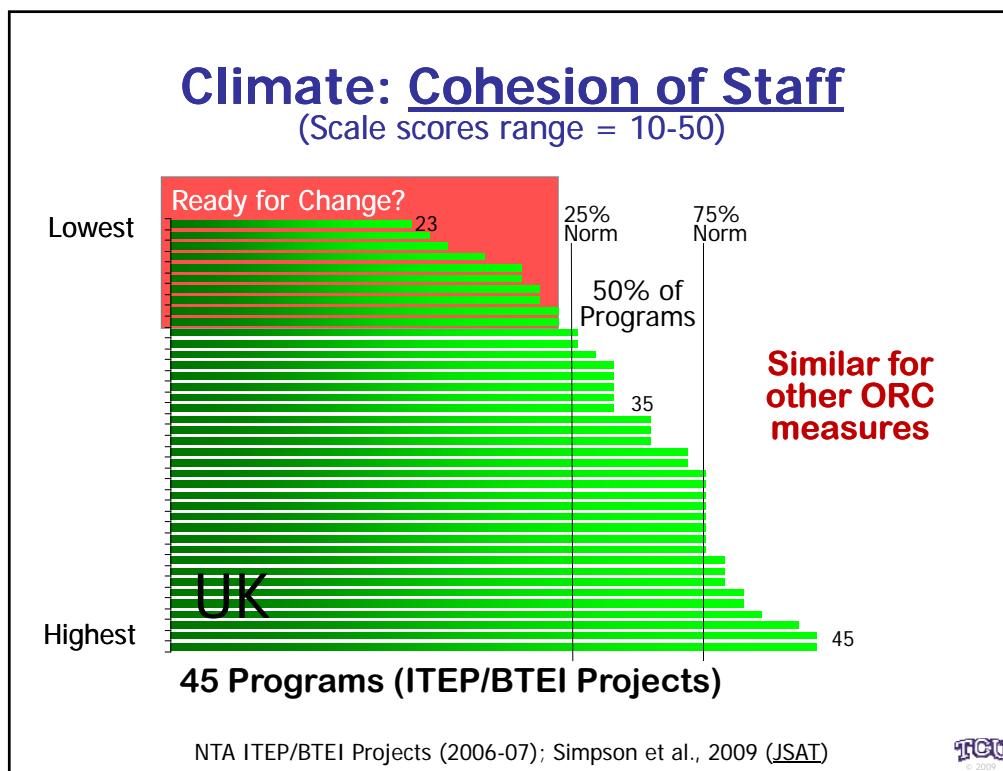
Staff Attributes:

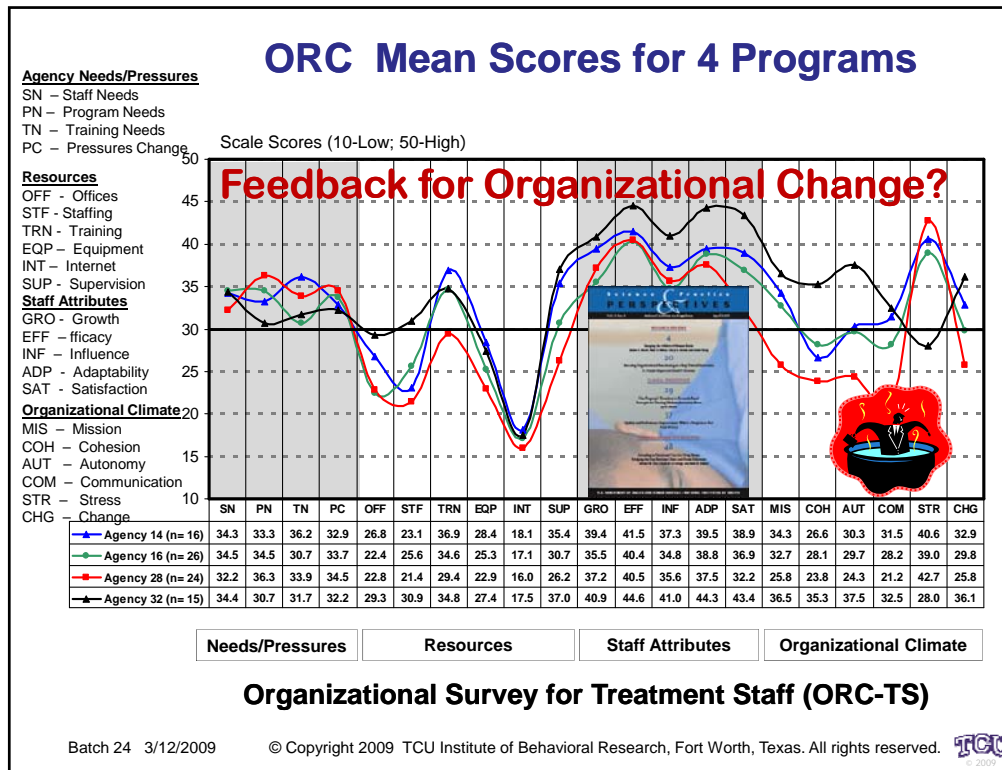
- Growth
- Efficacy
- Influence
- Adaptability
- Satisfaction*

Climate:

- Mission
- Cohesion
- Autonomy
- Communication
- Stress
- Open to Change

Simpson, 2002; Lehman et al, 2002 ; Simpson & Flynn, 2007 (JSAT)



Questions for Further Study of Recovery Engagement and Life Skills (RELS)

1. Does better care planning yield better engagement and retention in treatment?
2. Are the assessments reliable measures of client change? (Intake, CESI, CEST, CTS, TOP...)
3. Is more mapping related to better engagement and retention in treatment?
4. Do brief interventions show measureable effectiveness?
5. Can treatment organizations change their functioning and client performance levels?