



Joining the Dots:
Criminal Justice, Treatment & Harm Reduction
(25-27 March 2009, Kraków, Poland)

Innovation Planning and Implementation Issues for Addiction Treatment Services

Dwayne Simpson
Institute of Behavioral Research
Texas Christian University, Fort Worth

Principles of Drug Abuse Treatment for Criminal Justice Populations: A Research-Based Guide (2006)

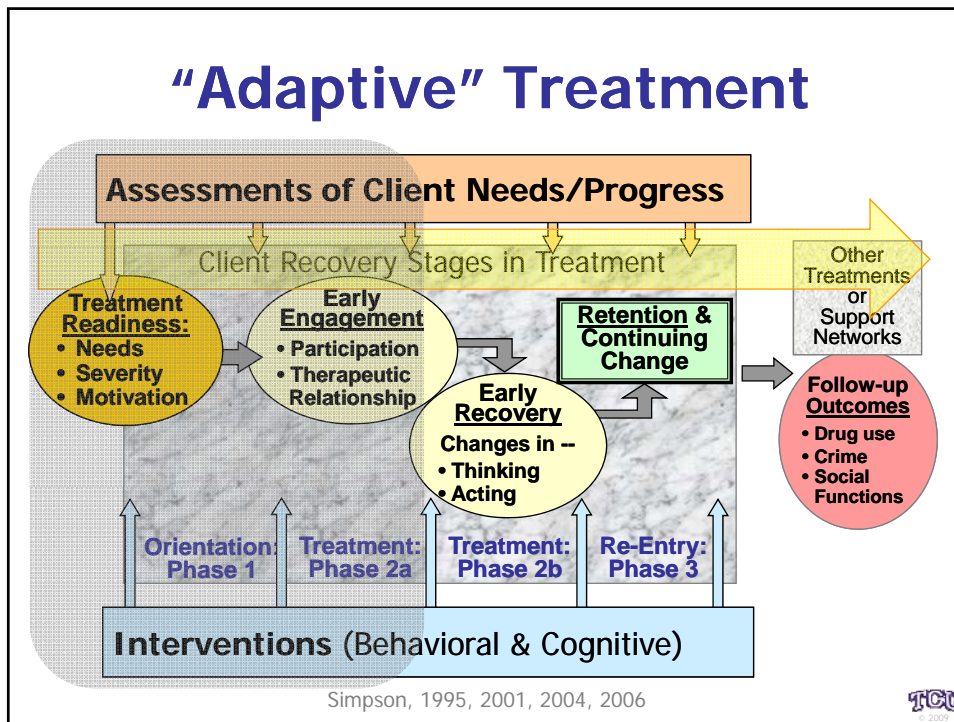


National Institute on
Drug Abuse (NIDA)

Highlights

- Assessment is 1st step
- Tailor services to fit needs
- Engage/retain offender in TX
- Monitor progress in TX
- Balance rewards & sanctions
- Medications are part of TX
- Target criminality issues
- Mental health & HIV/HepC risks
- Plan for community re-entry
- CJ/TX Systems integration



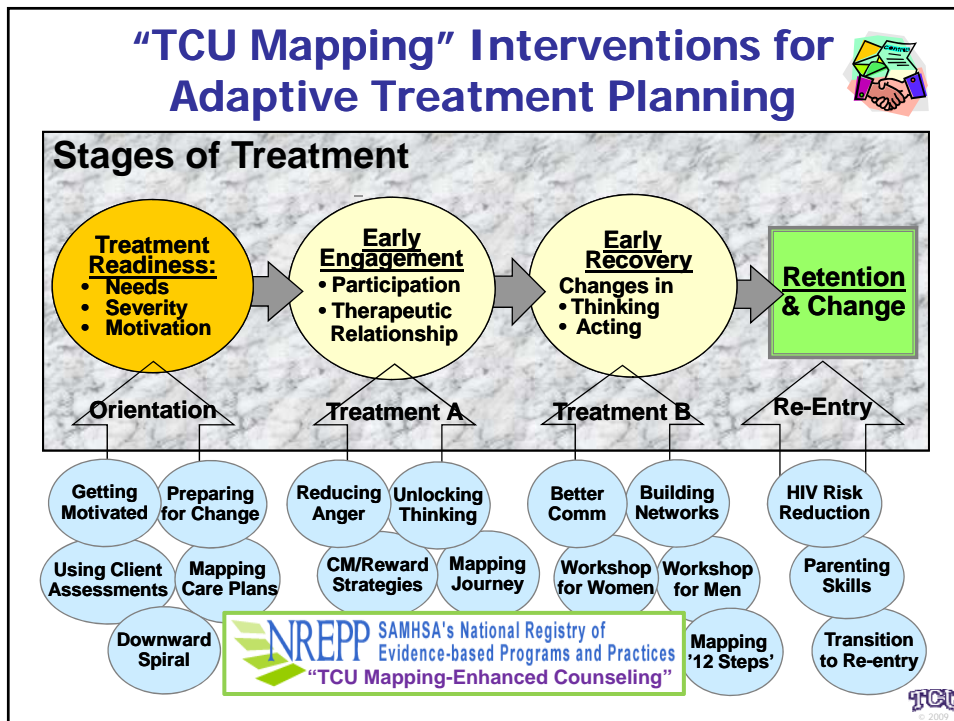
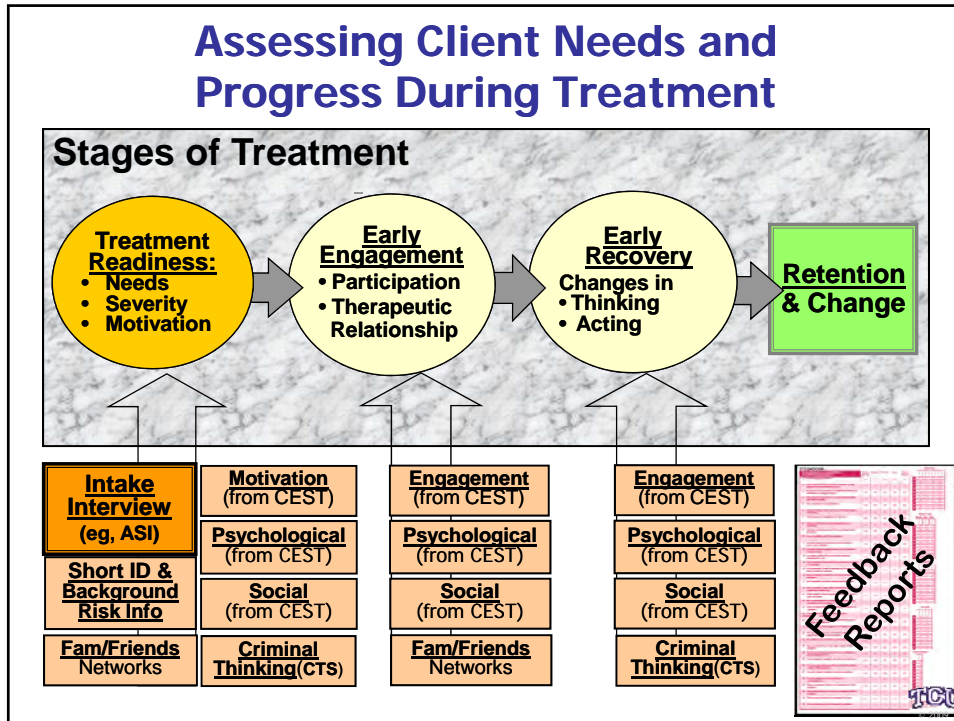


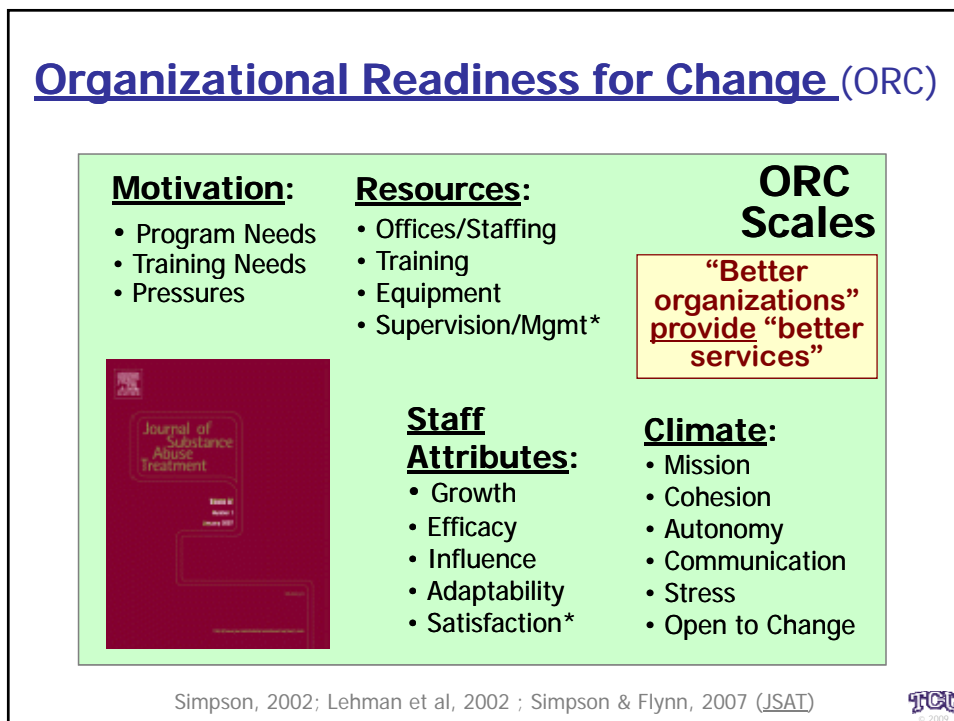
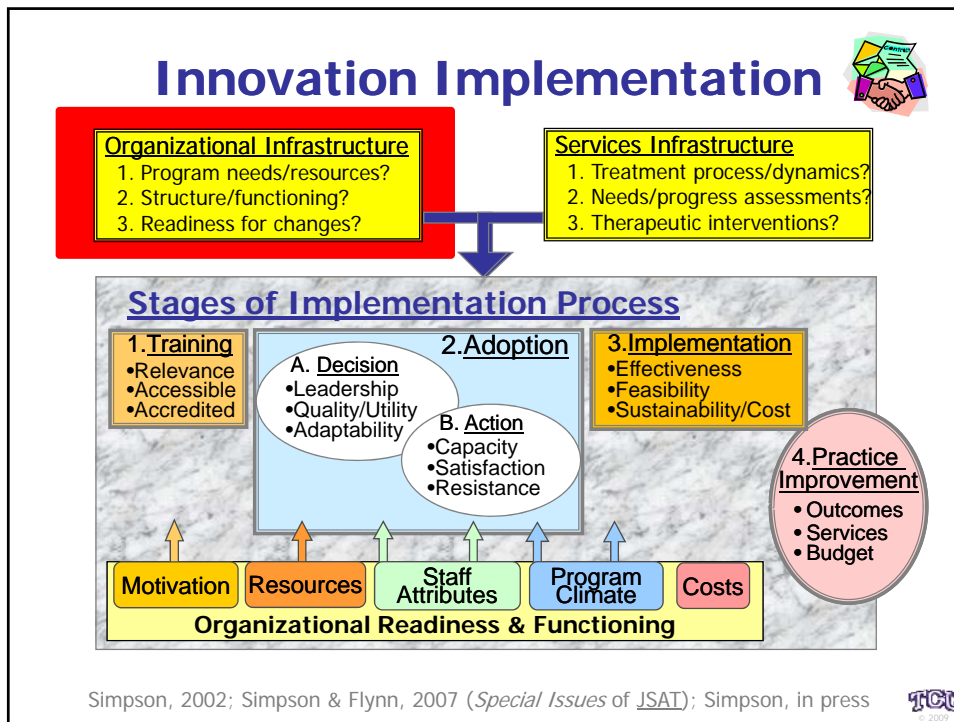
Measures of Offender Functioning

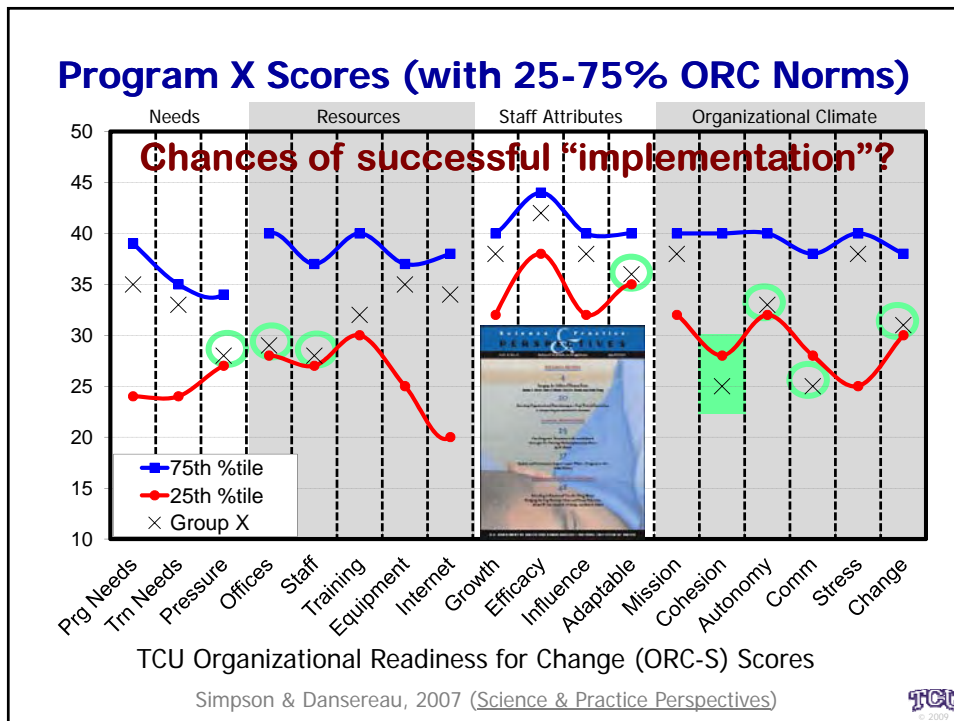
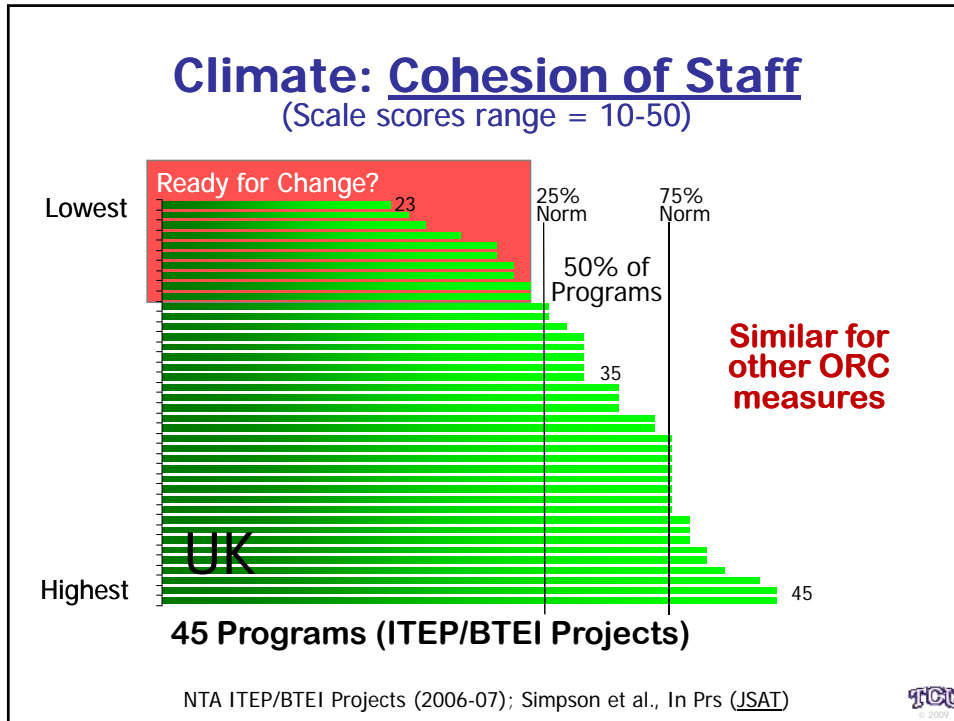
| | | |
|--|---|---|
| <p><u>Motivation</u></p> <ul style="list-style-type: none"> Problems Desire for Help TX Readiness Needs/Pressures | <p><u>Social Functioning</u></p> <ul style="list-style-type: none"> Hostility Risk Taking Social Support Social Desirability | <p><u>Criminal Thinking</u></p> <ul style="list-style-type: none"> Entitlement Justification Irresponsibility Power Orientation Cold Heartedness Rationalization |
|  | <p><u>Psychological Functioning</u></p> <ul style="list-style-type: none"> Self Esteem Depression/Anxiety Decision Making Expectancy | <p><u>Treatment Engagement</u></p> <ul style="list-style-type: none"> Satisfaction Rapport Participation Peer Support |

Joe et al, 2002; Simpson, 2004 (*JSAT*); Simpson & Knight, 2007 (*CJB*)

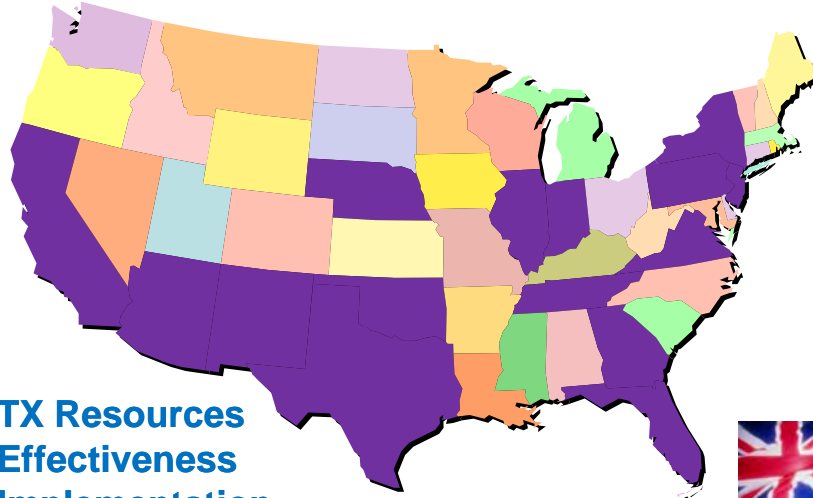
TCU
© 2009







TCU Collaborators in NIDA Projects

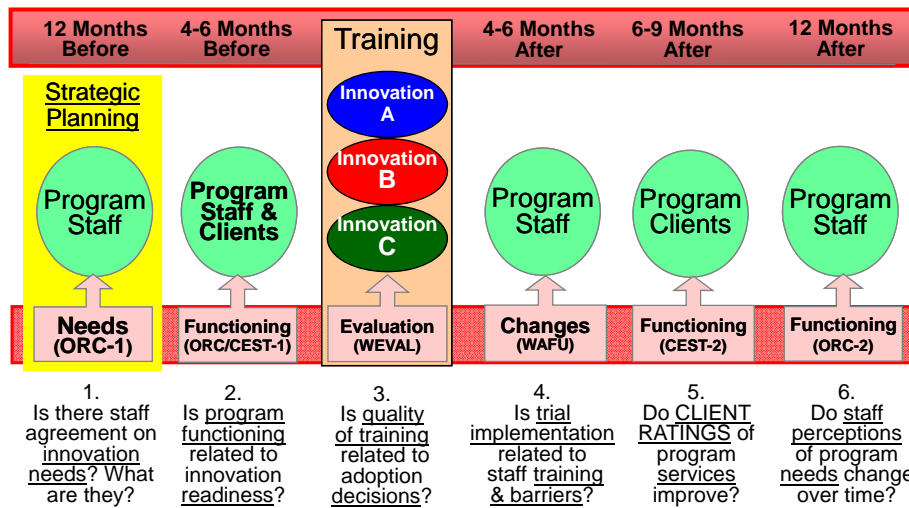


- TX Resources
- Effectiveness
- Implementation
- Costing Tools



TCU
© 2009

"Chain of Evidence" for Change



Simpson, Joe, & Rowan-Szal, 2007 (Special Issue of JSAT)

TCU
© 2009

The screenshot shows the homepage of the Texas Institute of Behavioral Research (IBR) at Texas Christian University (TCU). The page features a purple header with the TCU logo and the text "Texas Institute of Behavioral Research at Texas Christian University". A search bar is located in the top right corner. The main content area is divided into three columns. The left column contains a navigation menu with links for "IBR HOME PAGE", "MANUALS", "FORMS", "EVIDENCE", "ABOUT IBR-TCU", "STAFF", "PUBLICATIONS", "PRESENTATIONS", "PROJECTS", "NEWSLETTERS", "OTHER LINKS", "WHAT'S NEW", and "SITE GUIDES". The middle column features a central message: "A National Research Center for addiction treatment studies in community and correctional settings (over 500 free resource files available)". Below this message is a list of resources: "Overviews of TCU Treatment System & Conceptual Models", "Guide for Selecting from 20 Intervention Manuals", "Guide for Selecting from 75 Assessment Forms", "Project Updates & Summaries", and "New Publications (Abstracts), Presentations, Newsletters". The right column is titled "EVIDENCE" and lists various resources: "SUMMARY", "TCU Mapping-Enhanced Counseling", "Treatment Process", "Counseling Manuals", "Corrections-Based Treatment", "National Evaluations", "Organizational Readiness", and "Assessment Fact Sheets (with norms)". At the bottom of the page, there is a large purple box with the website address "www.ibr.tcu.edu" and an illustration of a doctor with the text "Visitors 500/day 30 mins".

TCU Texas Institute of Behavioral Research
at Texas Christian University

SEARCH

IBR HOME PAGE

MANUALS
FORMS
EVIDENCE

ABOUT IBR-TCU
STAFF
PUBLICATIONS
PRESENTATIONS
PROJECTS
NEWSLETTERS

OTHER LINKS
WHAT'S NEW

SITE GUIDES:

**A National Research Center
for addiction treatment studies
in community and correctional settings
(over 500 free resource files available)**

- Overviews of TCU Treatment System & Conceptual Models
- Guide for Selecting from 20 Intervention Manuals
- Guide for Selecting from 75 Assessment Forms
- Project Updates & Summaries
- New Publications (Abstracts), Presentations, Newsletters

EVIDENCE

SUMMARY
TCU Mapping-Enhanced Counseling
Treatment Process
Counseling Manuals
Corrections-Based Treatment
National Evaluations
Organizational Readiness
Assessment Fact Sheets (with norms)

www.ibr.tcu.edu

"Visitors"
500/day
30 mins