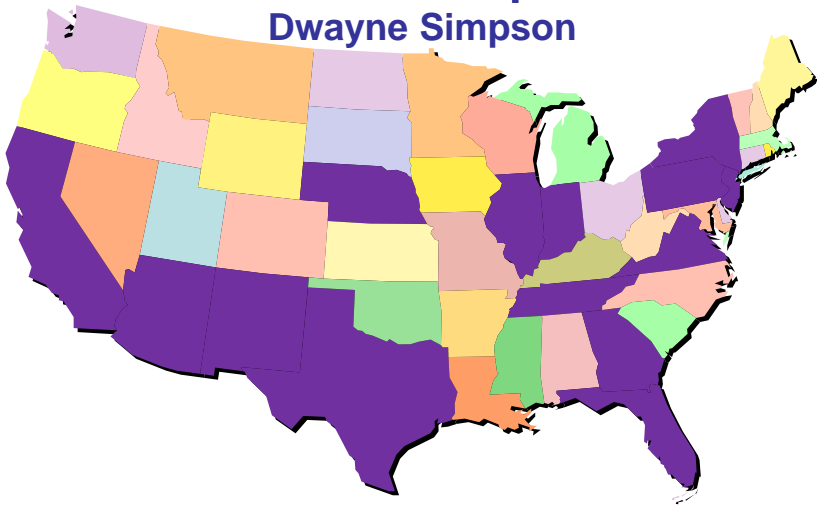


**TCU CJ-Collaborators Meeting**  
TCU Alumni Center, Fort Worth (August 27, 2008)


---

**Introduction and Conceptual Overview**  
Dwayne Simpson




1

**Principles of Drug Abuse Treatment  
for Criminal Justice Populations:  
A Research-Based Guide (2006)**




**National Institute on  
Drug Abuse (NIDA)**



**Highlights**

- Assessment is 1<sup>st</sup> step
- Tailor services to fit needs
- Engage/retain offender in TX
- Monitor progress in TX
- Balance rewards & sanctions
- Medications are part of TX
- Target criminality issues
- Mental health & HIV/HepC risks
- Plan for community re-entry

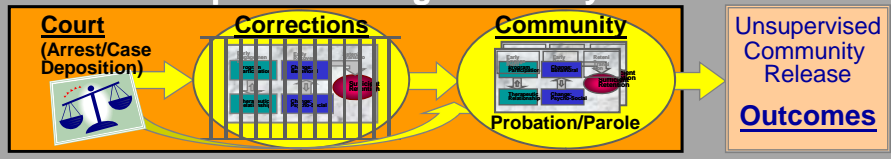


2

## TCU CJ-Collaborators Meeting

TCU Alumni Center, Fort Worth (August 27, 2008)

### Treatment Supervision Stages in CJ System



- Risks & Needs Assessments
- Treatment Interventions/Monitoring
- Community Re-entry Strategies
- Special Populations (HIV, MICA, Women)
- Systems Integration

3

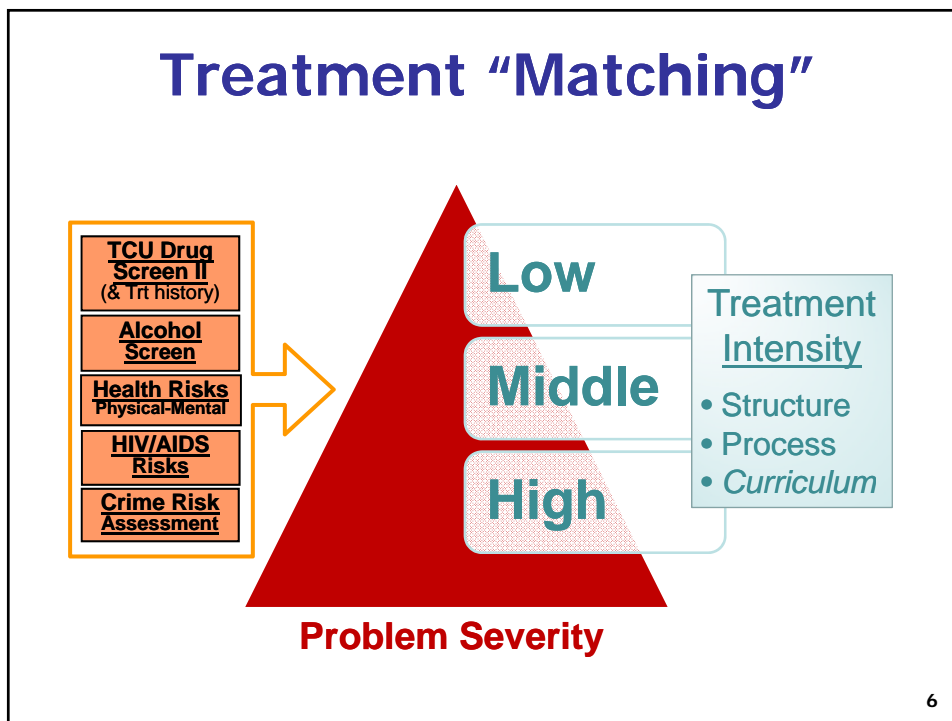
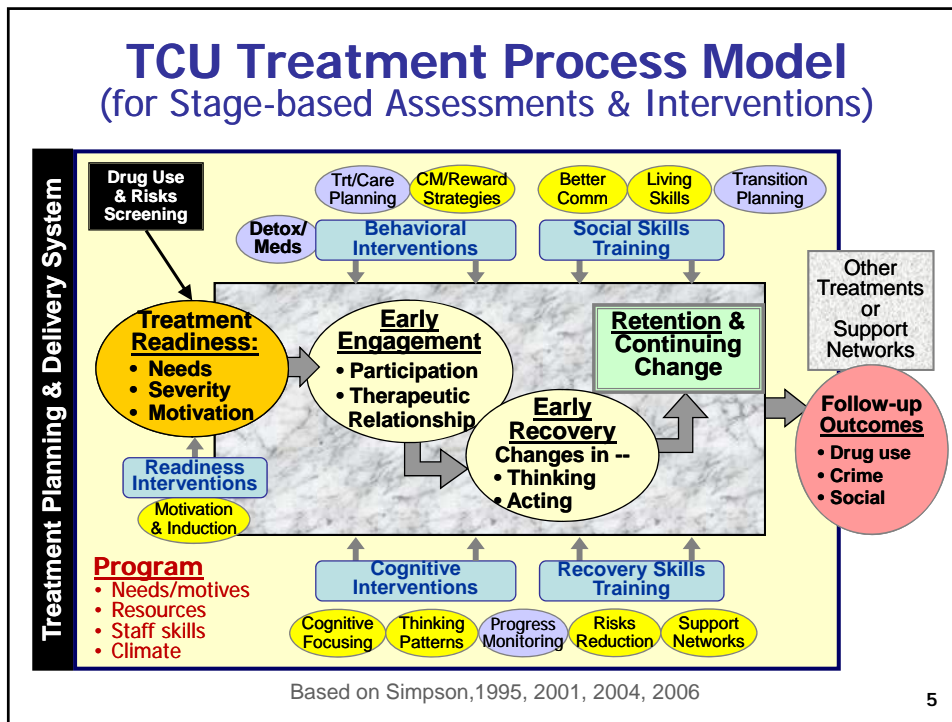
**CJ-DATS**

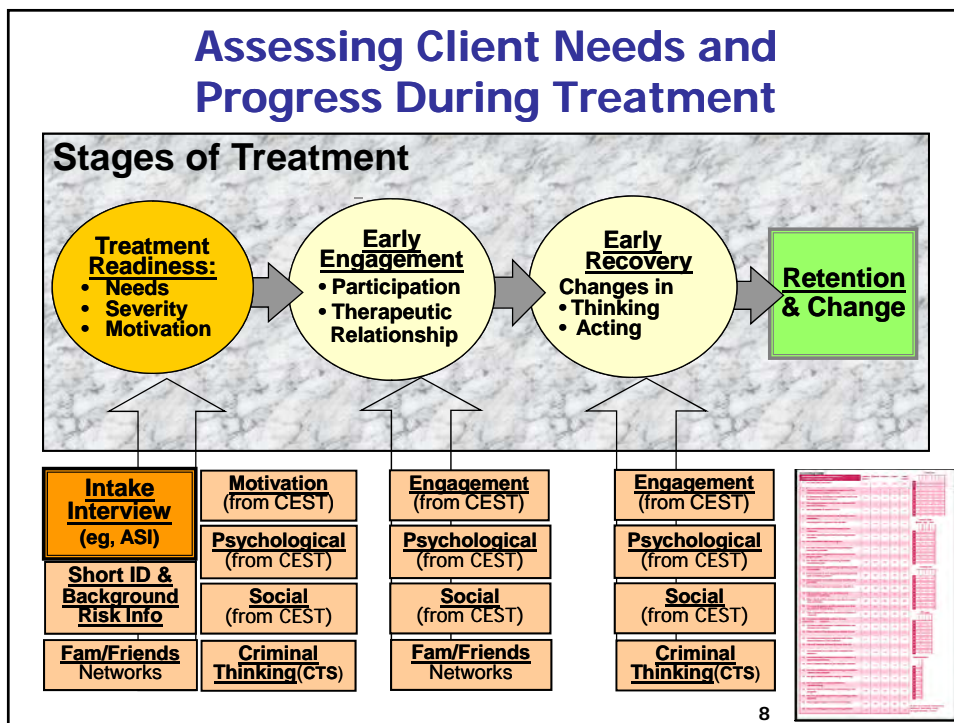
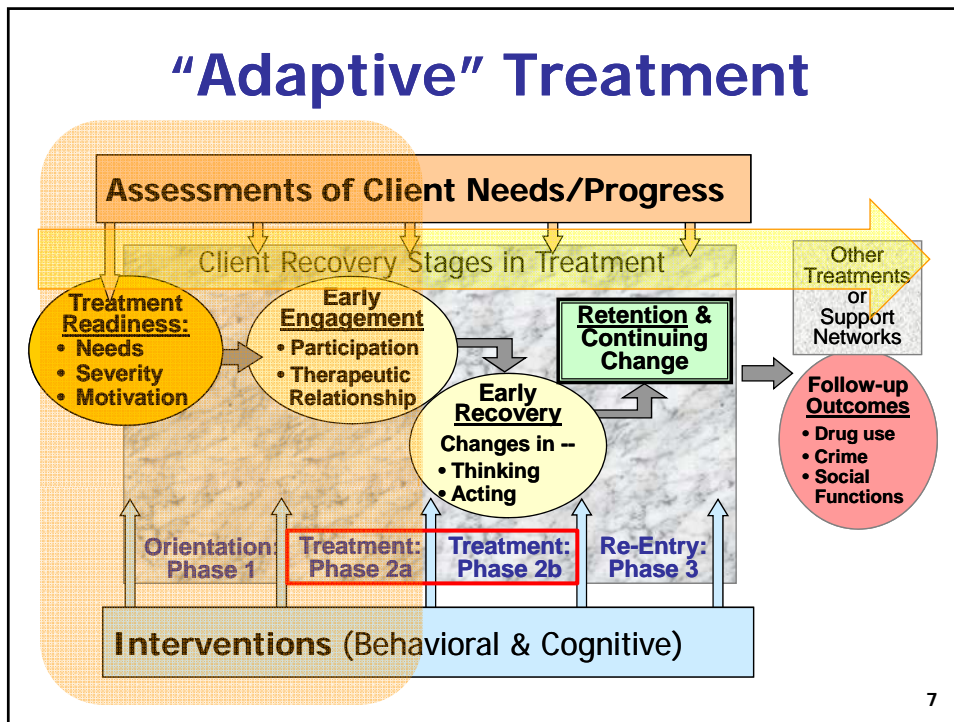
## TCU CJ-Collaborators Meeting

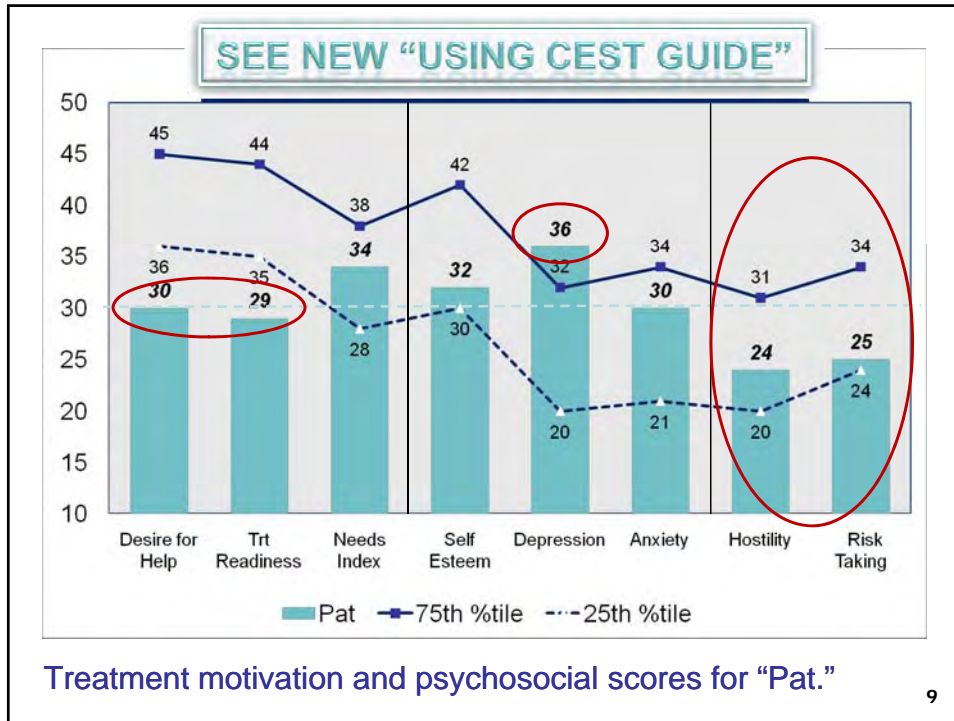
TCU Alumni Center, Fort Worth (August 27, 2008)

1. How do the TCU projects and studies “fit together” – and why should anyone care?
2. Is there a difference between “matching” versus “adaptive” treatment planning?
3. How are other CJ systems using the TCU resources for assessment and intervention?
4. Is there evidence that any of this “stuff works” or makes any difference?
5. What do we know about how much new innovations “cost”?
6. What’s next – and does anyone want to be involved?

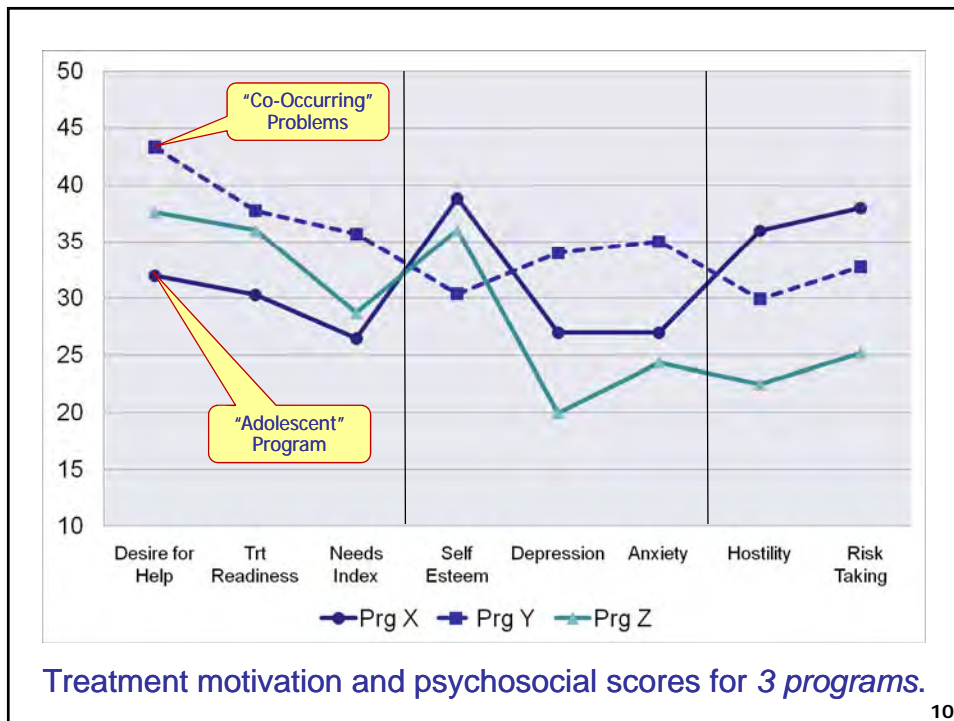
4



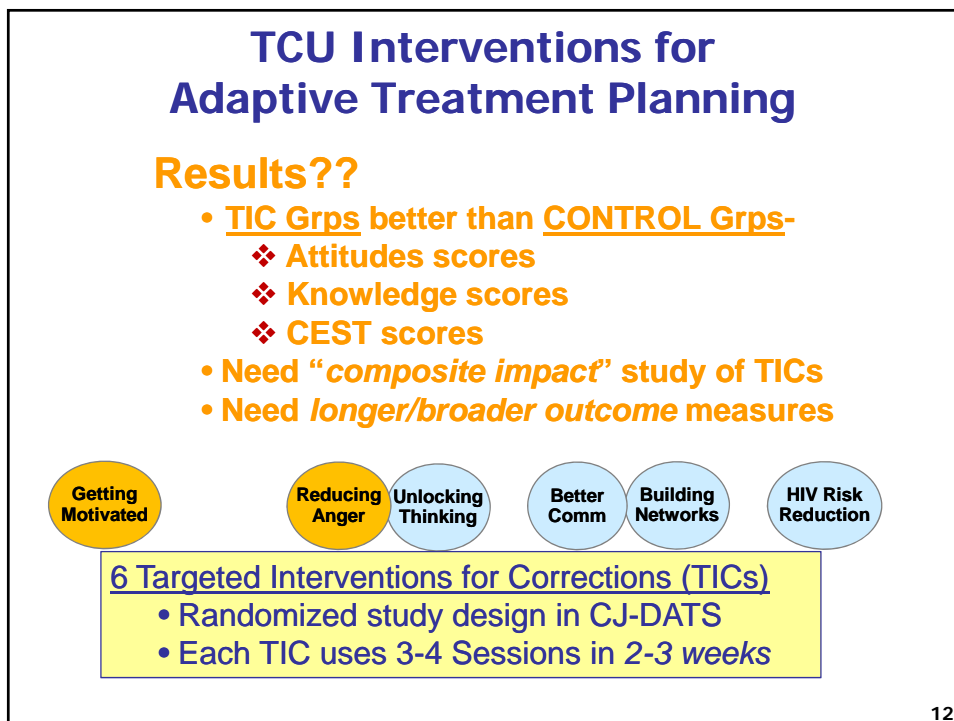
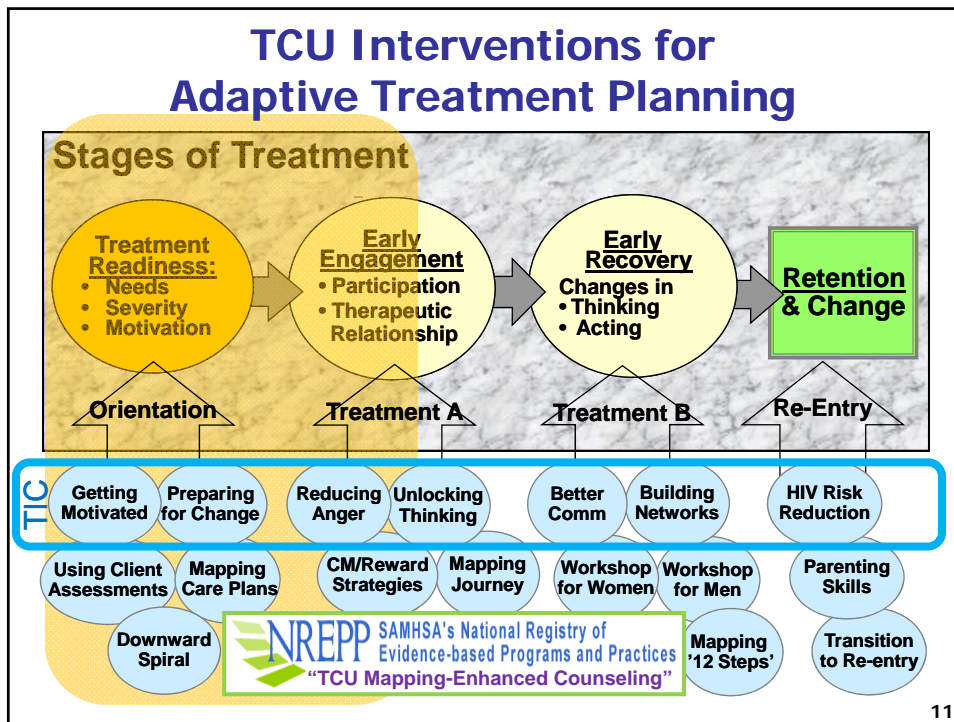


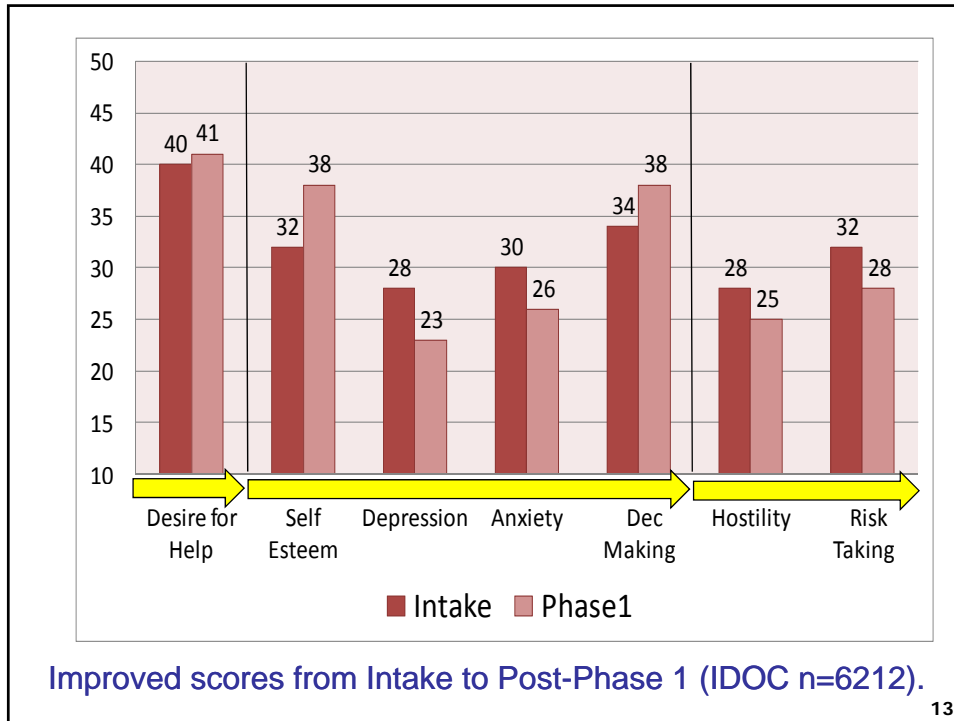


9

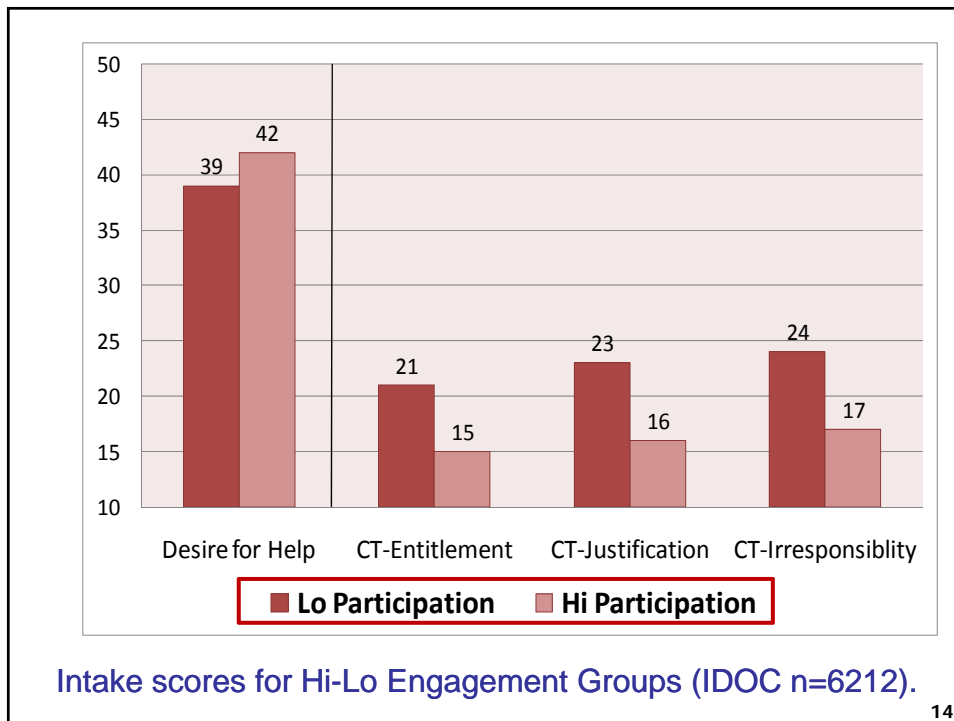


10

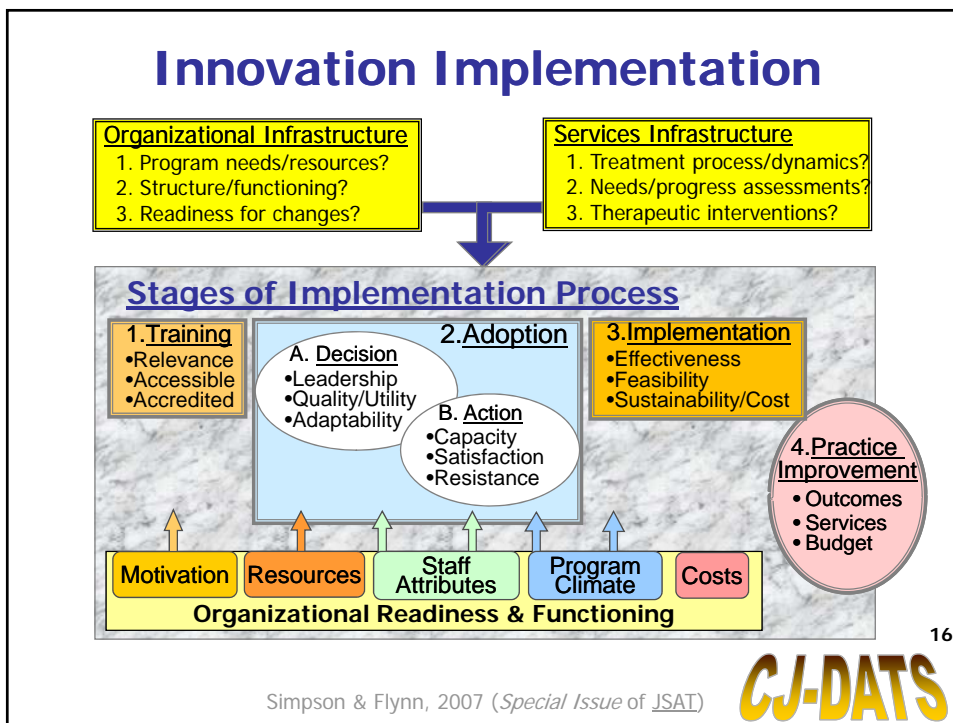
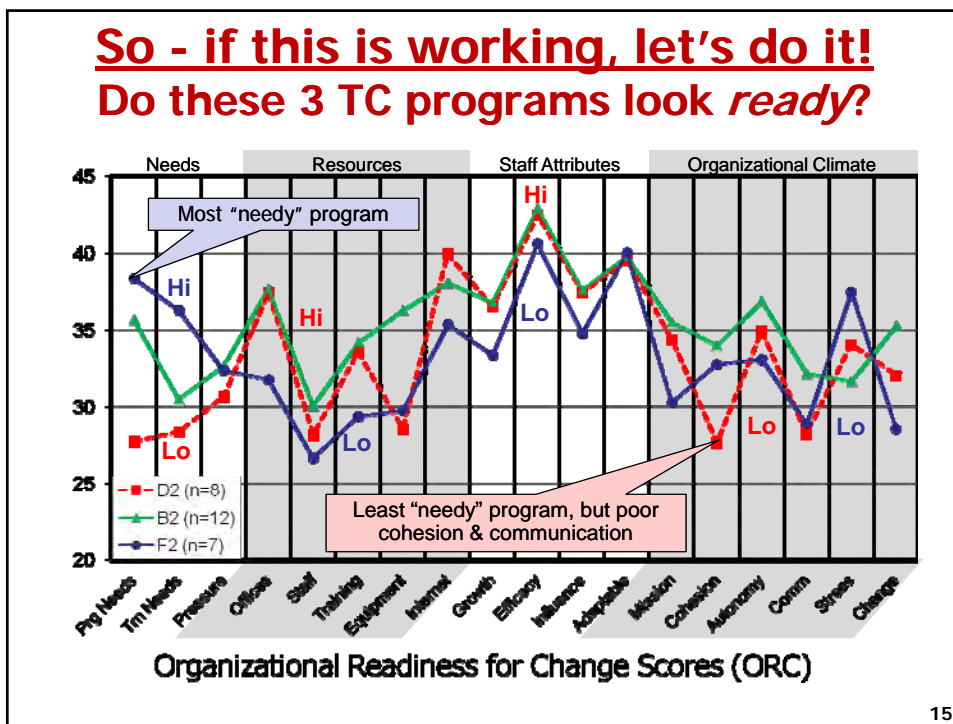




13



14





The screenshot shows the homepage of the Texas Institute of Behavioral Research (IBR) at Texas Christian University. The page features a purple header with the TCU logo and the text "Texas Institute of Behavioral Research at Texas Christian University". A search bar is located in the top right corner. The main content area is divided into three columns. The left column contains a navigation menu with links to "IBR HOME PAGE", "MANUALS", "FORMS", "EVIDENCE", "ABOUT IBR-TCU", "STAFF", "PUBLICATIONS", "PRESENTATIONS", "PROJECTS", "NEWSLETTERS", "OTHER LINKS", "WHAT'S NEW", and "SITE GUIDES". The middle column features a central message: "A National Research Center for addiction treatment studies in community and correctional settings (over 500 free resource files available)". Below this message is a list of resources: "Overviews of TCU Treatment System & Conceptual Models", "Guide for Selecting from 20 Intervention Manuals", "Guide for Selecting from 75 Assessment Forms", "Project Updates & Summaries", and "New Publications (Abstracts), Presentations, Newsletters". The right column is titled "EVIDENCE" and lists various resources: "SUMMARY", "TCU Mapping-Enhanced Counseling", "Treatment Process", "Counseling Manuals", "Corrections-Based Treatment", "National Evaluations", "Organizational Readiness", and "Assessment Fact Sheets (with norms)". At the bottom of the page, there is a large purple box with the website address "www.ibr.tcu.edu" and a map of Texas with the word "DATOS" overlaid. The page number "17" is visible in the bottom right corner.

**TCU** Texas Institute of Behavioral Research  
at Texas Christian University

SEARCH

IBR HOME PAGE

MANUALS  
FORMS  
EVIDENCE

ABOUT IBR-TCU  
STAFF  
PUBLICATIONS  
PRESENTATIONS  
PROJECTS  
NEWSLETTERS

OTHER LINKS  
WHAT'S NEW

SITE GUIDES:

A National Research Center  
for addiction treatment studies  
in community and correctional settings  
(over 500 free resource files available)

- Overviews of *TCU Treatment System & Conceptual Models*
- *Guide for Selecting from 20 Intervention Manuals*
- *Guide for Selecting from 75 Assessment Forms*
- Project Updates & Summaries
- New Publications (Abstracts), Presentations, Newsletters

EVIDENCE

SUMMARY

TCU Mapping-Enhanced Counseling

Treatment Process

Counseling Manuals

Corrections-Based Treatment

National Evaluations

Organizational Readiness

Assessment Fact Sheets (with norms)

[www.ibr.tcu.edu](http://www.ibr.tcu.edu)

DATOS

17