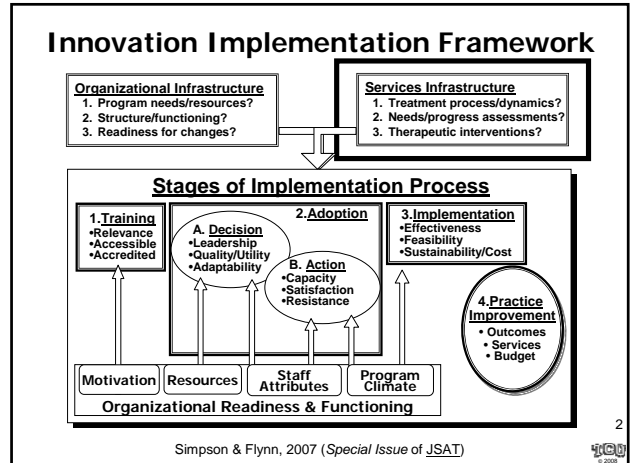


Blending Addiction Science and Treatment  
 The Impact of Evidence-Based Practices on Individuals,  
 Families, and Communities  
 June 2-3, 2008 • Cincinnati, Ohio

## Evidence-Based Frameworks for Planning Innovations and Field Implementation

**D. Dwayne Simpson, Ph.D.**  
 TCU Institute of Behavioral Research  
 Fort Worth, Texas

1



### Evidence-Based Frameworks for Planning Innovations and Field Implementation

- ◆ Effectiveness of TX practice
- ◆ Identify core TX components
- ◆ Prescribe a plan for action

Website: [www.ibr.tcu.edu](http://www.ibr.tcu.edu)

3

## DATOS

### Drug Abuse Treatment Outcome Studies

NIDA's Third National Evaluation of Treatment Effectiveness

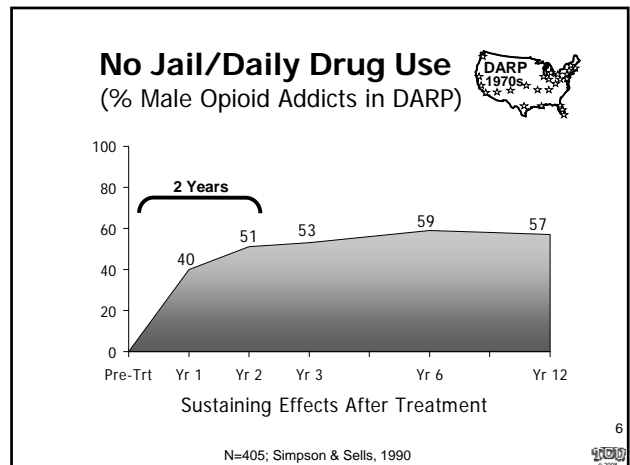
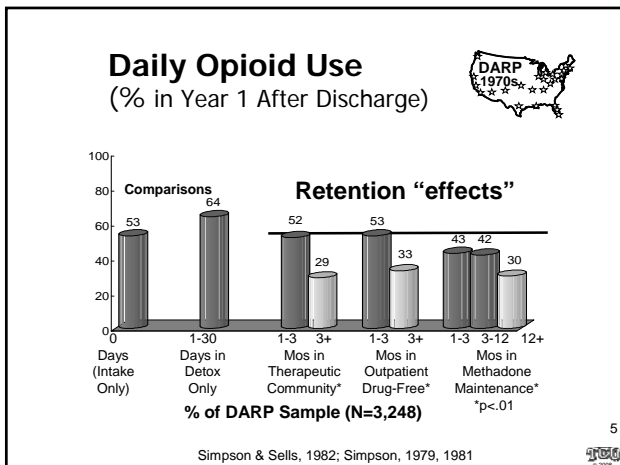
**10,000 Adults**  
 96 Programs  
 11 Cities

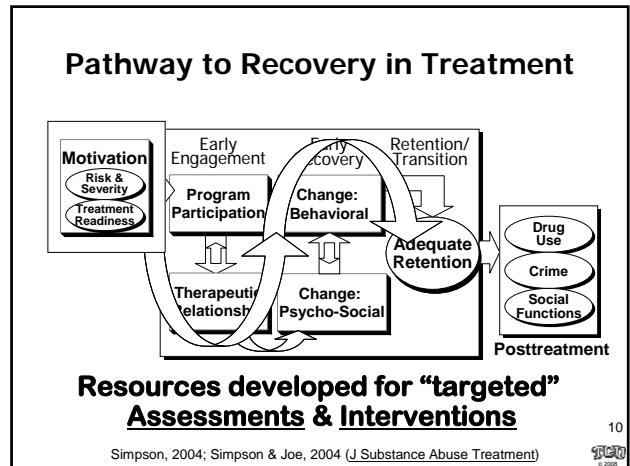
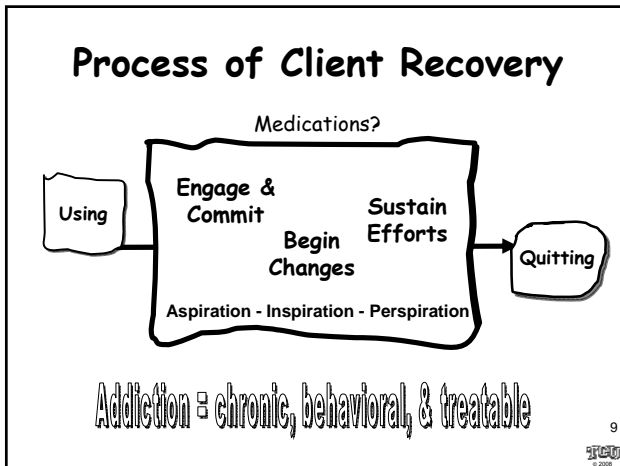
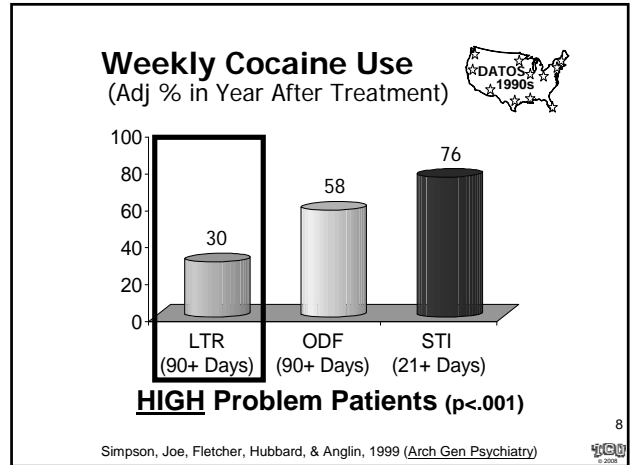
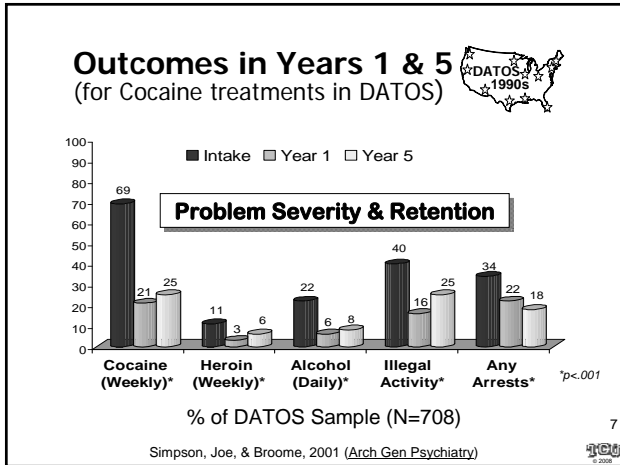
**1,200 Adolescents**  
 23 Programs  
 4 Cities

**TOPS** (2<sup>nd</sup> US Study 1980s)  
**DARP** (1<sup>st</sup> US Study 1970s)

300+ Studies Published on 65,000 Drug Users  
 Treated in over 300 Programs

4

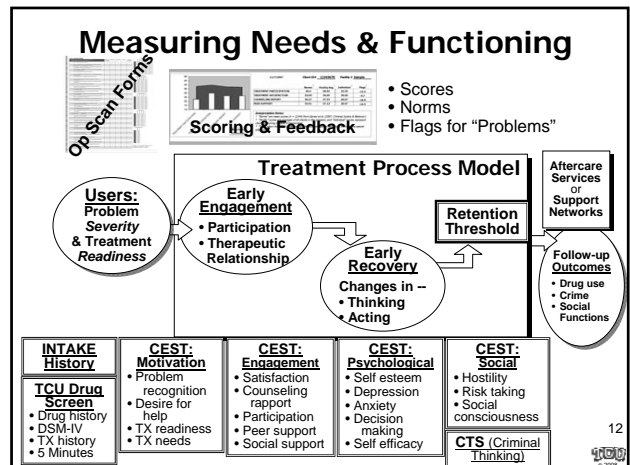


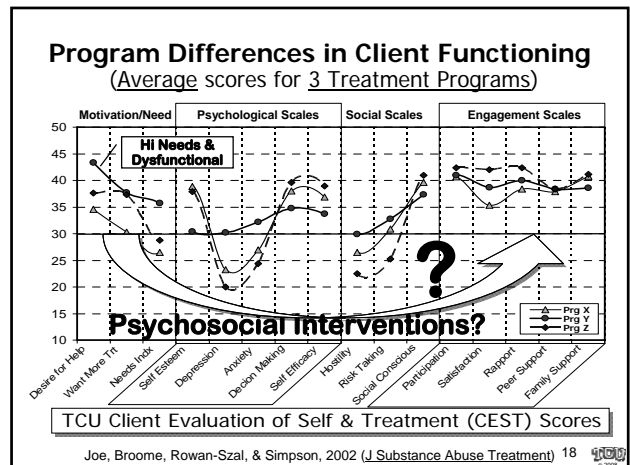
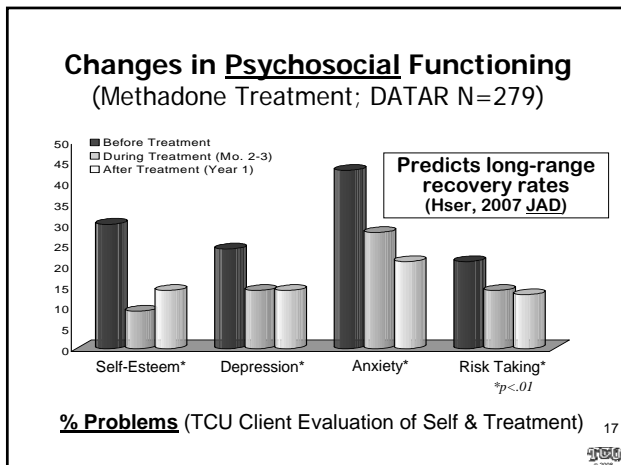
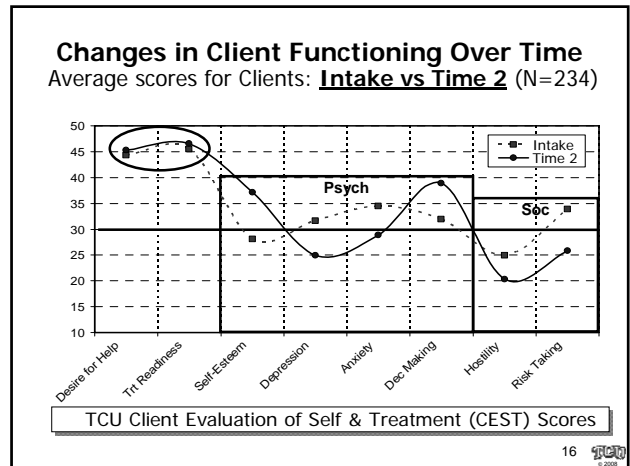
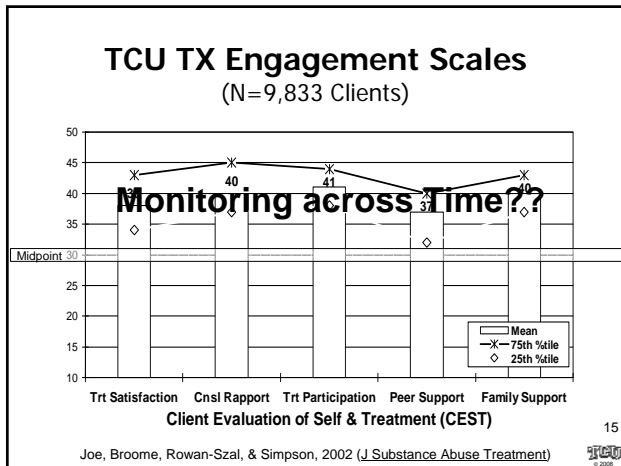
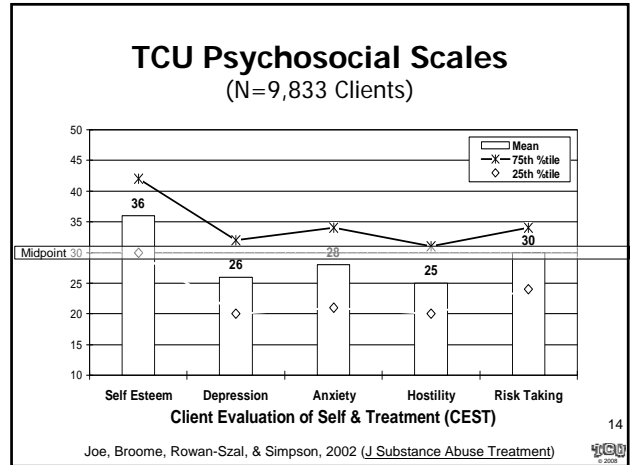
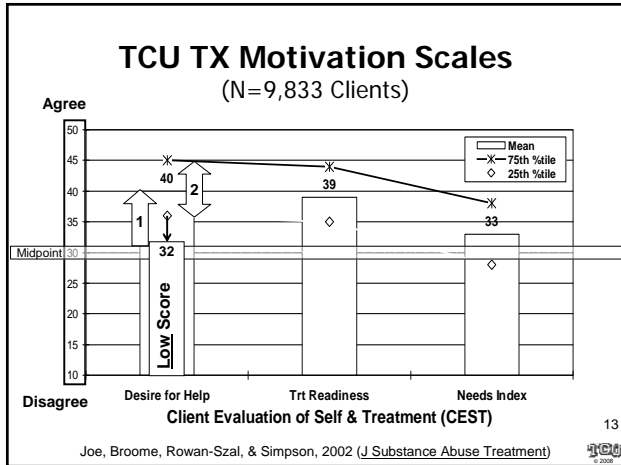


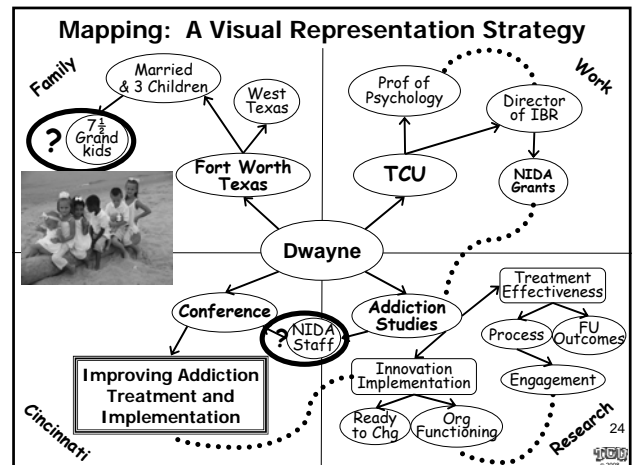
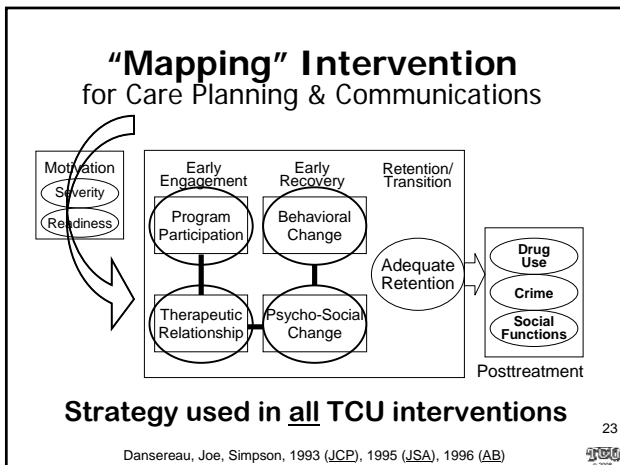
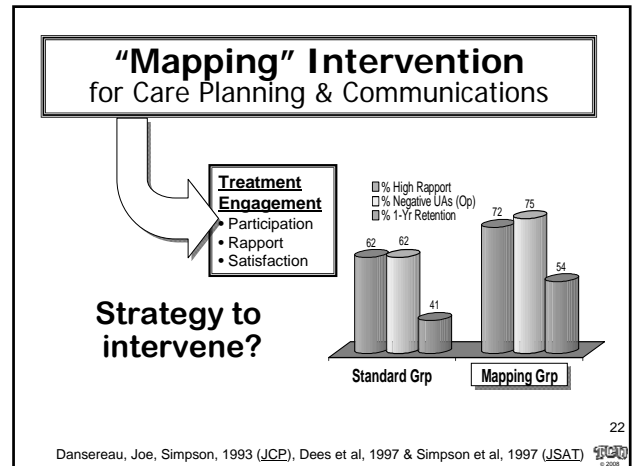
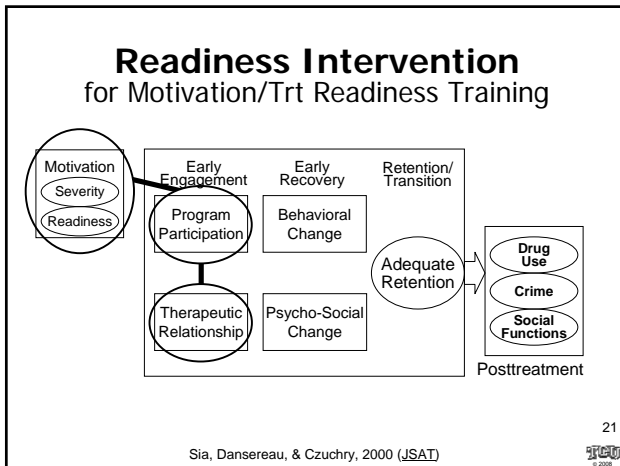
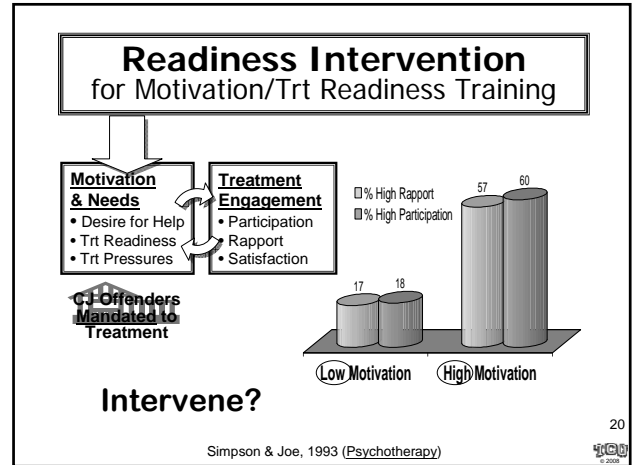
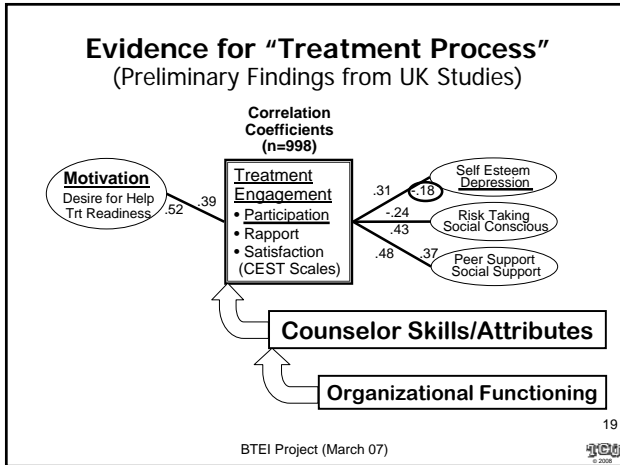
## Evidence-Based Frameworks for Planning Innovations and Field Implementation

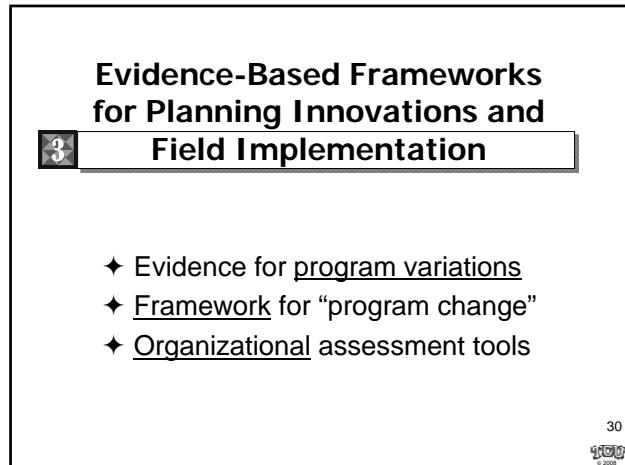
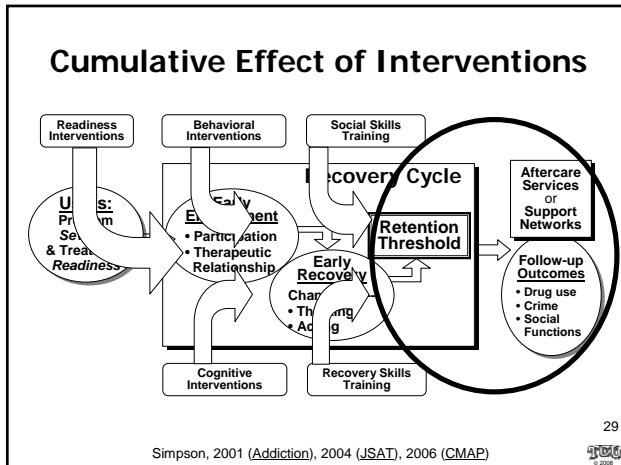
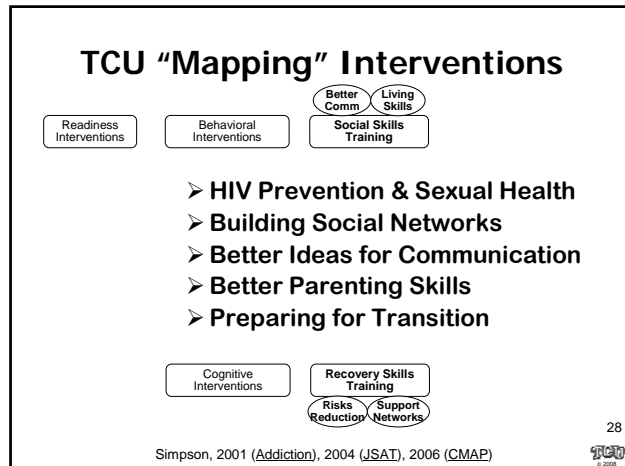
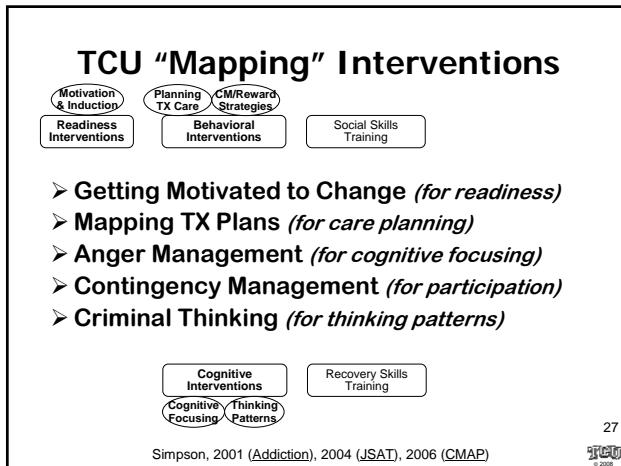
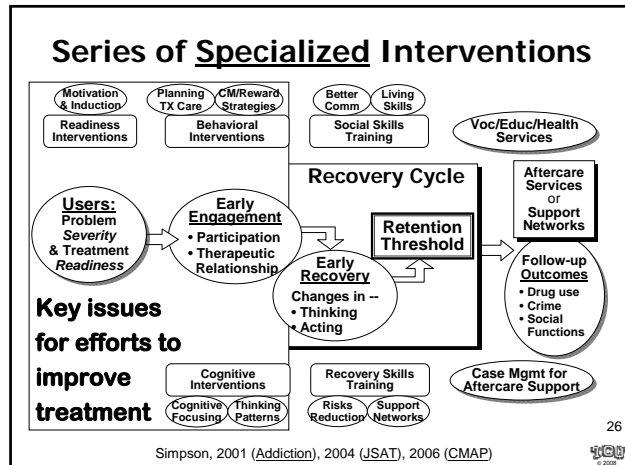
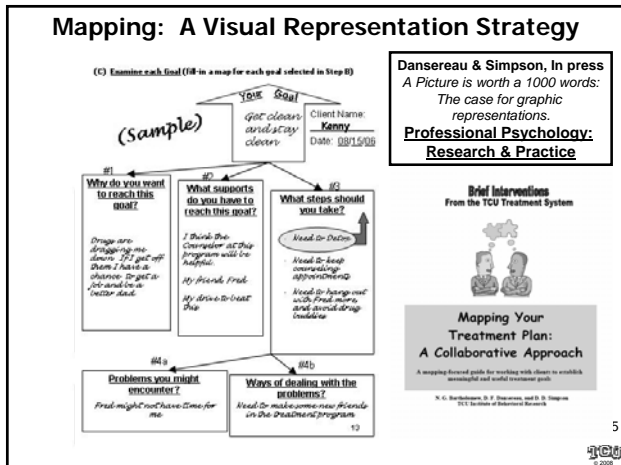
2

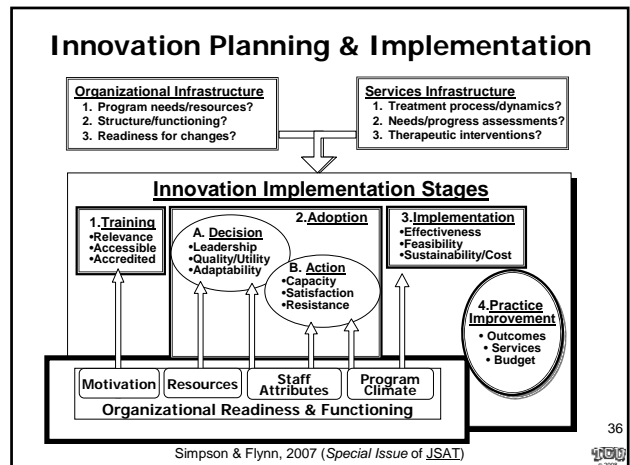
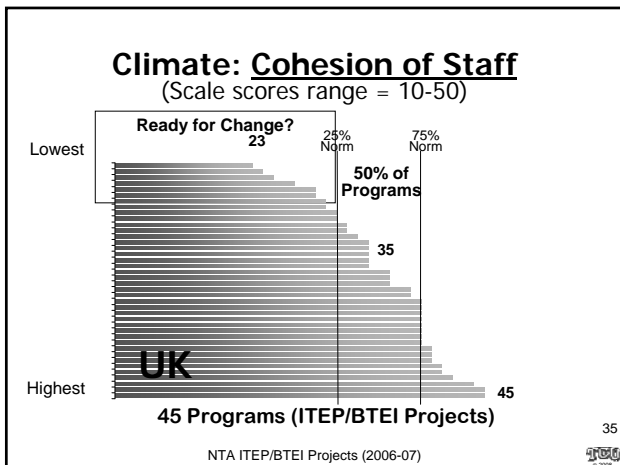
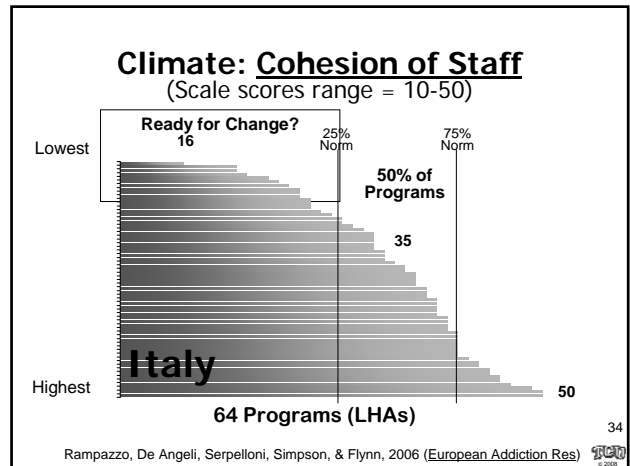
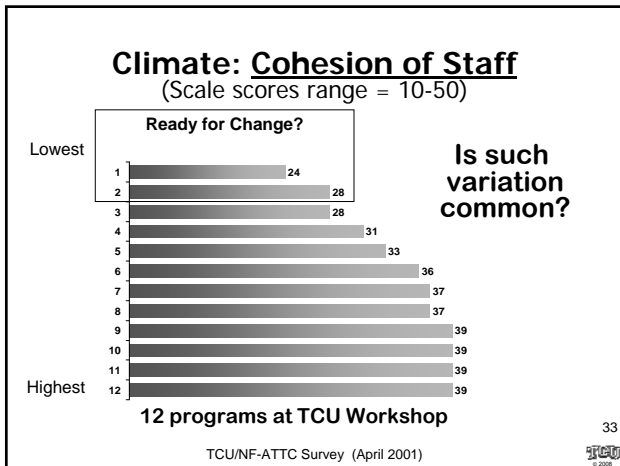
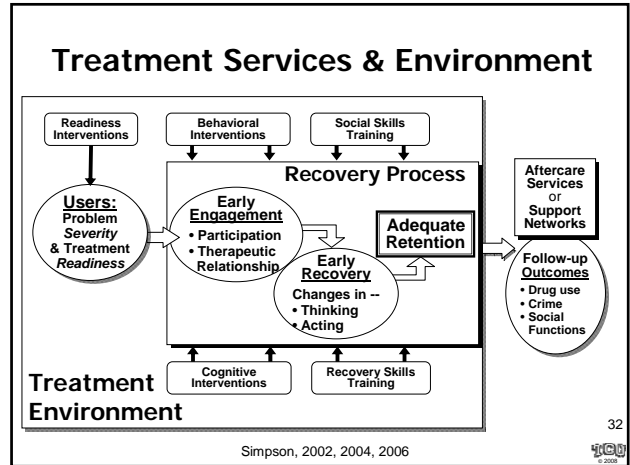
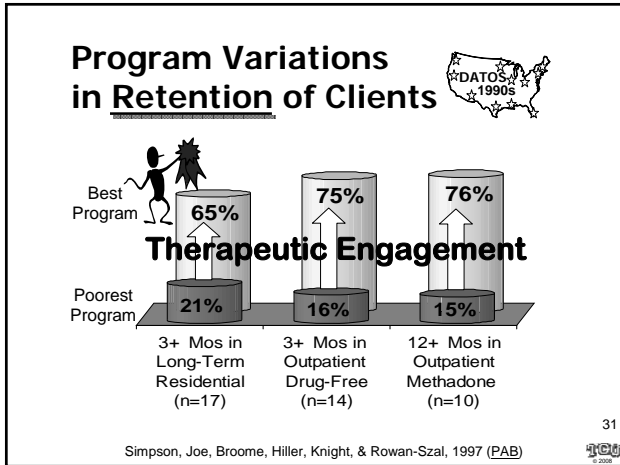
- ◆ Screening & assessment tools
- ◆ TX strategies & interventions
- ◆ Framework for integrated care












### Measures of Program Training Needs

Staff attitudes & perceptions --

**PTN Scales**

1. Program Facilities/Climate
2. Satisfaction with Past Training
3. Preferences for New Training
4. General Training Needs of Staff
5. Preferences for Training Styles
6. Program Computer Resources
7. Training Barriers



Rowan-Szal, Greener, Joe, & Simpson, 2007 (Special Issue of JSAT)

### Measures of Organizational Functioning

**Motivation:**

- Program Needs
- Training Needs
- Pressures

**Resources:**

- Offices/Staffing
- Training
- Equipment

**ORC Scales**


**“Better organizations” provide “better services”**

**Staff Attributes:**

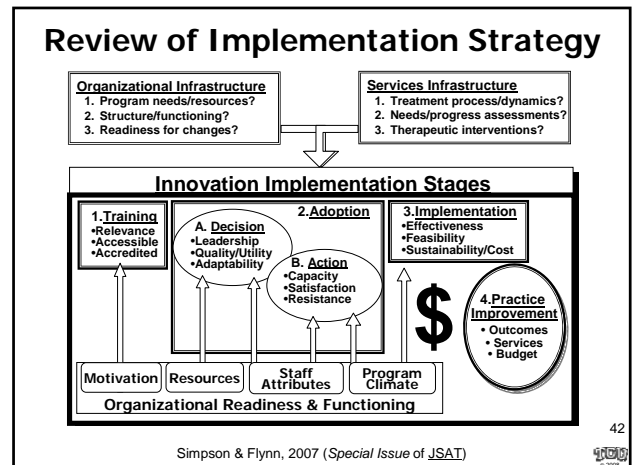
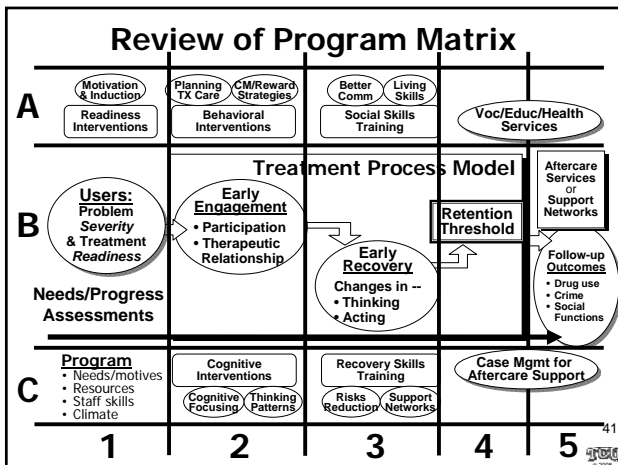
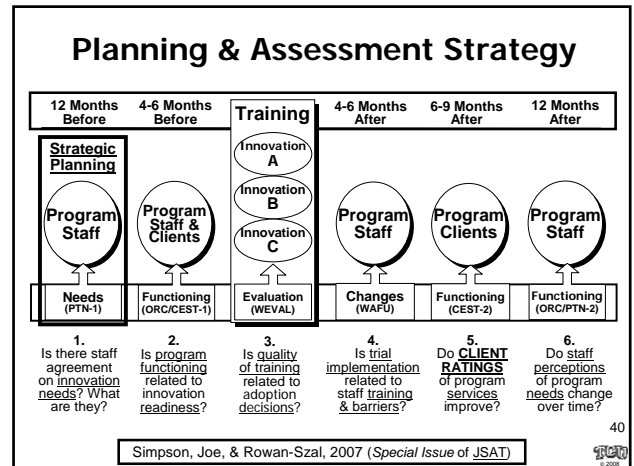
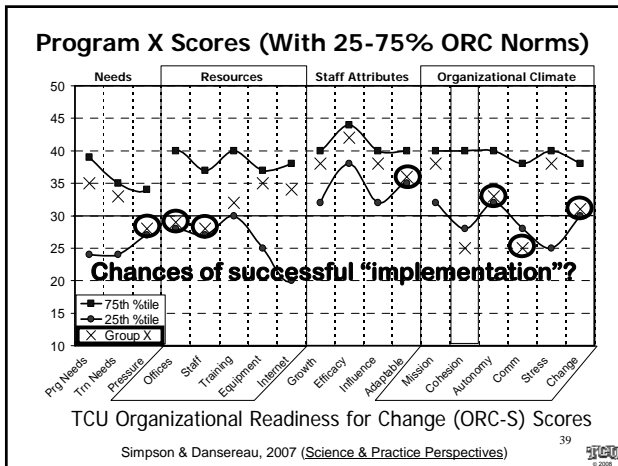
- Growth
- Efficacy
- Influence
- Adaptability

**Climate:**

- Mission
- Cohesion
- Autonomy
- Communication
- Stress
- Change



Simpson, 2002; Lehman et al, 2002 ; Simpson & Flynn, 2007 (JSAT)



### Reviewing Costs for Implementation

1.  
Training

2.  
Adoption

3.  
Implement-  
ation

4.  
Practice

**A. "Expenses" for Training, Supplies, & Procedures?**

a. Purchase price	a. Equipment	a. Supplies	a. Maintenance
b. Trainers	b. Boosters	b. Staff turnover	b. Training new staff
c. Facility capacity	c. Record-keeping	c. Tracking system	c. MIS/EBP monitoring
d. Certifications	d. Fidelity checks	d. EBP adherence	d. Staff credentials

**B. "Benefits" of Innovation Planning & Delivery?**

a. Program needs	a. Focus/mission	a. Communications	a. Cohesion of staff
b. Staff attributes	b. Influence	b. Growth/change	b. Personal autonomy
c. Client services	c. Needs-based	c. Engagement	c. Outcomes
d. Future funding	d. EBP-oriented	d. EBP-competent	d. "Evidence-based"

43

Simpson & Flynn, 2007 (Special Issue of JSAT); Flynn & Broome (in prep)

**Texas Institute of Behavioral Research**  
 at Texas Christian University

IBR HOME PAGE

MANUALS  
FORMS  
EVIDENCE

ABOUT IBR-TCU  
STAFF  
PUBLICATIONS  
PRESENTATIONS  
PROJECTS  
NEWSLETTERS

OTHER LINKS  
WHAT'S NEW

SITE GUIDES:

A National Research Center  
 for addiction treatment studies  
 in community and correctional settings  
 (over 400 free resource files available)

• Overviews of TCU Treatment System & Conceptual Models

• Guide for Selecting from 20 Intervention Manuals

• Guide for Selecting from 75 Assessment Forms

• Project Updates & Summaries

• New Publications (Abstracts), Presentations, Newsletters

**EVIDENCE**

SUMMARY

National Evaluations

Correctional Evaluations

Treatment Process

Counseling Manuals

Cognitive Interventions

Organizational Functioning

Assessment Systems

Assessment Fact Sheets

www.ibr.tcu.edu