



2008 National TC Conference
October 5-8 (Denver CO)

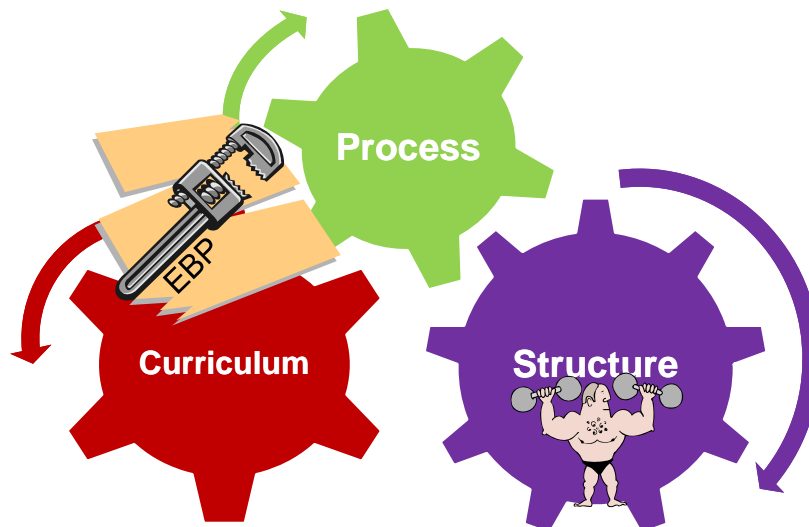
NIDA Plenary Session:
Criminal Justice Systems Issues
Facing TC Innovation Implementation

Raisin' TCs: Challenges to Change

Dwayne Simpson
Institute of Behavioral Research
Texas Christian University, Fort Worth

1

The "Cogs" of TC Programs



2

Raisin' TCs: Challenges to Change

NIDA Plenary Session: Criminal Justice Systems
Issues Facing TC Innovation Implementation

The "Weaker" Muscles



1. Process monitoring

- ✓ TC philosophy/fidelity
- ✓ Client needs/progress
- ✓ Retention/care planning

2. Counseling curriculum

- ✓ EBP/clinical techniques
- ✓ Integrated/adaptive manuals
- ✓ Systematic "feedback"

3. Re-entry protocol

- ✓ Risks/needs assessment
- ✓ Services coordination/hand-off
- ✓ Relapse management

3

Principles of Drug Abuse Treatment for Criminal Justice Populations:

A Research-Based Guide (2006)



National Institute on
Drug Abuse (NIDA)



Criminal Justice Drug Abuse Treatment Studies
A National Institute on Drug Abuse Research Center

Highlights

- Assessment is 1st step
- Tailor services to fit needs
- Engage/retain offender in TX
- Monitor progress in TX
- Balance rewards & sanctions
- Medications are part of TX
- Target criminality issues
- Mental health & HIV/HepC risks
- Plan for community re-entry
- **CJ/TX Systems integration**

4



Raisin' TCs: Challenges to Change

NIDA Plenary Session: Criminal Justice Systems

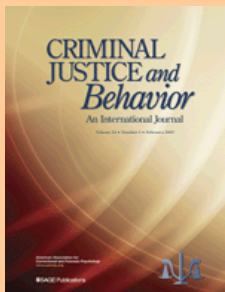
Issues Facing TC Innovation Implementation

Client Needs, Progress, and Engagement

Client Evaluation of Self & Treatment:

- Needs/Motivation/Readiness
- Psychosocial Functioning
- Treatment Engagement
- Criminal Thinking Orientation

CEST Scales
TCU



CAI Scales (NDRI)

Client Assessment Inventory:

- Developmental Competencies
- Socialization Competencies
- Emotional/Cognitive Competencies
- Program Involvement

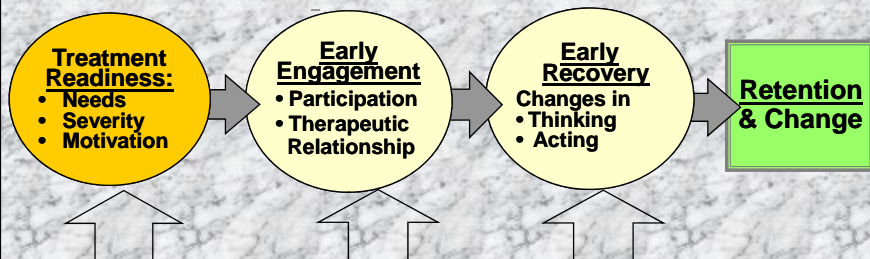
5

Simpson & Knight, 2007; Sacks, McKendrick, & Kressel, 2007 (*CJB*)



Assessing Client Needs and Progress During Treatment

Stages of Treatment



Intake Interview (eg, ASI)	Motivation (from CEST)	Engagement (from CEST)	Engagement (from CEST)
Short ID & Background Risk Info	Psychological (from CEST)	Psychological (from CEST)	Psychological (from CEST)
Fam/Friends Networks	Social (from CEST)	Social (from CEST)	Social (from CEST)
	Criminal Thinking(CTS)	Fam/Friends Networks	Criminal Thinking(CTS)

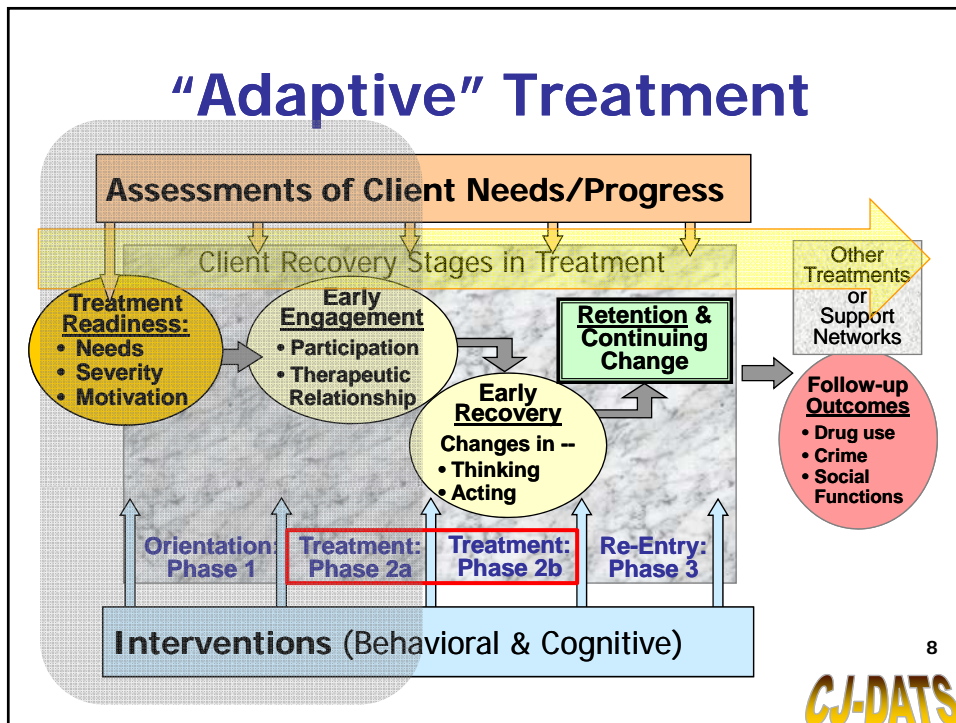
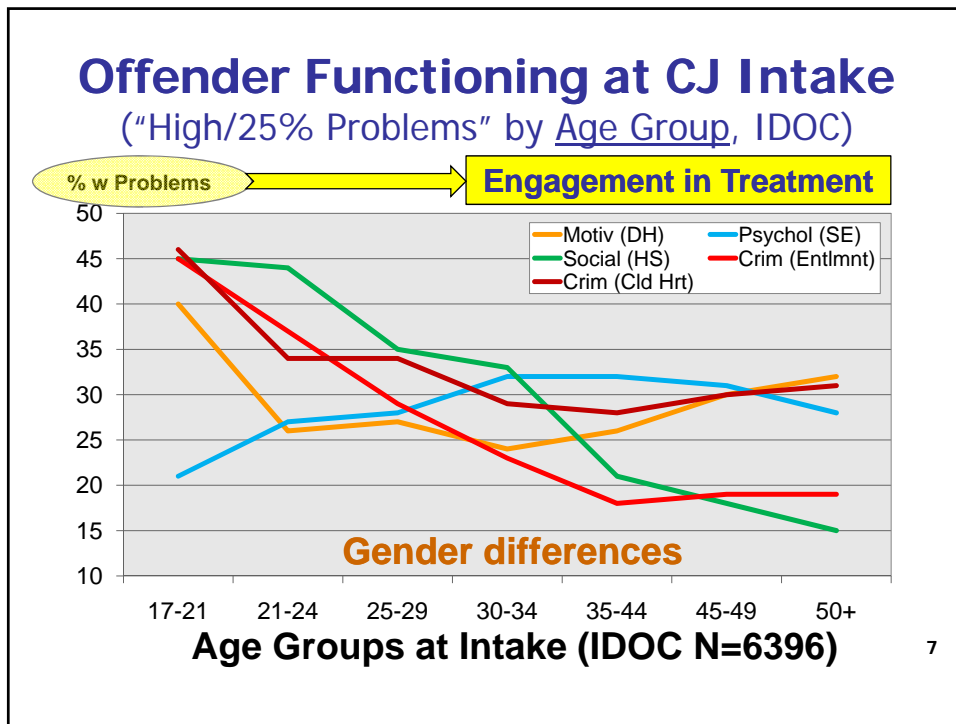


6

Raisin' TCs: Challenges to Change

NIDA Plenary Session: Criminal Justice Systems

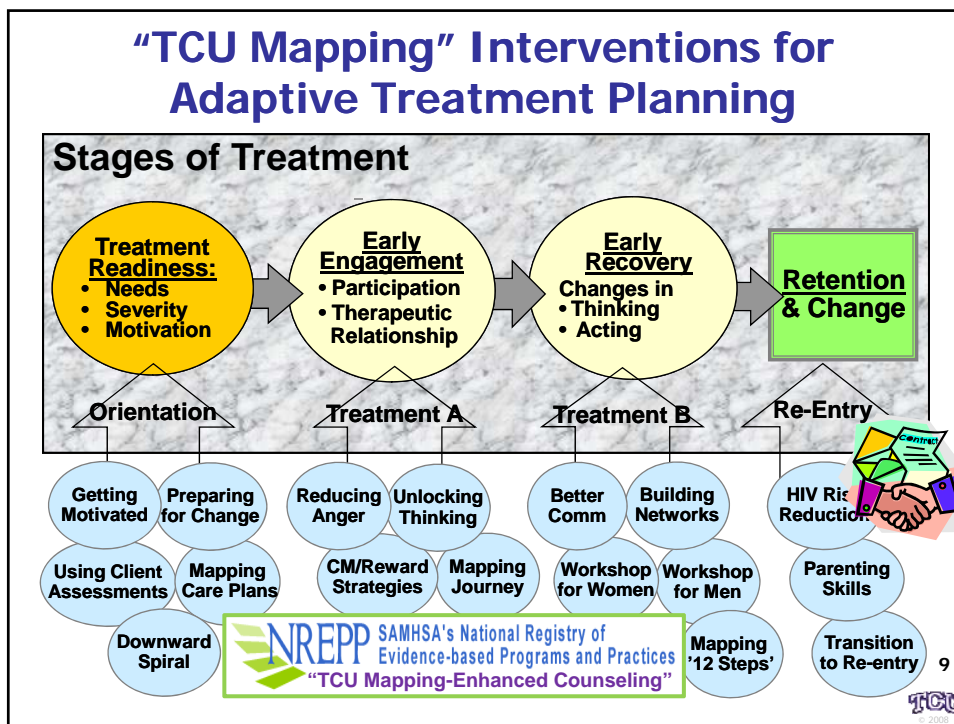
Issues Facing TC Innovation Implementation



Raisin' TCs: Challenges to Change

NIDA Plenary Session: Criminal Justice Systems

Issues Facing TC Innovation Implementation



Pre-Release Assessment

"Making the Transition to Aftercare"

- Risk evaluation for aftercare
- Needed for TX placements
- Brief & self-administered
- Focus on security risks & needs
 - Drug use severity & criminal history
 - Offender motivation & TX progress

10

UCLA Center (Farabee et al (2007))

CJ-DATS



Transitional Case Management

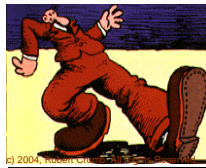
"Linking Community Services to Re-entry"

- Use Strengths Case Management
- Emphasize prison pre-release planning
- Guided by strengths & goals
- Address needs & barriers to recovery
 - Increase access, engagement, & retention
 - Reduce relapse & CJ system costs

11

UCLA Center (M. Prendergast, PI)

CJ-DATS



Step'n Out

"Catching People Doing Things Right"

- Coordinate TX with Parole Officer
- Emphasize social reinforcements
- Shape behavior, don't just "punish"
- Give attention to positive behavior
- Be fair & realistic about changes



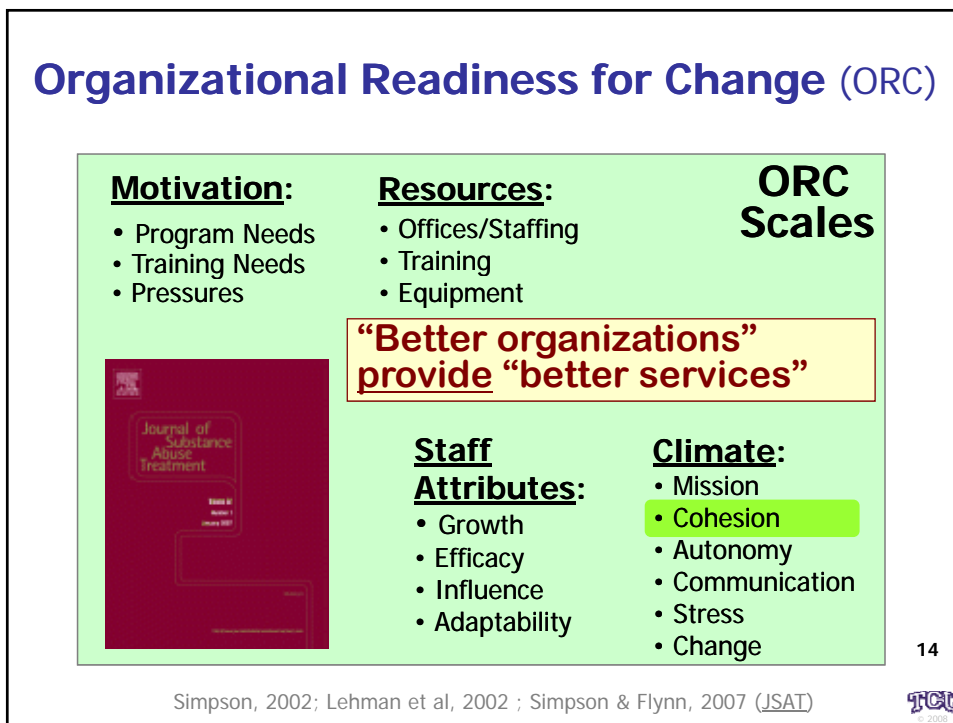
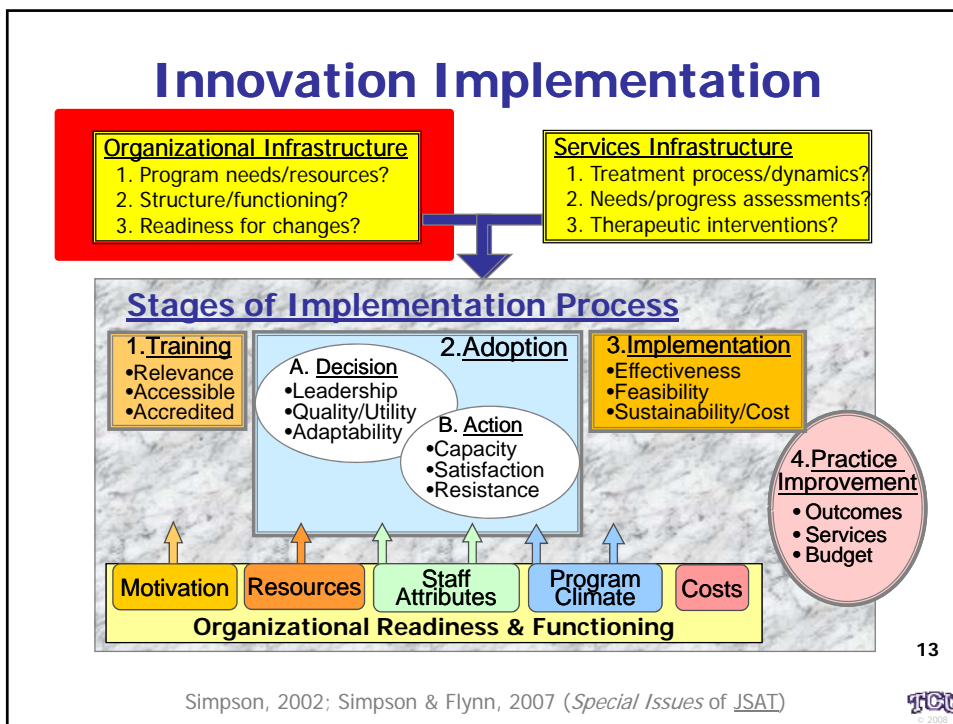
12

Rhode Island Center (P. Friedmann, PI)

CJ-DATS

Raisin' TCs: Challenges to Change

NIDA Plenary Session: Criminal Justice Systems
Issues Facing TC Innovation Implementation



Raisin' TCs: Challenges to Change

NIDA Plenary Session: Criminal Justice Systems

Issues Facing TC Innovation Implementation

